



2017 SIDE BY SIDE AND ATV

ACCESSORIES & ARCTICWEAR

EUROPE





4 WILDCAT

- 4 READY 2 ROLL PACKAGES
- 5 CABS
- 6 ROOFS
- 7 DOORS
- 8 REAR PANELS
- 9 WINDSHIELDS
- 11 BUMPERS
- 12 WINCHES
- 15 SKID PLATES & SIDE RAILS
- 16 FENDERS
- 17 INTERIOR
- 18 CARGO STORAGE
- 19 VEHICLE COVERS



21 WILDCAT SPORT WILDCAT TRAIL

- 21 READY 2 ROLL PACKAGES
- 22 CABS
- 23 ROOFS
- 24 DOORS
- 24 REAR PANELS
- 25 WINDSHIELDS
- 26 BUMPERS
- 27 WINCHES
- 29 PLOWS
- 30 PERFORMANCE
- 30 SKID PLATES & SIDE RAILS
- 32 INTERIOR
- 32 CARGO STORAGE
- 33 VEHICLE COVERS



36 PROWLER & HDX

- 36 READY 2 ROLL PACKAGES
- 40 CABS
- 42 ROOFS
- 43 REAR PANELS
- 43 WINDSHIELDS
- 45 BUMPERS
- 46 WINCHES
- 49 PLOWS
- 51 INTERIOR
- 51 SOFT GOODS
- 52 BODY & FRAME
- 53 ACCESSORIES
- 55 TIGERTRAX



58 ATV

- 58 READY 2 ROLL PACKAGES
- 60 WINDSHIELDS
- 61 HAND GUARDS
- 61 MIRRORS
- 62 BUMPERS
- 64 PLOWS
- 69 WINCHES
- 71 BODY & FRAME
- 72 UNDERBODY
- 72 RACKS
- 76 COVERS
- 76 CARGO BAGS
- 78 HUNTING
- 80 COLD-WEATHER GEAR
- 81 TRV
- 82 TIGERTRAX
- 82 SPRAYERS

YOUR CAT WAS BUILT TO TAKE ON THE WORLD. NOW EQUIP IT TO CONQUER YOURS.

You don't just want a machine. You want a machine that helps you master *your* world. No one gives you everything you need to personalize your offroad experience like Arctic Cat®. Want to deck out your ride? It's here. Want to deck out yourself? That's here, too. So go ahead, flip through the pages. And start making your Arctic Cat *your* Arctic Cat.



86 UNIVERSAL

- 86 LIGHTING
- 89 STEREO
- 90 UNIVERSAL FITMENT
- 91 WHEEL & TIRE PACKAGES
- 91 WHEELS
- 93 TIRES
- 94 ACCESSORIES
- 96 BATTERY CHARGERS
- 98 OIL & CARE



105 RIDE GEAR & SPORTSWEAR

- 105 PROCAT RIDING GEAR
- 105 HELMETS
- 106 GOGGLES
- 106 PROTECTIVE GEAR
- 107 LEATHER JACKETS
- 107 GEAR BAGS
- 109 CAPS
- 110 COLLECTIBLES

CONTENTS

- 4 READY 2 ROLL PACKAGES
- 5 CABS
- 6 ROOFS
- 7 DOORS
- 8 REAR PANELS
- 9 WINDSHIELDS
- 11 BUMPERS
- 12 WINCHES
- 15 SKID PLATES & SIDE RAILS
- 16 FENDERS
- 17 INTERIOR
- 18 CARGO STORAGE
- 19 VEHICLE COVER

NEW FOR 2017



KICKER / SSV WORKS AUDIO PACKAGE — pg 90

MAKE IT YOURS. MAKE IT SCREAM.



ALUMINUM REAR BUMPER pg 11



FRONT FENDERS pg 16



ALUMINUM DOORS pg 8



LIGHT BAR MOUNT pg 7, 88
FIREBAR 18 pg 86



REAR FENDER FLARES pg 17
SPARE TIRE CARRIER pg 19

WILDCAT

CARBON CAT PRO MX HELMET pg 105

ALUMINUM ROOF, MATTE BLACK pg 6

FLIP-UP WINDSHIELD pg 7

ALUMINUM FRONT BUMPER pg 11



WILDCAT X



STEREO-READY HARD TOP ROOF (1436-753) pg 6

FLIP-UP WINDSHIELD (1436-739) pg 10

SHOULDER BAG (1436-770) pg 18

ALUMINUM BUMPER — REAR (1436-685) pg 11

FRONT WINCH MOUNT (1436-692) pg 12

BRUSHED ALUMINUM BUMPER FOR FRONT WINCH MOUNT (1436-695) pg 13

5,000-LB. PROVANTAGE WINCH KIT (2436-107) pg 12

WILDCAT X DECKED OUT PACKAGE

BULKY ITEM - ASK FOR LEAD TIME
NOT MOUNTABLE ON HOMOLOGATED UNITS
2436-563 '13-'16 WILDCAT



ALUMINUM ROOF — MATTE BLACK (1436-910) pg 6

FLIP-UP WINDSHIELD (1436-739) pg 10

SHOULDER BAG (1436-770) pg 18

ALUMINUM REAR BUMPER — MATTE BLACK (1436-898) pg 11

ALUMINUM FRONT BUMPER — MATTE BLACK (1436-894) pg 11

WILDCAT X GEARED UP PACKAGE

BULKY ITEM - ASK FOR LEAD TIME
NOT MOUNTABLE ON HOMOLOGATED UNITS
2436-231 '13-'16 WILDCAT

CABS

SOFT CAB ENCLOSURE

- 9-oz. heavy series 70 Surlast™ fabric provides high UV resistance and protection from nature's elements
- Includes Soft-Top Roof with Back Panel (1436-674) and Door Kit (1436-675)
- Roof slides into WindLock™ channel that is mounted directly to the windshield, forming a complete seal (windshield required)
- Choose your windshield: Full (1436-734), Flip-up (1436-739) or Glass Flip-up (1436-661); sold separately
- Not compatible with aluminum or limited model half-doors



1436-676

*13-*17 WILDCAT 4 MODELS (EXCLUDES LIMITED MODELS)

1436-831

*12-*16 WILDCAT MODELS (EXCLUDES LIMITED MODELS)

SOFT-TOP ROOF WITH ROLL-UP BACK PANEL

- 9-oz. heavy series 70 Surlast fabric provides high UV resistance and protection from nature's elements
- Roof slides into WindLock channel that is mounted directly to the windshield, forming a complete seal (windshield required)
- Lightweight aluminum roof frame is designed to work with the doors to create an enclosed cab area
- Integrated back panel rolls up when not in use for added airflow
- Provides access to the whip flag mount
- Choose your windshield: Full (1436-734), Flip-up (1436-739) or Glass Flip-up (1436-661); sold separately



1436-674

*13-*17 WILDCAT 4 MODELS

1436-830

*12-*16 WILDCAT MODELS

SOFT DOOR KIT

- 9-oz. heavy series 70 Surlast fabric provides high UV resistance and protection from nature's elements
- Aluminum tube frame provides lightweight, durable construction
- Windows unzip, roll down and stay secured with Velcro® for increased airflow
- Mounts directly to stock quarter-doors for ease of installation
- 1436-961 doors are also compatible with Hard Top (1436-753) and Roof Extension (1436-672) installed
- Not compatible with aluminum or limited model half-doors



1436-961

*12-*16 WILDCAT MODELS (EXCLUDES LIMITED MODELS)



1436-675

*13-*17 WILDCAT 4 MODELS (EXCLUDES LIMITED MODELS)

WILDCAT

PACKAGES

CABS

ROOFS

DOORS

REAR PANELS

WINDSHIELDS

BUMPERS

WINCHES

SKID PLATES &
SIDE RAILS

FENDERS

INTERIOR

CARGO STORAGE

VEHICLE COVERS

ROOFS *

* BULKY ITEMS ARE NOT ON STOCK - PLEASE ASK FOR LEAD TIME

BIMINI TOP *

- Reduces exposure to the sun
- Easily tightens with strap adjustment
- 9-oz. heavy series 70 Surlast fabric
- Access to the whip flag mount



1436-731
'12-'16 WILDCAT MODELS



1436-673
'13-'17 WILDCAT 4 MODELS

2436-421
'17 WILDCAT MODELS

MOLDED POLY ROOF *

- Durable polyethylene construction provides overhead coverage from the elements and reduces exposure to sun
- Textured surface prevents scratching
- Removable plug provides easy installation of whip flag
- Quarter-turn attachment system mounts roof directly to ROPS tubing for easy installation and removal
- Auxiliary Mounting Kit included



2436-339
'12-'16 WILDCAT MODELS

2436-419
'17 WILDCAT MODELS



2436-340
'13-'17 WILDCAT 4 MODELS

ALUMINUM ROOF

- Lightweight aluminum construction
- Formed rear wing and visor overhang
- Installs easily and includes whip flag mounting location
- Accommodates installation of light bars (see Universal section for Firebar™ accessory light bars)



1436-698 ANODIZED SILVER
'12-'16 WILDCAT MODELS



1436-910 MATTE BLACK
'13-'16 WILDCAT MODELS

2436-410
'17 WILDCAT MODELS

STEREO-READY HARD TOP ROOF *

- Stylish hard top features a finished interior and is equipped with mounting locations for a stereo and four 4-in. speakers (stereo and speakers sold separately)
- Features tinted sunroofs and integrated rain runoff channels for superior coverage from the elements
- Accommodates Light Bar Mount (1436-724)
- Easy installation to ROPS tubing with molded clamps



1436-753
'12-'16 WILDCAT & '13-'17 WILDCAT 4 MODELS (FRONT SECTION)

HARD TOP REAR EXTENSION *

- Combine the Stereo-Ready Hard Top Roof (1436-753) with this rear extension for a complete roof system and the perfect coverage on your Wildcat™ 4
- Features integrated rain runoff channels on each side to let water flow out the back
- Finished interior
- Shown with Light Bar Mount (1436-724) and Firebar 18 light bar (1436-858), sold separately



1436-672
*13-'17 WILDCAT 4 MODELS (REAR)

LIGHT BAR MOUNT

- Lightweight cast and extruded aluminum construction
- Installs easily to roof or ROPS tubing
- Roof Mounting Blocks and ROPS Tube Clamps included
- Fits Arctic Cat Firebar LED light bars up to 23.5 in.; also fits light bars with lateral mounts up to 22 in. long
- Firebar LED light bars require Firebar to Light Support Transition Brackets (1436-908)
- NOTE: Use Anchor Block for Aluminum Light Support (2441-300) for extra light mounting locations



1436-724 ALUMINUM
ALL WILDCAT MODELS

KICKER / SSV WORKS AUDIO PACKAGE — STAGE 1

- All marine-grade components for superior weather resistance
- SSV Works Bluetooth audio controller with LCD display
- AM/FM, aux input and Bluetooth
- Integrated amplifier with six preset equalizer options
- Two 6.5-in. Kicker speakers with titanium dome tweeter
- Also includes enclosures, antenna and custom-fit wiring harness for Wildcat models
- Easy installation



2436-425
ALL WILDCAT 1000 & WILDCAT 4X MODELS

COMPLETE STEREO PACKAGE

- Developed for installation in a Stereo-Ready Hard Top Roof (1436-753)
- Includes Jensen® radio, four 4-in. JBL speakers, antenna and custom wiring



1436-838
FITS WILDCAT STEREO-READY HARD TOP (1436-753)

DOORS *

* BULKY ITEMS ARE NOT ON STOCK - PLEASE ASK FOR LEAD TIME

ALUMINUM FRONT DOORS

- Designed to increase your knee and elbow room
- The lightweight aluminum tube frame and skins provide excellent coverage
- Sealed edges help keep out dirt, sand and debris
- Easy bolt-on installation
- Includes driver and passenger doors



1436-890 ANODIZED SILVER
*12-'17 WILDCAT & WILDCAT 4 MODELS (FRONT)



1436-892 MATTE BLACK
*12-'17 WILDCAT & WILDCAT 4 MODELS (FRONT)

PACKAGES

CABS

ROOFS

DOORS

REAR PANELS

WINDSHIELDS

BUMPERS

WINCHES

SKID PLATES &
SIDE RAILS

FENDERS

INTERIOR

CARGO STORAGE

VEHICLE COVERS

ALUMINUM REAR DOORS



1436-890 FRONT
1436-891 REAR

1436-891 ANODIZED SILVER
'13-'17 WILDCAT 4 MODELS (REAR)



1436-892 FRONT
1436-893 REAR

1436-893 MATTE BLACK
'13-'17 WILDCAT 4 MODELS (REAR)

DOOR LINER WITH POCKET

- Soft-touch molded liner provides a finished look and adds function to your Wildcat Aluminum Doors
- Integrated pocket for trail essentials
- Easy on/off design for quick installation and removal for cleaning
- Includes driver and passenger door liners



2436-044
FITS ALUMINUM FRONT DOORS (1436-890 & 1436-892)

REAR PANELS

POLYCARBONATE REAR PANEL

- Shatter-resistant polycarbonate construction
- Dual vents control vehicle airflow
- Provides a clear field of view
- Works with a Bimini Top, Hard Top or Aluminum Roof



1436-825
'12-'16 WILDCAT MODELS

2436-420
'17 WILDCAT MODELS



1436-828
'13-'17 WILDCAT 4 MODELS

SOFT REAR PANEL

- Maximum visibility from a see-through design
- Significantly reduces dust swirl when used with a windshield
- Works with a Bimini Top, Hard Top or Aluminum Roof



1436-771
'12-'16 WILDCAT MODELS

2436-423
'17 WILDCAT MODELS



1436-839
'13-'17 WILDCAT 4 MODELS

BACK NET

- Offroad-inspired design
- Helps protect driver and passenger from cargo shifting in the rear box
- Open-weave design provides rear visibility



1436-723
'12-'17 WILDCAT MODELS

WINDSHIELDS *

* BULKY ITEMS ARE NOT ON STOCK - PLEASE ASK FOR LEAD TIME

FULL POLYCARBONATE WINDSHIELD *

- Scratch- and abrasion-resistant polycarbonate
- Eight-point mounting
- Works with Soft Cab, Bimini Top, Hard Top or Aluminum Roof



1436-734
'12-'16 WILDCAT & WILDCAT 4 MODELS

2436-422
'17 WILDCAT MODELS

FULL FLIP-UP GLASS WINDSHIELD *

- Features laminated automotive glass
- Easy opening with lift-assist shocks
- To control passenger comfort, the windshield may be used in three different positions
- Optional Windshield Wiper Kit (1436-841)
- Not compatible with Molded Poly Roof (2436-339 or 2436-340)



FULLY CLOSED POSITION



1436-661
'12-'17 WILDCAT & WILDCAT 4 MODELS

MANUAL WINDSHIELD WIPER

- 11-in. wiper blade length
- Arm length adjusts from 8 to 12 in.



1436-582
UNIVERSAL

MOTORIZED WINDSHIELD WIPER KIT

- Full range of rotation clears both driver and passenger sides
- Kit includes wiper, motor, custom wiring harness and switch



1436-841
FITS FULL GLASS FLIP-UP WINDSHIELD (1436-661)

PACKAGES

CABS

ROOFS

DOORS

REAR PANELS

WINDSHIELDS

BUMPERS

WINCHES

SKID PLATES &
SIDE RAILS

FENDERS

INTERIOR

CARGO STORAGE

VEHICLE COVERS

WINDSHIELD WASHER KIT

- Kit includes a half-gallon tank with electric pump, on/off switch with wiring harness, all hoses, fittings, mounting brackets and hardware
- Updated mounting location for easier filling
- Works with Windshield Wiper Kit (1436-841) and Glass Flip-up Windshield (1436-661)



1436-843
'12-'17 WILDCAT & WILDCAT 4 MODELS

FLIP-UP WINDSHIELD *

- Featuring a split-windshield design with adjustable upper portion to increase airflow
- Upper windshield is composed of scratch- and abrasion-resistant polycarbonate
- Flip-up Windshield is held open with two lift-assist shocks and can be driven in three positions: closed, partially open or fully open
- Not compatible with Molded Poly Roof (2436-339 or 2436-340)



1436-739
'12-'16 WILDCAT MODELS; '13-'17 WILDCAT 4 MODELS

HALF WINDSHIELD & WINDSCREEN

- Choose the windshield that perfectly matches your riding style
- The Windscreen stylishly protects hands and chest from flying dirt and debris
- Half Windshield offers greater protection with aerodynamic styling



HALF WINDSHIELD *

- Aerodynamic styling helps divert wind over driver and passenger
- Designed to reduce dust in the cab area
- Snap clamps offer quick installation or removal



1436-740
'12-'16 WILDCAT & WILDCAT 4 MODELS

2436-424
'17 WILDCAT MODELS

WINDSCREEN

- Low and stylish windscreen diverts airflow for added comfort



1436-826
'12-'17 WILDCAT & WILDCAT 4 MODELS

BUMPERS *

* NOT MOUNTABLE ON HOMOLOGATED WILDCATS
USE BUMPERS ONLY OFF-ROAD

ALUMINUM FRONT BUMPERS

- Lightweight aluminum construction
- Race-inspired design
- Complements Aluminum Side Rails (1436-904)



1436-684 BRUSHED ALUMINUM
*12-'17 WILDCAT & WILDCAT 4 MODELS



1436-894 MATTE BLACK
*12-'17 WILDCAT & WILDCAT 4 MODELS



1436-895 ORANGE METALLIC
*12-'17 WILDCAT & WILDCAT 4 MODELS



1436-896 TEAM ARCTIC GREEN
*12-'17 WILDCAT & WILDCAT 4 MODELS

ALUMINUM BUMPER – REAR

- Lightweight aluminum construction
- Bumper style complements Aluminum Side Rails (1436-904)



1436-685 BRUSHED ALUMINUM
*12-'17 WILDCAT & WILDCAT 4 MODELS



1436-898 MATTE BLACK
*12-'17 WILDCAT & WILDCAT 4 MODELS



1436-899 ORANGE METALLIC
*12-'17 WILDCAT & WILDCAT 4 MODELS



1436-900 TEAM ARCTIC GREEN
*12-'17 WILDCAT & WILDCAT 4 MODELS

STEEL BRUSHGUARD BUMPER – FRONT

- Durable 1.25-in. steel tube construction protects the vehicle body and lights from brush and debris
- Front bumper features an integrated mini skid plate
- Bumper style complements Steel Side Rails (1436-902)



1436-686 BLACK
*12-'17 WILDCAT & WILDCAT 4 MODELS

WILDCAT

PACKAGES

CABS

ROOFS

DOORS

REAR PANELS

WINDSHIELDS

BUMPERS

WINCHES

SKID PLATES &
SIDE RAILS

FENDERS

INTERIOR

CARGO STORAGE

VEHICLE COVERS

STEEL BRUSHGUARD BUMPER – REAR

- Durable 1.25-in. steel tube construction protects the vehicle body and lights from brush and debris
- Bumper style complements Steel Side Rails (1436-902)
- Complements Steel Front Brushguard Bumper (1436-686)



1436-832 BLACK
 '12-'17 WILDCAT & WILDCAT 4 MODELS

WINCHES *

* NOT MOUNTABLE ON HOMOLOGATED WILDCATS

Our winches are designed to help you make the most of your machine. In fact, we pair our winches and machines to create the perfect match for the performance, durability and reliability you need. All Wildcat winches share these common features:

- Arctic Cat/WARN® designed and engineered
- Custom-fit wire harnesses and connections
- All-metal gear end housing and mechanical brake
- Continuous backlit illuminated rocker switch for night use
- Remote-ready wiring harness for optional remote upgrade kits

5,000-LB. PROVANTAGE WINCH KIT

- Includes 55 ft. of durable wire cable
- Powerful permanent magnet motor with 5,000 lbs. of pulling capacity
- Plow roller fairlead with larger diameter bottom roller for less stress on wire cable



2436-107
 '12-'17 WILDCAT & WILDCAT 4 MODELS

5,000-LB. PROVANTAGE WINCH KIT WITH SYNTHETIC ROPE

- Includes 50 ft. of market-leading 7/32-in. Spydura™ synthetic rope
- Powerful permanent magnet motor with 5,000 lbs. of pulling capacity
- Double-coated Hawse Fairlead reduces rope wear and is corrosion resistant



2436-108
 '12-'17 WILDCAT & WILDCAT 4 MODELS

BUILD YOUR WINCH SYSTEM HERE

DIRECT MOUNT | MULTI-MOUNT | GUARD



FRONT WINCH MOUNT

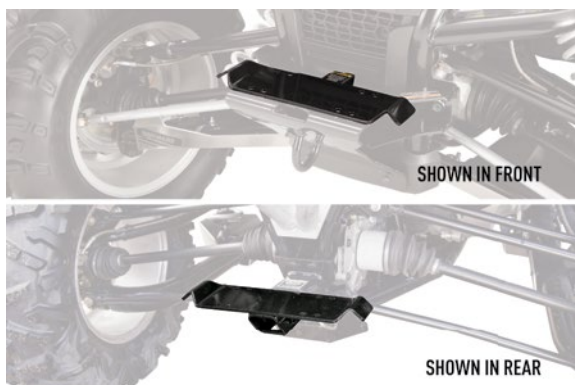
- Direct or multi-mount compatible
- Easy bolt-on installation
- Positions your winch in a convenient location
- Durable, high-strength powder-coated steel construction
- Winch can be fastened directly to this Winch Mount or to the Multi-Mount Winch Carrier for easy relocation to the Rear Winch Receiver (2436-139), sold separately



1436-692
 '12-'17 WILDCAT & WILDCAT 4 MODELS

MULTI-MOUNT WINCH CARRIER

- Winch fastens directly to the Winch Carrier for easy positioning on the vehicle
- Winch Carrier may be quickly repositioned to the front or rear of the vehicle using the Front Winch Mount (1436-692) or Rear Winch Receiver (2436-139)



2436-133 5,000-LB. WINCH
 '12-'17 WILDCAT & WILDCAT 4 MODELS

REAR WINCH RECEIVER

- Provides mounting for Multi-Mount Winch Carrier (2436-133)
- Steel plate construction
- Integrated scrub plate
- Not for towing and will not work with any 2-in. receiver hitch



2436-139 5,000-LB. WINCH
 '12-'17 WILDCAT & WILDCAT 4 MODELS

5,000-LB. REAR WINCH RECEIVER UPGRADE KIT

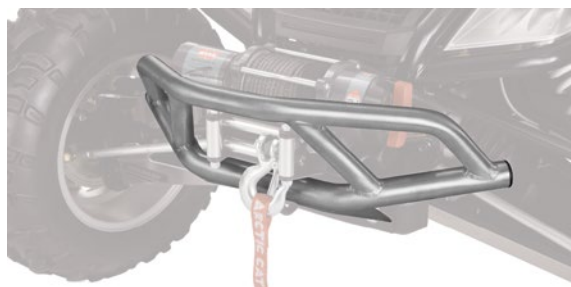
- Upgrade your existing 4,000-lb. Rear Winch Receiver (1436-741) to accommodate winches with capacity up to 5,000 lbs.



3441-065
 '12-'17 WILDCAT & WILDCAT 4 MODELS

BRUSHED ALUMINUM BUMPER FOR FRONT WINCH MOUNT

- Installs quickly and directly to the required Front Winch Mount (1436-692)
- Provides protection for your winch and Front Winch Mount
- Lightweight aluminum adds an extra level of style



1436-695 ALUMINUM
 '12-'17 WILDCAT & WILDCAT 4 MODELS

STEEL BUMPER FOR FRONT WINCH MOUNT

- Installs quickly and directly to the required Front Winch Mount (1436-692)
- Provides protection and style for your winch and Front Winch Mount
- Durable, high-strength powder-coated steel construction



1436-694 BLACK
 '12-'17 WILDCAT & WILDCAT 4 MODELS

MULTI-MOUNT WINCH HARNESS

- Winch fastens directly to the Winch Carrier for easy positioning on the vehicle
- Winch Carrier may be quickly repositioned to the front or rear of the vehicle using the Front Winch Mount (1436-692) or Rear Winch Receiver (2436-139)



2436-109
 '12-'17 WILDCAT & WILDCAT 4 MODELS

PACKAGES

CABS

ROOFS

DOORS

REAR PANELS

WINDSHIELDS

BUMPERS

WINCHES

SKID PLATES &
SIDE RAILS

FENDERS

INTERIOR

CARGO STORAGE

VEHICLE COVERS

WILDCAT 4 EXTENSION FOR MULTI-MOUNT WINCH HARNESS

- Extends the rear connect plug on the multi-mount ready winch kits to accommodate the Wildcat 4



1436-697
'13-'17 WILDCAT 4 MODELS

WIRELESS REMOTE UPGRADE KIT

- Works with all Arctic Cat/WARN ProVantage™ Winch Kits
- Easy plug-and-play installation
- 50-ft. operation radius
- Automatic system shut-off



2436-110
ALL ARCTIC CAT/WARN PROVANTAGE WINCH KITS

CORDED REMOTE UPGRADE KIT

- Works with all Arctic Cat/WARN ProVantage Winch Kits
- Easy plug-and-play installation
- Includes remote control with 10 ft. of cord, storage bag, socket and wiring



2436-114
ALL ARCTIC CAT/WARN PROVANTAGE WINCH KITS

STANDARD ROLLER FAIRLEAD



2441-933
'12-'17 WILDCAT & WILDCAT 4 MODELS; '15-'16 PROWLER; '16 HDX

HAWSE FAIRLEAD

- Double-coated Hawse Fairlead reduces rope wear and is corrosion resistant



2441-935
'12-'17 WILDCAT & WILDCAT 4 MODELS; '15-'16 PROWLER; '16 HDX

HITCH LOCK

- Durable hardened steel with black finish and quarter-turn lock
- Tubular key won't bend, cannot be false-locked
- Dust cap included
- Ideal for locking your Winch Carrier to the Front Winch Mount



1436-855
5/8-IN. PIN FITS 2-IN. X 2-IN. RECEIVERS

WINCH ACCESSORIES KIT

- Doubles the power of your winch with the handy pulley block
- Two clevis shackles provide secure rigging
- Includes two sturdy 7,000-lb. tow straps
- Packs conveniently into the rugged Cordura® nylon case



1436-600
UNIVERSAL

ROV SYNTHETIC WINCH ROPE

- Rope does not burr like steel cable
- Increased strength over steel cable
- Better fatigue resistance than steel cable



2441-113
USE WITH 4,000-LB. & 5,000-LB. WINCHES

SKID PLATES & SIDE RAILS

SKID PLATES – HMWPE

- High-molecular-weight polyethylene provides superior impact resistance and allows you to glide over obstacles
- Wraparound design protects rocker panels and floorboard
- Replaceable 0.5-in.-thick UHMWPE rear scrub plate protects the frame from impacts
- Access holes for maintenance and drainage



1436-662
'12-'17 WILDCAT MODELS



1436-677
'13-'17 WILDCAT 4 MODELS

FRONT A-ARM GUARDS – HMWPE

- Provide additional protection to CV boot and steering arm
- Rugged 0.25-in.-thick polyethylene material
- Large drainage holes to reduce buildup



1436-663
'12-'17 WILDCAT & WILDCAT 4 MODELS

ALUMINUM FRONT & REAR A-ARM GUARDS

- 10-gauge aluminum helps protect suspension and drivetrain
- Premium smooth grain anodized finish complements other aluminum accessories
- Quick and easy installation



1436-926 FRONT



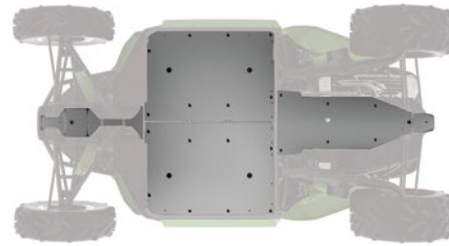
1436-927 REAR

1436-926 FRONT
'12-'17 WILDCAT & WILDCAT 4 MODELS

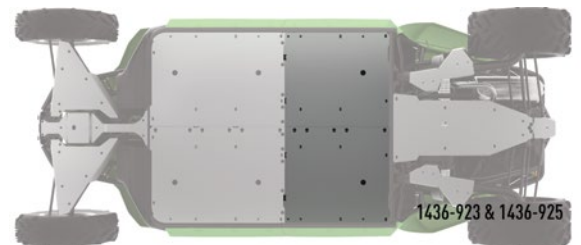
1436-927 REAR
'12-'16 WILDCAT MODELS; '13-'17 WILDCAT 4 MODELS

ALUMINUM SKID PLATES & EXTENSION

- Provides full underbody coverage to help protect the frame and components
- Replaces stock skid plates with these 0.125-in.-thick aluminum skid plates
- Access holes for maintenance and drainage
- Premium smooth grain anodized finish
- A-arm guards not included
- For additional protection on your Wildcat 4, the Wildcat Skid Plate Extension Kit (1436-925) is required



1436-923 WILDCAT SKID PLATE
'12-'17 WILDCAT; '13-'17 WILDCAT 4 (FRONT)



1436-925 WILDCAT 4 SKID PLATE EXTENSION
'13-'17 WILDCAT 4 MODELS

PACKAGES

CABS

ROOFS

DOORS

REAR PANELS

WINDSHIELDS

BUMPERS

WINCHES

SKID PLATES &
SIDE RAILS

FENDERS

INTERIOR

CARGO STORAGE

VEHICLE COVERS

ALUMINUM SIDE GUARDS & EXTENSIONS

- Helps protect rocker panels
- 10-gauge aluminum construction
- Installs with or without Aluminum Skid Plate
- Premium smooth grain anodized finish complements other aluminum accessories
- Side Guard Extensions (1436-924) are required for added protection on your Wildcat 4
- Not compatible with Side Rails



1436-922 WILDCAT SIDE GUARDS

'12-'17 WILDCAT & WILDCAT 4 MODELS (FRONT)



1436-922 & 1436-924

1436-924 WILDCAT 4 SIDE GUARD EXTENSIONS

'13-'17 WILDCAT 4 MODELS (REAR)

ALUMINUM SIDE RAILS

- Added protection for the side of your vehicle
- Flush mount installation maintains vehicle ground clearance
- Rugged and lightweight tubular aluminum frame
- Designed to complement Wildcat Aluminum Bumpers
- Also works on Wildcat 4 in conjunction with Side Rail Extensions (1436-905)



1436-904

'12-'17 WILDCAT & WILDCAT 4 MODELS (FRONT)

ALUMINUM SIDE RAIL EXTENSIONS

- Combine the Aluminum Side Rail (1436-904) with this extension for a full-length Wildcat 4 Side Rail
- Flush mount installation maintains vehicle ground clearance
- Rugged and lightweight tubular aluminum frame
- Designed to complement Wildcat Aluminum Bumpers
- Premium smooth grain anodized finish adds style and complements other aluminum accessories



1436-905

'13-'17 WILDCAT 4 MODELS (REAR)

STEEL SIDE RAILS

- For the ultimate side vehicle protection in extreme conditions
- Flush mount installation maintains vehicle ground clearance
- Rugged 1.25-in. steel tube construction
- Designed to complement Wildcat Steel Bumpers



1436-902

'12-'17 WILDCAT & WILDCAT 4 MODELS (REAR)

STEEL SIDE RAIL EXTENSIONS

- Combine the Steel Side Rail (1436-902) with this extension for a full-length Wildcat 4 Side Rail
- Flush mount installation maintains vehicle ground clearance
- Rugged 1.25-in. steel tube construction
- Styling integrates with Wildcat Steel Bumpers



1436-903

'12-'17 WILDCAT & WILDCAT 4 MODELS (FRONT)

FENDERS

FRONT FENDERS

- Unique suspension-mounted fenders offer full-coverage protection throughout the travel of the suspension
- Composed of premium, paintable TPO plastic
- Maintains flexibility in all weather conditions



1436-679

'12-'17 WILDCAT & WILDCAT 4 MODELS

REAR FENDER FLARES

- Rear fenders provide coverage for the rear and side of your vehicle to divert mud and debris from tires
- Uses premium, paintable TPO plastic
- Maintains flexibility in all weather conditions



1436-682
*12-*17 WILDCAT & WILDCAT 4 MODELS

FENDER MOUNT SIDE MIRROR

- Mounts to front fenders
- not e-marked
- Adjustable shaft for customized viewing



1436-765 LEFT HAND
*12-*17 WILDCAT & WILDCAT 4 MODELS



1436-824 RIGHT HAND
*12-*17 WILDCAT & WILDCAT 4 MODELS

INTERIOR

SUN VISOR

- Clamps to ROPS tubing
- Dark tint transparency allows full field of vision
- Ratchet system allows for easy adjustment into multiple positions
- Sold individually



2436-016
UNIVERSAL

PADDED ARMREST

- Closed-cell foam design for comfort
- Complements the interior of the vehicle
- Easy installation



1436-769
*12-*17 WILDCAT & WILDCAT 4 MODELS (FRONT)

SIDE BAR PAD – REAR

- Frame pads provide cushion to the outside knee for the passenger in the rear seat
- Includes left and right pads



1436-840
*13-*17 WILDCAT 4 MODELS

PACKAGES

CABS

ROOFS

DOORS

REAR PANELS

WINDSHIELDS

BUMPERS

WINCHES

SKID PLATES &
SIDE RAILS

FENDERS

INTERIOR

CARGO STORAGE

VEHICLE COVERS

PASSENGER GRIP HANDLE

- Add passenger stability for Wildcat models not equipped with factory-installed passenger handles
- Precut flange for passenger comfort
- Soft rubber grip



2436-052
ALL WILDCATS

CARGO STORAGE

OVERHEAD STORAGE BAG

- Provides easy-access overhead storage
- Includes map pocket



1436-735
'12-'16 WILDCAT MODELS; '13-'17 WILDCAT 4 MODELS

KICK PANEL BAGS

- Easy-access storage compartment is tucked out of the way under the door opening
- Rugged 1,000-denier construction
- Sold in pairs



1436-736
'12-'17 WILDCAT & WILDCAT 4 MODELS

SHOULDER BAG

- Secure, convenient, easy-access storage between the seats
- Easy bolt-on design for existing mounting points
- 1,000-denier coated nylon fabric with vinyl accent



1436-770
'12-'17 WILDCAT & WILDCAT 4 MODELS

TRUNK BAG

- Zipperless bag with dual-buckle closure
- Lightweight aluminum tube framework
- Top composed of heavy-duty 18-oz. PVC-coated polyester material



1436-737
'12-'17 WILDCAT & WILDCAT 4 MODELS

CARGO NET

- Versatile 15-in. x 30-in. net with coated steel hooks
- Secures cargo or other items through hook points integrated in the rear box



1436-717
UNIVERSAL

SPARE TIRE CARRIER

- Steel tube frame installs directly to rear ROPS tubing for integrated styling
- Aluminum carrier plate offers lightweight mounting for spare tire
- Accommodates front or rear wheels and tire
- NOTE: Side mirrors are recommended when Spare Tire Carrier is installed



1436-814

'13-'16 WILDCAT MODELS

1436-822

'13-'17 WILDCAT 4 MODELS

2436-418

'17 WILDCAT MODELS

FUEL CAN HOLDER

- Extend your traveling distance
- Box-rail mounting location frees up rear storage area and utilizes existing mounting holes
- Fits Scepter brand 10-liter/2.5-gallon fuel can (1436-952) with base dimensions of 11.25 in. x 7.75 in.
- Fuel can is not included



1436-854

'12-'17 WILDCAT & WILDCAT 4 MODELS

SCEPTER 2.5-GALLON FUEL CAN

- Lightweight, dent-resistant, rustproof, noncorroding polyethylene plastic contains an additive to combat permeation of fumes through can walls
- Includes child-resistant "spillproof" spout with automatic shut-off and overflow protection
- Meets or exceeds current U.S. and Canadian standards



1436-952

UNIVERSAL – FITS FUEL CAN HOLDER (1436-854)

VEHICLE COVERS

TRANSPORT/STORAGE COVER

- Protect your ride from nature's elements with a heavy-duty 600-denier Surlast fade-resistant polyester cover
- Interior lining protects plastic
- Features ratchet-and-buckle tensioning system
- Fits with Hard Top or Soft Cab installed



1436-738

'12-'17 WILDCAT MODELS

1436-671

'13-'17 WILDCAT 4 MODELS

- Available in factory colors to match most '12-'17 Wildcat models
- 12-oz. spray can
- See dealer for additional colors
- NOTE: Paint is for metal parts only and is not to be used on body panels

PACKAGES

CABS

ROOFS

DOORS

REAR PANELS

WINDSHIELDS

BUMPERS

WINCHES

SKID PLATES &
SIDE RAILS

FENDERS

INTERIOR

CARGO STORAGE

VEHICLE COVERS

CONTENTS

21	READY 2 ROLL PACKAGES
22	CABS
23	ROOFS
24	DOORS
24	REAR PANELS
25	WINDSHIELDS
26	BUMPERS
27	WINCHES
29	PLOWS
30	PERFORMANCE
30	SKID PLATES & SIDE RAILS
32	INTERIOR
32	CARGO STORAGE
33	VEHICLE COVERS

NEW FOR 2017



ROTOPAX FUEL CAN & MOUNTING KIT pg 33

NO MAPS. NO ROADS. NO LOOKING LIKE EVERYONE ELSE.



SOFT CAB pg 22



BIMINI TOP pg 23



ALUMINUM DOOR KIT pg 24



FENDER FLARES pg 31



ANGLE BARS pg 33
SPARE TIRE CARRIER pg 33
STEEL DELUXE REAR BUMPER pg 26



FIREBAR 9 pg 86
WINDSCREEN pg 25
STEEL DELUXE FRONT BUMPER pg 27

WILDCAT SPORT WILDCAT TRAIL

HARD TOP SPOILER pg 23

HARD TOP ROOF pg 23

FLIP-UP POLYCARBONATE WINDSHIELD pg 25

TEAM CAT REPLICA MX HELMET pg 105

ALUMINUM FRONT BUMPER pg 26

3,000-LB. PROVANTAGE WINCH KIT pg 27



CABS *

* BULKY ITEMS ARE NOT ON STOCK - PLEASE ASK FOR LEAD TIME

HARD CAB WITH SOFT DOORS

- Complete enclosure kit including Hard Top Roof (2436-400), Full Windshield (1436-988), Polycarbonate Rear Panel (1436-990), Soft Doors (2436-015) and Soft Door-to-Roof Seal Kit (2436-141)
- Not compatible on vehicles equipped with aluminum or limited model half-doors



2436-258

*14-'17 WILDCAT TRAIL & WILDCAT SPORT MODELS

SOFT CAB *

- Includes Soft Roof with Back Panel (1436-992), Soft Doors (2436-015) and Full Windshield (1436-188)
- WindLock Windshield System mounts directly to windshield for complete seal
- Zippered windows fold down to increase ventilation
- 9-oz. heavy series 70 Surlast fabric
- UV-resistant polyester material
- Door window unzips and rolls up for full ventilation
- Attaches to stock quarter-doors
- Not compatible on vehicles equipped with aluminum or limited model half-doors



2436-338

*14-'17 WILDCAT TRAIL & WILDCAT SPORT MODELS

SOFT DOORS *

- 9-oz. heavy series 70 Surlast fabric
- Windows unzip, roll down and stay secured with Velcro
- Doors fit with Soft Roof With Back Panel (1436-992) installed
- Doors also work with Hard Top (2436-400), Polycarbonate Rear Panel (1436-990) and Full Windshield (1436-988) with the addition of the Soft Door-to-Roof Seal Kit (2436-141)
- Not compatible on vehicles equipped with aluminum or limited model half-doors



2436-015

*14-'17 WILDCAT TRAIL & WILDCAT SPORT MODELS

DOOR-TO-ROOF SEAL KIT

- Seals top edge of Soft Doors (2436-015) to Hard Top Roof (2436-400)
- Uses pressure-sensitive, self-adhesive Velcro for easy installation



2436-141

*14-'17 WILDCAT TRAIL & WILDCAT SPORT MODELS

SOFT ROOF WITH BACK PANEL *

- 9-oz. heavy series 70 Surlast fabric provides high UV protection
- WindLock Windshield System mounts directly to windshield for complete seal
- Full Windshield (1436-988) required
- Roll-up back panel



1436-992

*14-'17 WILDCAT TRAIL & WILDCAT SPORT MODELS

ROOFS *

* BULKY ITEMS ARE NOT ON STOCK - PLEASE ASK FOR LEAD TIME

BIMINI TOP *

- 9-oz. heavy series 70 Surlast fabric provides high UV protection
- Works with all windshields and rear panels, allowing for customization with accessories



2436-000 BLACK

*14-'17 WILDCAT TRAIL & WILDCAT SPORT MODELS

PRINTED BIMINI TOP *

- 9-oz. heavy series 70 Surlast fabric provides high UV protection
- Works with all windshields and rear panels, allowing for customization with accessories
- Printed graphics match Trunk Bag (2436-028)



2436-163

*14-'17 WILDCAT TRAIL & WILDCAT SPORT MODELS

HARD TOP ROOF *

- Uses SpeedRatchet™ attachment system for fast installation or removal
- Injection-molded HDPE hard top provides durable protection
- Flat surface is ideal for custom decals
- Mounting bosses on interior side support addition of accessories
- Flag bracket included



2436-400

*14-'17 WILDCAT TRAIL & WILDCAT SPORT MODELS

HARD TOP SPOILER *

- Features paintable TPO plastic for a custom look



2436-037

FITS HARD TOP (2436-400)

ALUMINUM ROOF *

- Lightweight overhead protection
- Great for mounting lights
- Molded rubber access protectors add comfort and style
- Simple mounting hardware for easy installation
- Built-in whip flag mounting location



1436-974 ANODIZED SILVER

*14-'17 WILDCAT TRAIL & WILDCAT SPORT MODELS



2436-031 MATTE BLACK

*14-'17 WILDCAT TRAIL & WILDCAT SPORT MODELS

PACKAGES

CABS

ROOFS

DOORS

REAR PANELS

WINDSHIELDS

BUMPERS

WINCHES

PLOWS

PERFORMANCE

SKID PLATES & SIDE RAILS

INTERIOR

CARGO STORAGE

VEHICLE COVERS

DOORS *

* BULKY ITEMS ARE NOT ON STOCK - PLEASE ASK FOR LEAD TIME

ALUMINUM DOORS *

- Adds style and an extra layer of protection
- Aluminum skin and steel tube frame provide optimum weight and strength with a premium fit and finish
- Simple bolt-on installation takes just minutes
- Includes driver and passenger doors



1436-983 ANODIZED SILVER

'14-'17 WILDCAT TRAIL & WILDCAT SPORT MODELS

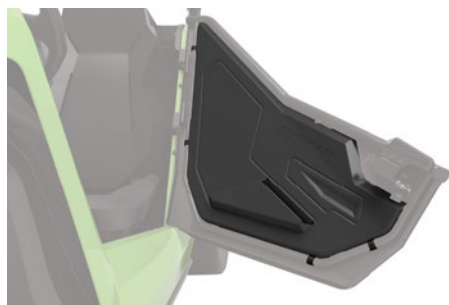


1436-984 MATTE BLACK

'14-'17 WILDCAT TRAIL & WILDCAT SPORT MODELS

DOOR LINER WITH POCKET *

- Soft-touch molded liners add style and protection to Wildcat Trail or Wildcat Sport Aluminum Doors
- Integrated pocket for trail essentials
- Easy on/off design provides quick cleaning and installation
- Includes driver and passenger door liners
- Fits Aluminum Doors (1436-983 and 1436-984)



2436-006

'14-'17 WILDCAT TRAIL & WILDCAT SPORT MODELS

DOOR EXTENSIONS *

- Keep the elements out by converting the stock quarter-door into a half-door
- Front and lower seal included for added protection against outside elements
- Easy bolt-on installation
- Sold in a pair



2436-142

'14-'17 WILDCAT TRAIL & WILDCAT SPORT MODELS

DOOR PAD

- Add shoulder padding on door
- Not compatible on vehicles equipped with aluminum or limited half-doors



2436-029

'14-'17 WILDCAT TRAIL & WILDCAT SPORT MODELS

REAR PANELS *

* BULKY ITEMS ARE NOT ON STOCK - PLEASE ASK FOR LEAD TIME

POLYCARBONATE REAR PANEL *

- Shatter-resistant polycarbonate rear panel provides a clear field of view
- Dual vents for controlled airflow
- Custom integrated trim seals tightly to ROPS and body panels
- Fits Aluminum Roof, Hard Top and Bimini Top
- SpeedRatchet clamping system for easy installation and removal



1436-990

'14-'17 WILDCAT TRAIL & WILDCAT SPORT MODELS

SOFT REAR PANEL *

- Huge, clear vinyl rear window provides maximum rearview visibility
- Works with Aluminum Roof, Hard Top or Bimini Top
- Reduces wraparound wind currents with a windshield installed



2436-030

*14-'17 WILDCAT TRAIL & WILDCAT SPORT MODELS

WINDSHIELDS *

* BULKY ITEMS ARE NOT ON STOCK - PLEASE ASK FOR LEAD TIME

FULL POLYCARBONATE WINDSHIELD *

- Durable, scratch-resistant clear polycarbonate
- Includes two lower panel vents and one upper center vent for airflow in the cab area
- Lower panel design allows easy underhood access
- Uses SpeedRatchet attachment system for fast installation or removal
- Works with Aluminum Roof, Bimini Top or Hard Top
- Included in Soft Cab Kit (2436-338)



1436-988

*14-'17 WILDCAT TRAIL & WILDCAT SPORT MODELS

FLIP-UP POLYCARBONATE WINDSHIELD *

- Scratch-resistant coating for a clear view
- Two gas-assist shocks hold in full open position
- Two lower panel vents provide airflow with windshield closed
- Three positions: fully open, partially open and closed



2436-162

*14-'17 WILDCAT TRAIL & WILDCAT SPORT MODELS

POLYCARBONATE HALF WINDSHIELD *

- Scratch-resistant polycarbonate provides an excellent field of view
- Lower panel venting design allows easy hood access
- Unique arched design improves airflow while reducing dust swirl



2436-017

*14-'17 WILDCAT TRAIL & WILDCAT SPORT MODELS

POLYCARBONATE WINDSCREEN *

- Low-profile windscreen diverts air from hand and chest area
- Installs in seconds with three quarter-turn fasteners



1436-989

*14-'17 WILDCAT TRAIL & WILDCAT SPORT MODELS

PACKAGES

CABS

ROOFS

DOORS

REAR PANELS

WINDSHIELDS

BUMPERS

WINCHES

PLOWS

PERFORMANCE

SKID PLATES &
SIDE RAILS

INTERIOR

CARGO STORAGE

VEHICLE COVERS

BUMPERS *

* NOT MOUNTABLE ON HOMOLOGATED PROWLERS
USE BUMPERS ONLY OFF-ROAD

ALUMINUM FRONT BUMPER *

- Sport-styled, lightweight aluminum construction
- Steel mounting brackets for added strength



1436-977 BRUSHED ALUMINUM
'14-'17 WILDCAT TRAIL & WILDCAT SPORT MODELS



2436-018 BLACK
'14-'17 WILDCAT TRAIL & WILDCAT SPORT MODELS



2436-020 TEAM ARCTIC GREEN
'14-'17 WILDCAT TRAIL & WILDCAT SPORT MODELS

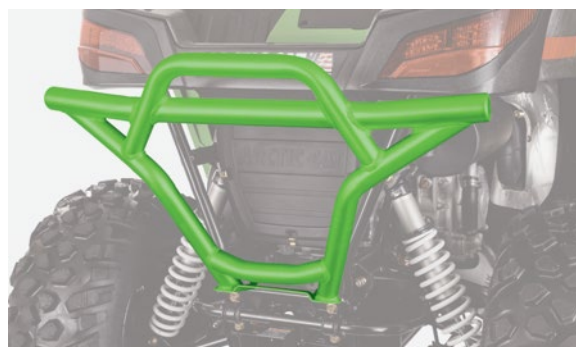
ALUMINUM REAR BUMPER *



1436-978 BRUSHED ALUMINUM
'14-'17 WILDCAT TRAIL & WILDCAT SPORT MODELS



2436-019 BLACK
'14-'17 WILDCAT TRAIL & WILDCAT SPORT MODELS



2436-021 TEAM ARCTIC GREEN
'14-'17 WILDCAT TRAIL & WILDCAT SPORT MODELS

FRONT BRUSHGUARD BUMPER *

- Durable 1.25-in. powder-coated steel protects from brush and debris
- Front bumper features a built-in mini skid plate that integrates with underbody
- Matches Wildcat Trail and Wildcat Sport accessories



1436-979 FRONT

*14-'17 WILDCAT TRAIL & WILDCAT SPORT MODELS

REAR BRUSHGUARD BUMPER *

- Durable 1.25-in. powder-coated steel protects from brush and debris
- Matches Wildcat Trail and Wildcat Sport accessories



1436-980 REAR

*14-'17 WILDCAT TRAIL & WILDCAT SPORT MODELS

WINCHES *

* NOT MOUNTABLE ON HOMOLOGATED WILDCATS

Our winches are designed to help you make the most of your machine. In fact, we pair our winches and machines to create the perfect match for the performance, durability and reliability you need. All Wildcat Trail and Wildcat Sport winches share these common features:

- Arctic Cat/WARN designed and engineered
- Custom-fit wire harnesses and connections
- All-metal gear end housing and mechanical brake
- Continuous backlit illuminated rocker switch for night use and plowing
- Remote-ready wiring harness for optional remote upgrade kits

3,000-LB. PROVANTAGE WINCH KIT *

- Includes 50 ft. of durable wire cable
- Powerful permanent magnet motor with 3,000 lbs. of pulling capacity
- Plow roller fairlead with larger diameter bottom roller for reduced stress to wire cable



2436-105

*14-'17 WILDCAT TRAIL & WILDCAT SPORT MODELS

3,000-LB. PROVANTAGE WINCH KIT WITH SYNTHETIC ROPE *

- Includes 50 ft. of market-leading 3/16-in. Spydura synthetic rope
- Powerful permanent magnet motor with 3,000 lbs. of pulling capacity
- Double-coated Hawse Fairlead reduces rope wear and improves corrosion resistance



2436-106

*14-'17 WILDCAT TRAIL & WILDCAT SPORT MODELS

PACKAGES

CABS

ROOFS

DOORS

REAR PANELS

WINDSHIELDS

BUMPERS

WINCHES

PLOWS

PERFORMANCE

SKID PLATES &
SIDE RAILS

INTERIOR

CARGO STORAGE

VEHICLE COVERS

WIRELESS REMOTE UPGRADE KIT – ALL VEHICLES

- Works with all Arctic Cat/WARN ProVantage Winch Kits
- Easy plug-and-play installation
- 50-ft. operation radius
- Automatic system shut-off



2436-110
ALL ARCTIC CAT/WARN PROVANTAGE WINCHES

CORDED REMOTE UPGRADE KIT – ALL VEHICLES

- Works with all Arctic Cat/WARN ProVantage Winch Kits
- Easy plug-and-play installation
- Includes remote control with 10 ft. of cord, storage bag, socket and wiring



2436-114
ALL ARCTIC CAT/WARN PROVANTAGE WINCHES

STANDARD ROLLER FAIRLEAD



0441-403
'14-'17 WILDCAT TRAIL & WILDCAT SPORT MODELS; '14 & OLDER PROWLERS; '11-'15 HDX; ALL ATVS

PLOW ROLLER FAIRLEAD

- Plow roller fairlead with larger diameter bottom roller for reduced rope stress



2441-931
'14-'17 WILDCAT TRAIL & WILDCAT SPORT MODELS; '14 & OLDER PROWLERS; '11-'15 HDX; ALL ATVS

HAWSE FAIRLEAD

- Double-coated Hawse Fairlead reduces rope wear and improves corrosion resistance



2441-932
'14-'17 WILDCAT TRAIL & WILDCAT SPORT MODELS; '14 & OLDER PROWLERS; '11-'15 HDX; ALL ATVS

WINCH ACCESSORIES KIT

- Doubles the power of your winch with the handy pulley block
- Two clevis shackles provide secure rigging
- Includes two sturdy 7,000-lb. tow straps
- Packs conveniently into the rugged Cordura nylon case



1436-600
UNIVERSAL

ROV SYNTHETIC WINCH ROPE

- Rope does not burr like steel cable
- Increased strength over steel cable
- Better fatigue resistance than steel cable



0436-962
USE WITH ALUMINUM DRUM ARCTIC CAT/WARN 2,500-LB. & 3,000-LB. WINCHES

PLOWS *

* BULKY ITEMS ARE NOT ON STOCK - PLEASE ASK FOR LEAD TIME

QUICK-ATTACH PLOW MOUNTING KIT *

- Includes frame and mount, with choice of blade style
- Durable, heavy-duty steel construction with five adjustable plow positions for increased versatility
- Attaches and detaches in just seconds
- Engineered exclusively for Arctic Cat Wildcat Trail models
- Requires Winch Kit and blade (sold separately)



2436-209

*14-*17 WILDCAT TRAIL MODELS

60-IN. TWO-WAY STEEL TAPERED PLOW BLADE *

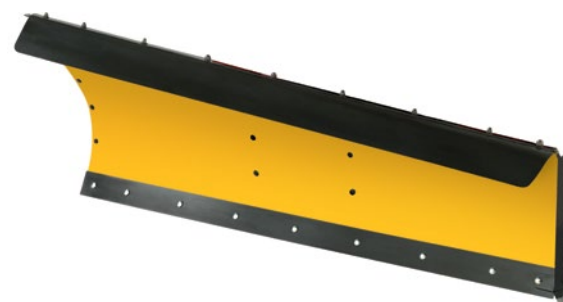
- Optimal right- or left-angled plow position performance from a two-way tapered blade
- Tough, high-strength steel construction with 3-in. serviceable wearbar and adjustable skid plates
- Wide 60-in. and 72-in. blades with 16-in. center height and standard snow deflector
- Throws snow farther with blade ends tapering out to 22-in. for increased snow handling
- Requires Plow Push Frame and Mount Kit
- Edge Markers sold separately (excludes SPEEDPlow)



1436-398 60-IN. BLADE - BLACK

ONE-WAY TAPERED PLOW BLADE *

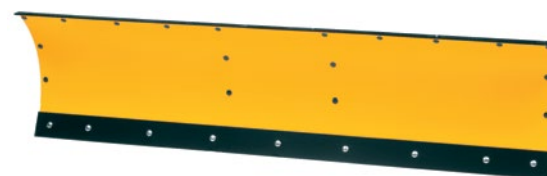
- Unique 16-in. to 26-in. tapered design launches snow up and away
- Deflector flap prevents snow from getting over the blade top
- End plate comes standard for increased snow handling
- Requires Plow Push Frame and Mount Kit (excludes SPEEDPlow)



0436-360 60-IN. BLADE - YELLOW

POLYETHYLENE PLOW BLADE *

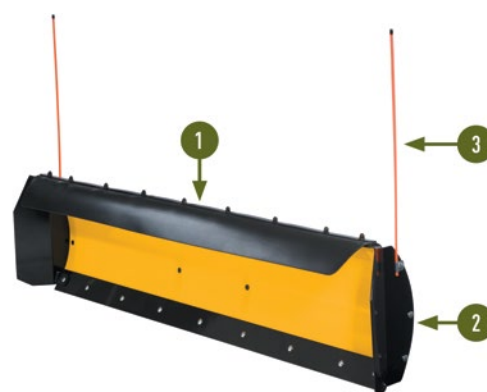
- Tough, slippery, lightweight construction from high-density polyethylene over a steel frame
- Available in 50-in.- and 60-in.-wide options with a 16-in. overall height
- Adjustable skid plates
- Requires Plow Push Frame and Mount Kit
- Snow Deflectors, End Plates and Edge Markers sold separately (excludes SPEEDPlow)



0436-228 50-IN. BLADE - YELLOW

0436-296 60-IN. BLADE - YELLOW

SNOW DEFLECTORS



0436-231 1. SNOW DEFLECTORS

USE WITH 50-IN. STRAIGHT BLADES

0436-299

USE WITH 60-IN. STRAIGHT BLADES (EXCLUDES SPEEDPLOW PRODUCTS)

0436-232 2. END PLATES

USE WITH 50-IN. & 60-IN. STRAIGHT BLADES

0541-018 3. EDGE MARKERS

USE WITH ALL NON-SPEEDPLOW BLADES

PACKAGES

CABS

ROOFS

DOORS

REAR PANELS

WINDSHIELDS

BUMPERS

WINCHES

PLOWS

PERFORMANCE

SKID PLATES &
SIDE RAILS

INTERIOR

CARGO STORAGE

VEHICLE COVERS

PERFORMANCE

ELKA® SUSPENSION SHOCK KITS

- Elka Suspension is an industry-leading manufacturer of innovative high-performance suspension products
- A wide range of adjustments provide maximum performance and rider comfort for all types of riding
- Elka has factory-calibrated packages for each Wildcat model

ELKA STAGE 5 SHOCKS

- Experience superior ride quality and tuning ability with Elka Stage 5 shocks
- This lightweight coil-over design provides a wide range of ultra-precise adjustments for maximum performance and comfort for a variety of riding conditions
- Adjustments are preset from the factory
- The Stage 5 allows ultimate personal tuning with high-speed compression, low-speed compression, rebound extension speed control and spring adjustments
- Available in a 46 mm body for the Wildcat Sport and a 36 mm body for the Wildcat Trail



2436-401 46 MM FRONT SHOCKS (PAIR)

'15-'17 WILDCAT SPORT MODELS

2436-402 46 MM REAR SHOCKS (PAIR)

'15-'17 WILDCAT SPORT MODELS



2436-403 36 MM FRONT SHOCKS (PAIR)

'14-'17 WILDCAT TRAIL MODELS

2436-404 36 MM REAR SHOCKS (PAIR)

'14-'17 WILDCAT TRAIL MODELS

ELKA STAGE 3 SHOCKS

- Experience improved ride quality and performance with Elka's 36 mm body Stage 3 shock
- This lightweight coil-over design provides high-speed compression and spring adjustments for performance and comfort in a variety of riding conditions
- Adjustments are preset from the factory



2436-405 36 MM FRONT SHOCKS (PAIR)

'14-'17 WILDCAT TRAIL MODELS

2436-406 36 MM REAR SHOCKS (PAIR)

'14-'17 WILDCAT TRAIL MODELS

SKID PLATES & SIDE RAILS *

* BULKY ITEMS ARE NOT ON STOCK - PLEASE ASK FOR LEAD TIME

SKID PLATES – HMWPE *

- High-molecular-weight polyethylene provides superior impact resistance and allows you to glide over obstacles
- Wraparound design protects rocker panels and floorboard
- Replaceable 0.5-in.-thick UHMWPE rear scrub plate protects the frame from impacts
- Access holes for maintenance and drainage



1436-995

'14-'17 WILDCAT TRAIL & WILDCAT SPORT MODELS

A-ARM GUARDS – HMWPE

- Rugged 0.25-in.-thick HMWPE material assists in sliding over obstacles
- Provides additional protection to suspension components
- Large drainage holes to reduce buildup



1436-997 FRONT

'14-'17 WILDCAT TRAIL MODELS

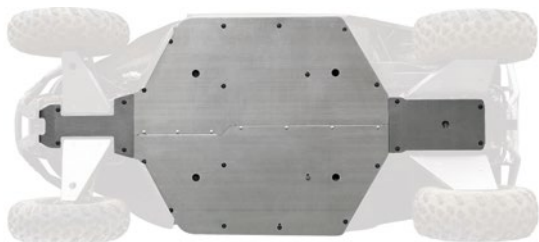


2436-042 REAR

'14-'17 WILDCAT TRAIL MODELS

ALUMINUM SKID PLATE *

- Provides full underbody coverage to help protect the frame and components
- Replaces stock skid plates with these 0.125-in.-thick aluminum skid plates
- Access holes for maintenance and drainage
- Premium smooth grain anodized finish
- A-arm guards not included



1436-973

*14-'17 WILDCAT TRAIL & WILDCAT SPORT MODELS

ALUMINUM A-ARM GUARDS

- 10-gauge aluminum helps protect suspension and drivetrain
- Premium smooth grain anodized finish complements other aluminum accessories
- Quick and easy installation



1436-972 FRONT

*14-'17 WILDCAT TRAIL MODELS



1436-971 REAR

*14-'17 WILDCAT TRAIL MODELS

ALUMINUM ROCK SLIDERS

- Flush mount installation maintains excellent ground clearance and protection
- Lightweight aluminum construction
- Designed to complement Aluminum Bumpers
- Sold as a pair



1436-982

*14-'17 WILDCAT TRAIL & WILDCAT SPORT MODELS

STEEL ROCK SLIDERS

- Flush mount installation maintains excellent ground clearance and protection
- Steel construction for added durability
- Designed to complement Steel Bumpers
- Sold as a pair



1436-981

*14-'17 WILDCAT TRAIL & WILDCAT SPORT MODELS

FENDER FLARES

- Rear fenders provide coverage for the rear and side of your vehicle to divert mud and debris from tires
- Sleek design maintains 50-in. vehicle width
- Rugged HMWPE construction
- Works with aluminum or steel Arctic Cat bumpers



2436-003 FRONT

*14-'17 WILDCAT TRAIL MODELS



2436-004 REAR

*14-'17 WILDCAT TRAIL MODELS

PACKAGES

CABS

ROOFS

DOORS

REAR PANELS

WINDSHIELDS

BUMPERS

WINCHES

PLOWS

PERFORMANCE

SKID PLATES &
SIDE RAILS

INTERIOR

CARGO STORAGE

VEHICLE COVERS

INTERIOR

DASH-MOUNTED MIRROR

- Mounts to side of dash or front fenders
- Protected with fold-in option
- Adjustable mirror shaft for customized viewing



2436-012 LEFT HAND (SHOWN)

'14-'17 WILDCAT TRAIL & WILDCAT SPORT MODELS

2436-013 RIGHT HAND

'14-'17 WILDCAT TRAIL & WILDCAT SPORT MODELS

SUN VISOR

- Clamps to ROPS tubing where needed to block sun
- Dark tint still allows full field of vision
- Ratchet system allows for easy adjustment into multiple positions
- Sold individually



2436-016
UNIVERSAL

\$79.95 | \$1.70/mo.**

CARGO STORAGE

OVERHEAD BAGS

- Easy-to-access overhead storage
- Sold as a pair, including front (shown) and rear Overhead Bags



2436-026

'14-'17 WILDCAT TRAIL & WILDCAT SPORT MODELS

KICK PANEL BAGS

- Easy-access compartment provides convenient storage
- Sold as a pair



2436-027

'14-'17 WILDCAT TRAIL & WILDCAT SPORT MODELS

SHOULDER BAG

- 1,000-denier coated nylon fabric with compression-molded accent for durability
- Bolt-on design provides secure storage



2436-022

'14-'17 WILDCAT TRAIL & WILDCAT SPORT MODELS

TRUNK BAG

- Zipperless bag with dual-buckle closure
- Lightweight aluminum frame
- Fade-resistant heavy-duty 18-oz. PVC-coated polyester material



2436-028

'14-'17 WILDCAT TRAIL & WILDCAT SPORT MODELS

UNDERHOOD CARGO BOX

- Convenient underhood storage
- Lid features a gasket for a watertight seal



1436-999

*14-'17 WILDCAT TRAIL & WILDCAT SPORT MODELS

ANGLE BARS

- Baja-inspired steel tube design with bolt-on mounting plates
- Factory designed to accommodate other Arctic Cat accessories



1436-976 BLACK

*14-'17 WILDCAT TRAIL & WILDCAT SPORT MODELS

SPARE TIRE CARRIER

- Fits all Arctic Cat accessory wheels and tires
- Installs directly to Wildcat Trail / Wildcat Sport Angle Bars (1436-976) (required for installation)
- OEM integration and styling
- Combination steel and aluminum construction for optimum strength and weight



1436-975

*14-'17 WILDCAT TRAIL & WILDCAT SPORT MODELS

ROTOPAX™ FUEL CAN & MOUNTING KIT

- Extend your traveling distance with the RotopaX 1.75-gallon fuel can
- Requires Angle Bars (1436-976)



2436-313

*14-'17 WILDCAT TRAIL & WILDCAT SPORT MODELS

VEHICLE COVERS

TRANSPORT/STORAGE COVER

- Heavy-duty 600-denier Surlast fade-resistant polyester
- Helps prevent damage during transport and storage
- Interior lining protects plastic
- Features ratchet-and-buckle tensioning system
- Fits with Hard Top, Soft Cab or Bumpers



1436-998

*14-'17 WILDCAT TRAIL MODELS

2436-186

*15-'17 WILDCAT SPORT MODELS



2436-183

*14-'17 WILDCAT TRAIL MODELS WITH ANGLE BARS OR SPARE TIRE CARRIER INSTALLED

2436-187

*15-'17 WILDCAT SPORT MODELS WITH ANGLE BARS OR SPARE TIRE CARRIER INSTALLED

PACKAGES

CABS

ROOFS

DOORS

REAR PANELS

WINDSHIELDS

BUMPERS

WINCHES

PLOWS

PERFORMANCE

SKID PLATES &
SIDE RAILS

INTERIOR

CARGO STORAGE

VEHICLE COVERS

CONTENTS

36	READY 2 ROLL PACKAGES
40	CABS
42	ROOFS
43	REAR PANELS
43	WINDSHIELDS
45	BUMPERS
46	WINCHES
49	PLOWS
51	INTERIOR
51	SOFT GOODS
52	BODY & FRAME
53	ACCESSORIES
55	TIGERTRAX

BRAND YOUR STEED



FRONT BRUSHGUARD BUMPER pg 45



REAR BUMPER pg 45



TIGERTRAX 2 pg 55

NEW FOR 2017



SOFT CAB KIT (PROWLER 500 & HDX CREW) pg 47, 48

HARD CAB WITH STEEL DOORS pg 42

STEEL DOOR KIT pg 40

SOFT DOOR KIT (PROWLER 500 & HDX CREW) pg 41

SOFT TOP WITH REAR PANEL pg 42

BIMINI TOP pg 42

HARD TOP (PROWLER 500 & HDX CREW) pg 42

POLYCARBONATE REAR PANEL (PROWLER 500) pg 43

SOFT REAR PANEL (PROWLER 500) pg 43

GLASS WINDSHIELD (PROWLER, HDX & HDX CREW) pg 43

FLIP-UP POLYCARBONATE WINDSHIELD (PROWLER, HDX & HDX CREW) pg 44

FULL WINDSHIELD (PROWLER 500) pg 44

HALF WINDSHIELD (PROWLER 500) pg 44

WINDSHIELD WIPER – WASHER KIT (PROWLER, HDX & HDX CREW) pg 45

FRONT BUMPER (PROWLER 500) pg 45

REAR BUMPER (PROWLER 500) pg 46

5,000-LB. PROVANTAGE WINCH KIT (PROWLER 500 & HDX CREW) pg 46

5,000-LB. PROVANTAGE WINCH KIT WITH SYNTHETIC ROPE (PROWLER 500 & HDX CREW) pg 47

3,000-LB. PROVANTAGE WINCH KIT (PROWLER 500 & HDX CREW) pg 47

WINCH MOUNT (PROWLER 500) pg 48

SPEEDPLOW POLYETHYLENE PLOW BLADE pg 50

ROV SPEEDPLOW ONE-WAY BLADE ATTACHMENT pg 50

TRAILERABLE COVER (PROWLER 500 & HDX CREW) pg 52

REARVIEW MIRROR pg 54

SIDE MIRROR KIT pg 54

PROWLER HDX

CLAMSHELL GUN SCABBARD pg 53

HARD CAB KIT WITH STEEL DOORS pg 42

HDX GUN SCABBARD MOUNT pg 53

WINDSHIELD WIPER KIT pg 45

CARBON CAT MX HELMET pg 105

5,000-LB. PROVANTAGE WINCH KIT pg 46



PROWLER 500



HARD TOP (2436-241) pg 42

FULL POLYCARBONATE WINDSHIELD (2436-259) pg 44

REARVIEW MIRROR (2436-378) pg 54

REAR BUMPER (2436-347) pg 46

FRONT BUMPER (2436-346) pg 45

3,000-LB. PROVANTAGE WINCH KIT (2436-377) pg 47

WINCH MOUNT (2436-348) pg 48

DECKED-OUT PACKAGE

BULKY ITEM - ASK FOR LEAD TIME

NOT MOUNTABLE ON HOMOLOGATED UNITS

2436-547 '17 PROWLER 500

HARD TOP (2436-241) pg 42

FULL POLYCARBONATE WINDSHIELD (2436-259) pg 44

REAR BUMPER (2436-347) pg 46

FRONT BUMPER (2436-346) pg 45

GEARED-UP PACKAGE

BULKY ITEM - ASK FOR LEAD TIME

NOT MOUNTABLE ON HOMOLOGATED UNITS

2436-546 '17 PROWLER 500



PROWLER XT

PROWLER & HDX ROOF (2436-140) pg 42

V-BAG (1436-530) pg 52

FULL WINDSHIELD (2436-381) pg 44

SIDE MIRROR — LEFT (1436-506) pg 54

SIDE MIRROR — RIGHT (1436-505) pg 54

REAR BUMPER (0436-986) pg 46

FRONT BRUSHGUARD BUMPER (2436-305) pg 45

5,000-LB. PROVANTAGE WINCH KIT (2436-103) pg 46

PROWLER XT DECKED-OUT PACKAGE

BULKY ITEM - ASK FOR LEAD TIME
NOT MOUNTABLE ON HOMOLOGATED UNITS
2436-549 '16-'17 PROWLER XT

2-PIECE ROOF (1436-519) pg 42

HALF WINDSHIELD (2436-159) pg 44

FRONT BRUSHGUARD BUMPER (2436-305) pg 45

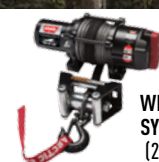
REAR BUMPER (0436-986) pg 46

PROWLER XT GEARED-UP PACKAGE

BULKY ITEM - ASK FOR LEAD TIME
NOT MOUNTABLE ON HOMOLOGATED UNITS
2436-548 '16-'17 PROWLER XT



**HARD CAB
WITH STEEL DOORS**
(2436-383) pg 40



**5,000-LB.
PROVANTAGE
WINCH KIT WITH
SYNTHETIC ROPE**
(2436-104) pg 47

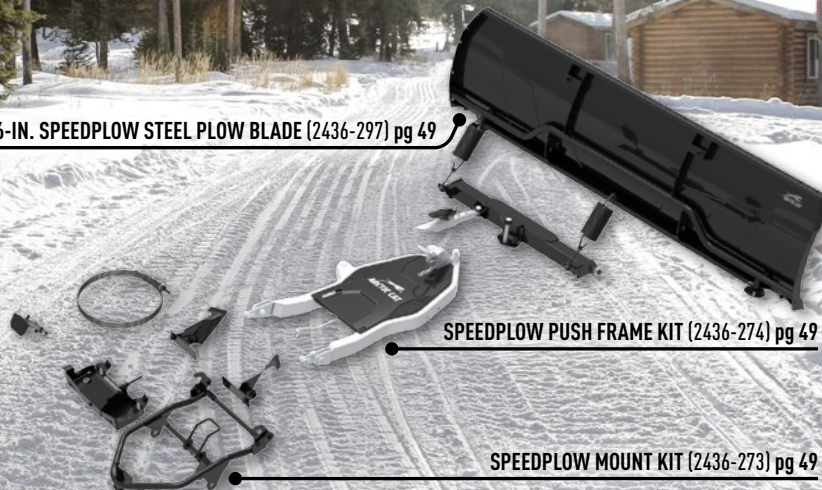


WINDSHIELD WIPER KIT
(1436-522) pg 40

PROWLER XT WINTER PACKAGE

BULKY ITEM - ASK FOR LEAD TIME
NOT MOUNTABLE ON HOMOLOGATED UNITS
2436-550 '16-'17 PROWLER XT

66-IN. SPEEDPLOW STEEL PLOW BLADE (2436-297) pg 49



SPEEDPLOW PUSH FRAME KIT (2436-274) pg 49

SPEEDPLOW MOUNT KIT (2436-273) pg 49

PROWLER & HDX ROOF (2436-140) pg 42

V-BAG (1436-709) pg 52

SIDE MIRROR — RIGHT (1436-505) pg 54

FLIP-UP POLYCARBONATE WINDSHIELD (2436-219) pg 44

SIDE MIRROR — LEFT (1436-506) pg 54

FRONT BRUSHGUARD BUMPER (2436-305) pg 45

5,000-LB. PROVANTAGE WINCH KIT (2436-103) pg 46

REAR BUMPER (1436-609) pg 46

HDX DECKED-OUT PACKAGE

BULKY ITEM - ASK FOR LEAD TIME
NOT MOUNTABLE ON HOMOLOGATED UNITS
2436-552 '16-'17 HDX



2-PIECE ROOF (1436-519) pg 42

HALF WINDSHIELD (2436-159) pg 44

REAR BUMPER (1436-609) pg 46

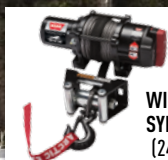
FRONT BRUSHGUARD BUMPER (2436-305) pg 45

HDX GEARED-UP PACKAGE

BULKY ITEM - ASK FOR LEAD TIME
NOT MOUNTABLE ON HOMOLOGATED UNITS
2436-551 '16-'17 HDX



**HARD CAB
WITH STEEL DOORS (2436-384)
pg 40**



**5,000-LB.
PROVANTAGE
WINCH KIT WITH
SYNTHETIC ROPE
(2436-104) pg 47**



**WINDSHIELD
WIPER KIT
(1436-522)
pg 43**



**CAB HEATER
(2436-161)
pg 51**

HDX WINTER PACKAGE

BULKY ITEM - ASK FOR LEAD TIME
NOT MOUNTABLE ON HOMOLOGATED UNITS
2436-553 '16-'17 HDX

72-IN. SPEEDPLOW STEEL PLOW BLADE (2436-298) pg 49



SPEEDPLOW PUSH FRAME KIT (2436-274) pg 49



SPEEDPLOW MOUNT KIT (2436-273) pg 49

HDX CREW

HDX CREW HARD TOP (2436-356) pg 42

V-BAG (1436-709) pg 52

SIDE MIRROR — RIGHT (1436-505) pg 54

FLIP-UP POLYCARBONATE WINDSHIELD (2436-219) pg 44

FRONT BRUSHGUARD BUMPER (2436-305) pg 45

SIDE MIRROR — LEFT (1436-506) pg 54

REAR BUMPER (1436-609) pg 46

5,000-LB. PROVANTAGE WINCH KIT (2436-364) pg 46

HDX CREW DECKED-OUT PACKAGE

BULKY ITEM - ASK FOR LEAD TIME
NOT MOUNTABLE ON HOMOLOGATED UNITS
2436-555 '17 HDX CREW

HDX CREW HARD TOP (2436-356) pg 42

FLIP-UP POLYCARBONATE WINDSHIELD (2436-219) pg 43

FRONT BRUSHGUARD BUMPER (2436-305) pg 45

REAR BUMPER (1436-609) pg 46

HDX CREW GEARED-UP PACKAGE

BULKY ITEM - ASK FOR LEAD TIME
NOT MOUNTABLE ON HOMOLOGATED UNITS
2436-554 '17 HDX CREW

CABS *

* BULKY ITEMS ARE NOT ON STOCK - PLEASE ASK FOR LEAD TIME

HARD CAB KIT WITH STEEL DOORS *

- Complete kit includes HDPE roof, Polycarbonate Rear Panel, Glass Windshield and Steel Doors
- HDPE textured roof resists scratching
- Roof and rear panels feature the SpeedRatchet attachment system for fast, easy installation or removal
- Adjustable ventilation options in windshield, doors and rear panel
- Doors made from stamped steel for superior strength and rigidity
- Glass Windshield constructed with automotive-style fixed, laminated glass in a steel frame
- Windshield works with Windshield Wiper Kit (1436-522 or 1436-582)



2436-383
'15-'17 PROWLER (EXCLUDES PROWLER 500)

2436-384
'16-'17 HDX

STEEL DOOR KIT *

- Includes doors made from stamped steel for superior strength and rigidity
- Dual sliding windows aid airflow control
- Multiple windows for exceptional visibility
- Dual concealed steel hinges provide superior strength and sleek automotive-like appearance
- Ergonomic interior and exterior handles offer intuitive, easy operation while wearing gloves



2436-148
'15-'17 PROWLER (EXCLUDES '17 PROWLER 500); '16-'17 HDX

HARD CAB KIT WITH SOFT DOORS *

- Complete kit includes full polycarbonate windshield and rear panel, HDPE roof, soft doors and seal kit
- Doors are made from 9-oz. heavy series 70 Surlast fabric, which provides high UV protection
- Door window unzips and rolls up
- Uses SpeedRatchet attachment system for easy installation



2436-166
'16-'17 HDX

2436-342
'15-'17 PROWLER (EXCLUDES PROWLER 500)

SOFT DOOR KIT *

- Made from 9-oz. heavy series 70 Surlast fabric, which provides high UV protection
- Door window unzips and rolls up
- Vinyl windows are rated at -30°F
- Aluminum CNC-formed door frames for a lightweight and consistent fit



2436-167
'15-'17 PROWLER; '16-'17 HDX



2436-242
'17 PROWLER 500



2436-357

'17 HDX CREW

ROOF-TO-DOOR SEAL KIT



2436-165

'15-'17 PROWLER; '16-'17 HDX (SEALS 2436-167 TO 2436-140 HARD TOP)

SOFT CAB KIT *

- Complete kit includes Full Polycarbonate Windshield, roof/back panel and doors
- WindLock Windshield System mounts directly to roof for complete seal
- 9-oz. heavy series 70 Surlast fabric provides high UV protection
- Door window unzips and rolls up
- Vinyl windows are rated for temperatures as low as -30°F
- Urethane-coated fabric offers superior resistance to mold and mildew



2436-337

'16-'17 HDX

2436-160

'15-'17 PROWLER



2436-367

'17 PROWLER 500

SOFT CAB KIT — HDX CREW *

- Kit includes roof/back panel and doors
- 9-oz. heavy series 70 Surlast fabric provides high UV protection
- Door window unzips and rolls up
- Vinyl windows are rated for temperatures as low as -30°F
- Urethane-coated fabric offers superior resistance to mold and mildew
- Kit does not include windshield
- Choose from the Full Polycarbonate, Flip-Up Polycarbonate, or Fixed Glass Windshields to complete your cab enclosure



2436-355

'17 HDX CREW

PACKAGES

CABS

ROOFS

REAR PANELS

WINDSHIELDS

BUMPERS

WINCHES

PLOWS

INTERIOR

SOFT GOODS

BODY & FRAME

ACCESSORIES

TIGERTRAX

SOFT TOP WITH REAR PANEL

- 9-oz. heavy series 70 Surlast fabric provides high UV protection
- WindLock Windshield System mounts directly to roof for complete overhead seal from the elements
- One-piece top and rear panel
- Back panel rolls up for airflow control
- Windshield required for WindLock channel installation



2436-335
'16-'17 HDX

2436-168
'15-'17 PROWLER

2436-334
'17 PROWLER 500

2436-354
'17 HDX CREW

ROOFS *

* BULKY ITEMS ARE NOT ON STOCK - PLEASE ASK FOR LEAD TIME

PROWLER® & HDX™ ROOF *

- SpeedRatchet attachment system for fast, easy installation or removal
- Textured roof resists scratching
- Works with Full Windshield (2436-157), Glass Windshield (2436-218), Polycarbonate Flip-up Windshield (2436-219), Polycarbonate Rear Panel (2436-057 and 2436-216), Soft Door Kit (2436-167), Steel Doors (2436-148) and Roof-to-Door Seal Kit (2436-165)
- Does not work with LXC or VXC Cab Kits or components



2436-140
'11-'17 PROWLER; '12-'17 HDX

PROWLER 500 HARD TOP *



'17 PROWLER 500

HDX CREW HARD TOP *

- Formed HMWPE plastic roof provides strength and durability
- Front and rear sections overlap and seal in the center for overhead protection from the elements
- Works with windshields and rear panels



2436-356
'17 HDX CREW

2-PIECE ROOF *

Designed for use with Polycarbonate and VXC Glass Windshields

- Durable polyethylene construction
- Bold styling with textured surface that resists scratching
- Innovative two-piece design shields out the elements
- Does not work with Steel Doors or Soft Doors



1436-519
'11-'17 PROWLER; '12-'17 HDX

BIMINI TOP

- Durable Surlast fabric with urethane coating provides superior durability, with high UV resistance and water repellency
- Four-point attachment system makes for quick installation or removal
- Tightens easily with strap adjustments
- Provides overhead coverage from sun



2436-352
'11-'17 PROWLER; '12-'17 HDX



2436-333
'17 PROWLER 500



2436-353
'17 HDX CREW

REAR PANELS *

REAR PANEL

- Polycarbonate upper provides a clear rearward view
- Features SpeedRatchet attachment system and adjustable venting for controlling air flow



2436-216
'16-'17 HDX; '17 HDX CREW



2436-057
'15-'17 PROWLER (EXCLUDES HDX)



2436-240
'17 PROWLER 500

SOFT REAR PANEL

- Durable solution-dyed and urethane-coated Surlast fabric for premium fade resistance, water repellency and mildew resistance
- Zippered window rolls up for controlled airflow and added cab ventilation
- Works with Bimini Top and Hard Top
- Reduces dust swirl when used with a windshield



2436-215
'15-'17 PROWLER

2436-336
'16-'17 HDX; '17 HDX CREW



2436-332
'17 PROWLER 500

WINDSHIELDS *

* BULKY ITEMS ARE NOT ON STOCK - PLEASE ASK FOR LEAD TIME

GLASS WINDSHIELD

- Automotive-style fixed, laminated glass in a steel frame
- Lower panel has left, center and right opening vents for airflow control in the cab
- Works with Windshield Wiper Kit (1436-522 or 1436-582)



2436-218
'15-'17 PROWLER; '16-'17 HDX & '17 HDX CREW (EXCLUDES '17 PROWLER 500)

PACKAGES

CABS

ROOFS

REAR PANELS

WINDSHIELDS

BUMPERS

WINCHES

PLOWS

INTERIOR

SOFT GOODS

BODY & FRAME

ACCESSORIES

TIGERTRAX

FLIP-UP POLYCARBONATE WINDSHIELD *

- Scratch-resistant/hard-coated polycarbonate
- Durable nylon mounting brackets and hinges
- Low-profile ROPS clamps keep a tight seal
- Gas-assist shocks hold the windshield in the fully open position
- Adjustable positioning choices with closed, vented and fully open options to control airflow
- Exclusive vented design



2436-219

'15-'17 PROWLER; '16-'17 HDX & '17 HDX CREW (EXCLUDES '17 PROWLER 500)

FULL WINDSHIELD *

- Durable, abrasion-resistant clear polycarbonate resists scratches
- SpeedRatchet attachment system for fast, easy installation
- Left, center and right lower panel vents control airflow
- Custom trim seals to ROPS to lock out air, snow and water
- Lower panel design allows clearance for opening hood



2436-381

'15-'17 PROWLER; '16-'17 HDX & '17 HDX CREW



2436-259

'17 PROWLER 500

HALF WINDSHIELD

- Polycarbonate Half Windshield diverts air up and over driver and passenger
- Lower panel allows front hood to open



2436-159

'15-'17 PROWLER; '16-'17 HDX & '17 HDX CREW



2436-239

'17 PROWLER 500

WINDSHIELD VENT KIT

- Add to any polycarbonate windshield
- Adjustable opening positions for added airflow
- Cutout template included
- Vent opening dimensions: 14.8 in. W x 1.8 in. H



1436-809

FITS POLYCARBONATE WINDSHIELDS

WINDSHIELD WIPER – WASHER KIT

- Semi-transparent tank holds up to a half-gallon of washer fluid and offers visibility for fluid level
- 180° wiper motion clears both driver and passenger sides for an optimal field of vision
- Complete kit includes windshield drilling template for ease and speed of installation
- Excellent spray pattern quickly clears the windshield of dirt and debris



2436-369

FITS FULL POLYCARBONATE & GLASS WINDSHIELDS

WINDSHIELD WASHER KIT

- Tank holds just over a half-gallon of fluid
- Works with Windshield Wiper Kit (1436-522)



1436-523

WINDSHIELD WIPER KIT

- 180° of rotation clears both driver and passenger sides
- Kit includes wiper, motor, custom wiring harness and switch



1436-522

FITS GLASS WINDSHIELDS

MANUAL WINDSHIELD WIPER

- 8-in. to 12-in. adjustable arm length; 11-in. wiper blade length
- Fits polycarbonate and glass windshields
- NOTE: Polycarbonate windshields have a scratch-resistant coating. Caution should be taken when wiping mud or abrasive material off windshield as it will affect the coating over time.



1436-582

'06-'17 PROWLER; '17 PROWLER 500; '11-'17 HDX & '17 HDX CREW MODELS WITH WINDSHIELD

BUMPERS *

* NOT MOUNTABLE ON HOMOLOGATED PROWLERS
USE BUMPERS ONLY OFF-ROAD

PROWLER & HDX FRONT BRUSHGUARD BUMPER

- Contoured fit offers full front-facing protection for grill, hood and headlights
- Integrated four-point mounting system offers a secure fit for added strength and rigidity
- Powder-coated steel tube construction with rubber center accent offers strength with protection



2436-305

'15-'17 PROWLER; '16-'17 HDX & '17 HDX CREW

FRONT BUMPER



2436-346

'17 PROWLER 500

REAR BUMPER

- Heavy-duty, powder-coated tubular steel construction
- Mounts to rear of box frame to protect the box and tailgate areas
- Allows bed to dump



'11-'17 HDX & '17 HDX CREW



0436-986
'06-'17 PROWLER (EXCEPT HDX & FLATBED)



2436-347
'17 PROWLER 500

WINCHES

Our winches are designed to help you make the most of your machine. In fact, we pair our winches and machines to create the perfect match for the performance, durability and reliability you need. All Prowler and HDX winches share these common features:

- Arctic Cat/WARN designed and engineered
- Custom-fit wire harnesses and connections
- All-metal gear end housing and mechanical brake
- Continuous backlit illuminated rocker switch for night use and plowing
- Remote-ready wiring harness for optional remote upgrade kits

5,000-LB. PROVANTAGE WINCH KIT

- Includes 55 ft. of durable wire cable
- Powerful permanent magnet motor with 5,000 lbs. of pulling capacity
- Plow roller fairlead with larger diameter bottom roller for reduced rope stress when plowing



2436-103
'15-'17 PROWLER; '15-'17 HDX



2436-364
'17 HDX CREW



2436-387
'17 PROWLER 500

5,000-LB. PROVANTAGE WINCH KIT WITH SYNTHETIC ROPE

- Includes 50 ft. of market-leading 7/32-in. Spydura synthetic rope
- Powerful permanent magnet motor with 5,000 lbs. of pulling capacity
- Plow roller fairlead with larger diameter bottom roller for reduced rope stress when plowing



2436-104

'15-'17 PROWLER; '15-'17 HDX



2436-365

'17 HDX CREW



2436-388

'17 PROWLER 500

3,000-LB. PROVANTAGE WINCH KIT

- Includes 50 ft. of durable wire cable
- Powerful permanent magnet motor with 3,000 lbs. of pulling capacity
- Plow roller fairlead with larger diameter bottom roller for reduced rope stress when plowing
- Remote-ready wiring harness for optional remote upgrade kits



2436-102

'06-'17 PROWLER; '11-'17 HDX



2436-363

'17 HDX CREW



2436-377

'17 PROWLER 500

WIRELESS REMOTE UPGRADE KIT – ALL VEHICLES

- Works with all Arctic Cat/WARN ProVantage Winch Kits
- Easy plug-and-play installation
- 50-ft. operation radius
- Automatic system shut-off



2436-110

ALL ARCTIC CAT/WARN PROVANTAGE WINCH KITS

PROWLER & HDX

PACKAGES

CABS

ROOFS

REAR PANELS

WINDSHIELDS

BUMPERS

WINCHES

PLOWS

INTERIOR

SOFT GOODS

BODY & FRAME

ACCESSORIES

TIGERTRAX

CORDED REMOTE UPGRADE KIT – ALL VEHICLES

- Works with all Arctic Cat/WARN ProVantage Winch Kits
- Easy plug-and-play installation
- Includes remote control with 10 ft. of cord, storage bag, socket and wiring



2436-114
ALL ARCTIC CAT/WARN PROVANTAGE WINCH KITS

WINCH MOUNT

- Heavy-duty steel mount with durable, powder-coated finish
- Four mounting points work with 3,000-lb. and 5,000-lb. winches
- Steel hook loop for out-of-the-way winch hook storage when not in use
- Two-bolt mounting for easy installation or removal
- Fairlead mount designed for 6-in.-wide fairleads
- Required for winch installation on Prowler 500



2436-348
'17 PROWLER 500

STANDARD ROLLER FAIRLEAD



2441-933
'15-'17 PROWLER; '17 PROWLER 500; '16-'17 HDX; '17 HDX CREW; '12-'17 WILDCAT; '13-'17 WILDCAT 4

PLOW ROLLER FAIRLEAD

- Plow roller fairlead with larger diameter bottom roller for reduced rope stress



2441-934
'15-'17 PROWLER; '17 PROWLER 500; '16-'17 HDX; '17 HDX CREW

HAWSE FAIRLEAD

- Double-coated Hawse Fairlead reduces rope wear and improves corrosion resistance



2441-935
'15-'17 PROWLER; '17 PROWLER 500; '16-'17 HDX; '17 HDX CREW; '12-'17 WILDCAT; '13-'17 WILDCAT 4

FAIRLEAD SPACER KIT

- Designed for additional clearance for sharp-angle pulls, adding 3/4-in. cable/rope clearance between winch and fairlead
- Durable, heavy-duty steel construction



2436-179
'15-'17 PROWLER; '15-'17 HDX

WINCH ACCESSORIES KIT

- Doubles the power of your winch with the handy pulley block
- Two clevis shackles provide secure rigging
- Includes two sturdy 7,000-lb. tow straps
- Packs conveniently into the rugged Cordura nylon case



1436-600
UNIVERSAL

ROV SYNTHETIC WINCH ROPE

- Rope does not burr like steel cable
- Increased strength over steel cable
- Better fatigue resistance than steel cable



0436-962

USE WITH ALUMINUM DRUM ARCTIC CAT/WARN 2,500-LB. & 3,000-LB. WINCHES

2441-113

USE WITH 4,000 & 5,000 LB. WINCHES

PLOWS *

* BULKY ITEMS ARE NOT ON STOCK - PLEASE ASK FOR LEAD TIME

ROV SPEEDPLOW™ SYSTEM

- Turn your Arctic Cat machine into a snow-moving powerhouse with the all-new SPEEDPLOW system. You and your machine can move snow faster and easier than ever before. Designed especially for the Arctic Cat chassis, the SPEEDPLOW can be attached, removed and adjusted in seconds from the comfort of the driver's seat. When the snow gets heavy, the SPEEDPLOW gets going — with accessories including snow deflectors, drift cutters, edge markers and curb finders. In just minutes, you can clear sidewalks, plow driveways and free your space from winter's snowy grip. The SPEEDPLOW system requires installation of a Plow Mount Kit, Push Frame, Blade and Winch for use of the complete system.

No-Touch
SPEEDPLOW™

ROV SPEEDPLOW MOUNT KIT *

- Attachment frames have been designed specifically for either the HDX or Prowler chassis, for easy no-touch installation and removal of the plow
- Convenient release handle is mounted near the steering wheel inside the cab for easy access to remove your plow without leaving the seat of your vehicle
- The plastic shoe allows for convenient height adjustability of the mount and easier maneuverability of the plow system when on the ground
- Self-alignment plates guide the attachment frame during installation
- Low-profile integrated design maintains ground clearance when plow is removed



No-Touch
SPEEDPLOW™

2436-273 HDX

'15-'17 PROWLER 1000; '16-'17 PROWLER 700 XT; '16-'17 HDX

2436-314 PROWLER XT

'15 PROWLER 550; '15 PROWLER 700 XT UP TO SERIAL NUMBER ENDING 8084

ROV SPEEDPLOW PUSH FRAME KIT *

- This all-new system allows you to install the plow in seconds and remove it without ever leaving the comfort of the driver's seat
- Lever action automatically releases the winch hook from the push frame, providing no-touch removal — just release and drive away
- Kit features an integrated mid-mounting position that lifts high and installs faster than a front mount while maintaining the performance and stability of an underbody mount
- Convenient five-position angle adjustment with the foot pedal design allows you to adjust the angle of your blade without bending over
- Shear pin protection helps protect the plow system from damage when hitting a solid object
- Powder-coated steel square-tube design provides optimal strength and durability
- Rubber shock absorbers offer protection from over-angling and soften the impact during a shear pin break



2436-274

USE WITH ROV SPEEDPLOW PROWLER & HDX MOUNT KITS

SPEEDPLOW STEEL BLADE – 20-IN. HEIGHT *

- Optimized moldboard curve creates increased snow-roll performance and allows for more efficient snow movement
- Compatible with a variety of accessories for added ease of plowing
- Accessories include ready-to-install snow deflectors, drift cutters, edge markers, curb finders and easy-to-remove wearbars
- Stamped plow face adds increased rigidity to the face of the plow



2436-297 66-IN. BLADE

USE WITH ROV SPEEDPLOW PUSH FRAME KITS

72-IN. BLADE

USE WITH ROV SPEEDPLOW PUSH FRAME KITS

PACKAGES

CABS

ROOFS

REAR PANELS

WINDSHIELDS

BUMPERS

WINCHES

PLOWS

INTERIOR

SOFT GOODS

BODY & FRAME

ACCESSORIES

TIGERTRAX

SPEEDPLOW POLYETHYLENE PLOW BLADE *

- Tough, slippery, lightweight construction from high-density polyethylene skin, over a steel tube frame
- 72-in.-wide blade with a 20-in. overall height and adjustable skid plates
- Includes Stamped Steel Plow Shoes with tool-free adjustment pins
- Requires Plow Push Frame and Mount Kit
- Snow Deflectors, End Plates and Edge Markers sold separately



2436-300 72-IN. BLADE
USE WITH ROV SPEEDPLOW PUSH FRAME KITS

ROV SPEEDPLOW ONE-WAY BLADE ATTACHMENT *

- Converts SPEEDPlow blade into a one-way tapered blade
- Stamped one-piece steel blade attachment rolls snow further than standard SPEEDPlow blade
- Steel frame with durable, glossy black powder-coated finish
- Left-side drift cutter keeps snow contained and moves the snow to the right
- Works with 20-in. tall SPEEDPlow blades



2436-301
UNIVERSAL – WORKS WITH ALL ROV SPEEDPLOW BLADES

SPEEDPLOW DRIFT CUTTERS – FOR 20-IN. HEIGHT BLADE *

- Precision fit for SPEEDPlow blades to keep snow in the plow and aid in controlling snow and cutting cleaner passes
- Does not work with curb guards or UHMW wearbars
- Sold in pairs



2436-302
USE WITH 20-IN. HIGH ROV SPEEDPLOW BLADES

SPEEDPLOW UNIVERSAL BLADE CURB FINDER

- Heavy-duty, powder-coated 1/4-in. stamped steel plate protects the plow from damage caused by contact with curbs
- Easy to install on any SPEEDPlow blade
- Does not work with drift cutters
- Sold in pairs



2436-275
UNIVERSAL – FITS WITH ALL SPEEDPLOW BLADES

SPEEDPLOW SNOW DEFLECTORS *

- Large rubber barrier increases forward movement of snow and prevents snow from rolling over the top of the blade
- Steel support braces add strength and support to the rubber barrier
- May be custom cut to length



2436-309 66-IN. BLADE
USE WITH 66-IN. SPEEDPLOW BLADES

2436-310 72-IN. BLADE
USE WITH 72-IN. SPEEDPLOW BLADES

SPEEDPLOW UNIVERSAL EDGE MARKERS

- One-piece, zinc-plated forged-steel base offers added strength and longevity, and mounts to predetermined mounting location in blade
- Increased visibility with the high-visibility PVC marker, allowing for precision handling of your plow system
- Sold in pairs



2436-277
UNIVERSAL – FITS WITH ALL SPEEDPLOW BLADES

SPEEDPLOW UNIVERSAL TRACK EXTENSION *

- Extends push frame to accommodate added height when TigerTrax™ are installed
- Bolts directly onto ATV and ROV SPEEDPLOW push frame
- No drilling required



2436-311

UNIVERSAL – WORKS WITH ATV & ROV SPEEDPLOW PUSH FRAMES

72-IN. QUICK-ATTACH PLOW KIT *

- Designed and engineered exclusively for Arctic Cat Prowler and HDX models
- Includes blade, frame and mount
- Attaches/detaches in less than 10 seconds
- Wide, 72-in. two-way tapered blade design throws snow farther in either direction
- 16-in. center height with blade ends tapering out to 22 in.
- Five adjustable plow positions for increased versatility
- Durable, heavy-duty steel construction
- Standard Snow Deflectors and Edge Markers for increased snow handling
- Requires 3,000-lb. Winch Kit to lift



2436-138

'06-'17 PROWLER; '11-'17 HDX (EXCLUDES '17 PROWLER 500)

QUICK-ATTACH TIGERTRAX EXTENSION *

- Provides required blade clearance when TigerTrax Kit is installed
- Does not work with SPEEDPLOW System



1436-608

USE WITH QUICK-ATTACH PLOW KIT (2436-138)

INTERIOR

CAB HEATER

- Space-saving, underhood-mounted heat unit
- High-output, dual-speed fan and two-directional outlets in splash panel keep feet warm
- Fog-free windshield from two-direction dash-mounted defrosters
- Comes complete with installation kit and instructions



2436-161

'15-'17 PROWLER; '16-'17 HDX & '17 HDX CREW (EXCLUDES '17 PROWLER 500)

SOFT GOODS

BOX ENCLOSURE

- Sturdy aluminum framework and canvas construction easily mounts to the rear cargo box
- Front and rear see-through windows with zippered rear access
- Lays down when not in use
- Not for use with LXC Cab Kit



1436-102

'06-'17 PROWLER (EXCLUDES HDX & '17 PROWLER 500)

1436-930

'12-'17 HDX & '17 HDX CREW

PACKAGES

CABS

ROOFS

REAR PANELS

WINDSHIELDS

BUMPERS

WINCHES

PLOWS

INTERIOR

SOFT GOODS

BODY & FRAME

ACCESSORIES

TIGERTRAX

TRAILERABLE COVER

- Heavy-duty, 600-denier, solution-dyed polyester resists fading
- Secures with a ratchet system to withstand trailering winds
- Lined windshield area
- Protective padding on vehicle contact points for added scratch protection
- Fabric fitting allows room for additional installed accessories



1436-559 PROWLER
'06-'17 PROWLER (EXCLUDES HDX)

1436-513 HDX
'12-'17 HDX

NEW

2436-385 HDX CREW
'17 HDX CREW

NEW

2436-386 PROWLER 500
'17 PROWLER 500

STORAGE COVER

- Custom fit

1436-264
'06-'17 PROWLER; '11-'17 HDX (EXCLUDES '17 PROWLER 500)

V-BAG

- Gives extra storage in unused space
- Mounts to "V" section in rear canopy tube



1436-530
'11-'17 PROWLER (EXCLUDES HDX & '17 PROWLER 500)

1436-709
'11-'17 HDX & '17 HDX CREW

SOFT-SCABBARD KIT

- Plush sherpa lining with room for two guns
- Mudguard coated zippers



1436-529
'06-'17 PROWLER; '11-'17 HDX & '17 HDX CREW (EXCLUDES '17 PROWLER 500)

BODY & FRAME

NERF BARS

- Slip-resistant step for easy access to your Prowler or HDX
- Strong, heavy-duty, powder-coated steel with solid four-point attachment



1436-025
'06-'17 PROWLER; '11-'17 HDX (EXCLUDES '17 PROWLER 500)

PROWLER SIDE STEPS

- Heavy-duty steel side step for ease of entry
- Grip louvers for added traction
- Sold in pairs



1436-647
'06-'17 PROWLER; '11-'17 HDX (EXCLUDES '17 PROWLER 500)

SIDE RESTRAINT KIT

- Kit includes upper and lower, left and right side restraints and webbing



1436-937

'06-'10 PROWLER; '11 HDX

\$159.95 | \$3.39/mo.**

ACCESSORIES

CARGO BOX ORGANIZER

- Heavy-duty underhood storage bag offers rugged out-of-the-way storage
- Features multiple pockets to keep your gear organized
- Easy install with self-tapping screws
- Front organizer does not work with heater kit installed



2436-319 FRONT

'15-'17 PROWLER; '16-'17 HDX & '17 HDX CREW (EXCLUDES '17 PROWLER 500)



2436-320 REAR

'15-'17 PROWLER; '16-'17 HDX & '17 HDX CREW (EXCLUDES '17 PROWLER 500)

HDX ELECTRIC CARGO BOX LIFT

- Complete custom kit includes everything needed for installation
- Designed with a heavy-duty outdoor actuator to provide smooth cargo box lifting and lowering action in any environment
- Built-in limiter switch shuts off lift motor when lift is complete, maintaining motor function and longevity
- Dash-mounted rocker switch for convenient lift and lowering



2436-068

'11-'16 HDX (FOR 2016 VEHICLE SERIAL NUMBERS 4UF16MPV6GT300896 & LOWER)

2436-330

'16-'17 HDX (FOR 2016 VEHICLE SERIAL NUMBERS 4UF16MPV6GT300897 & HIGHER) & '17 HDX CREW

CLAMSHELL GUN SCABBARD

- High-density foam padding protects your firearm
- Tough, high-density polyurethane outer shell
- Carrying handle fits both left- and right-handed guns
- Accommodates guns up to 51 in. long, guns with pistol grips, and scopes up to 60 mm



1436-384

UNIVERSAL – GUN SCABBARD ONLY

HDX GUN SCABBARD MOUNT

- Mounts directly to HDX box
- Provides quick, easy access to guns
- Quick-release feature for gun scabbard
- Rugged black anodized construction
- Works with Clamshell Gun Scabbard (1436-384), sold separately



1436-678

'11-'17 HDX & '17 HDX CREW

PACKAGES

CABS

ROOFS

REAR PANELS

WINDSHIELDS

BUMPERS

WINCHES

PLOWS

INTERIOR

SOFT GOODS

BODY & FRAME

ACCESSORIES

TIGERTRAX

REARVIEW MIRROR (NOT E-MARKED)

- 10-in. x 3.5-in. wide-angle, adjustable convex housing provides excellent rear visibility
- Constructed with durable, high-strength reinforced materials
- Clamshell mounting clamp fits ROPS tubing from 3/4 in. to 1 in.
- Includes installation tools and all mounting hardware for easy assembly



2436-378

'15-'17 PROWLER; '17 PROWLER 500; '16-'17 HDX; '17 HDX CREW

REARVIEW MIRROR (NOT E-MARKED)

- Easily mounts to Prowler canopy tube
- 4-in. x 11-in. size gives a nice, wide rear view



1436-414

'11-'17 PROWLER; '12-'17 HDX & '17 HDX CREW

SIDE MIRROR KIT (NOT E-MARKED)

- 7.75-in. x 4.125-in. convex mirrors provide image stabilization and a wide viewing angle
- High-impact ABS plastic housing and shatterproof glass resist damage
- Breakaway hinge feature folds mirror back upon impact
- Ball-and-socket joint gives a broad range of viewing angles
- Includes left and right mirrors



2436-380

'15-'17 PROWLER; '17 PROWLER 500; '16-'17 HDX; '17 HDX CREW

SIDE MIRROR (NOT E-MARKED)

- 5-in. x 6.5-in. adjustable mirror head provides superior visibility
- Bracket and hardware included



1436-505 RIGHT HAND

'11-'17 PROWLER; '12-'17 HDX & '17 HDX CREW

1436-506 LEFT HAND

'11-'17 PROWLER; '12-'17 HDX & '17 HDX CREW

SUN VISOR

- Clamps to ROPS where needed to block sun
- Dark tint still allows full field of vision
- Ratchet system allows for easy adjustment into multiple positions
- Sold individually



2436-016

'11-'17 PROWLER; '12-'17 HDX & '17 HDX CREW

OIL COOLER

- Provides additional engine oil cooling in extremely high temperatures
- Recommended for heavy-pulling, heavy-load conditions or extended high-speed operation
- Includes oil cooler, oil tower, filter, hoses and mounting brackets for Prowler 550 and 700 and HDX 700



1436-481

550-700 PROWLER AND HDX MODELS WITHOUT OIL COOLER (EXCLUDES '17 PROWLER 500)

TIGERTRAX

ROV TIGERTRAX 2

- If you're looking for the next level in performance, the Arctic Cat team has delivered! Building on the tried-and-true original TigerTrax system, we have brought you the next evolution in performance all-season tracks. Custom fit and optimized for your Arctic Cat, the TigerTrax 2 will take you farther and allow you to climb higher. It's the most terrain-capable, all-season Side by Side track system available today. Improved flotation, increased ground clearance, optimized frame geometry, aggressive track design and significant increase in ground traction will give you the edge in deep snow, sand, swamps and the nastiest terrain. Simply stated, when there is terrain to be conquered and when you simply just need to get there, TigerTrax 2 will take you there

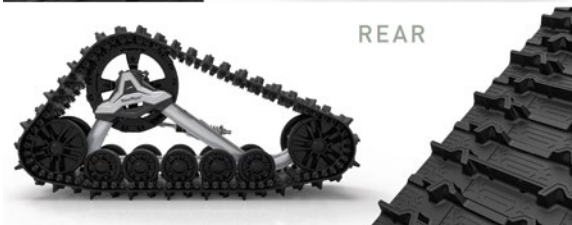
• NOTE: Requires Track Kit, Mount Kit and Clutch Kit, sold separately

ALL-SEASON ROV TRACK KIT

TIGERTRAX²



FRONT



REAR

1436-882

'08-'17 PROWLER 700-1000; '11-'17 HDX 700

MOUNTING BRACKETS KIT



1436-916

'08-'14 PROWLER 700 (EXCEPT HDX)

1436-917

'08-'14 PROWLER 1000; '11-'15 HDX

2436-372

'15-'17 PROWLER 700 (EXCLUDES HDX)

2436-371

'15-'17 PROWLER 1000; '16-'17 HDX (EXCLUDES HDX CREW)

4-SEASON CLUTCH KIT



1436-614

'08-'17 PROWLER 700; '11-'17 700 HDX

1436-333

'09-'17 PROWLER 1000

PROWLER & HDX

PACKAGES

CABS

ROOFS

REAR PANELS

WINDSHIELDS

BUMPERS

WINCHES

PLOWS

INTERIOR

SOFT GOODS

BODY & FRAME

ACCESSORIES

TIGERTRAX

CONTENTS

58	READY 2 ROLL PACKAGES
60	WINDSHIELDS
61	HAND GUARDS
61	MIRRORS
62	BUMPERS
64	PLOWS
69	WINCHES
71	BODY & FRAME
72	UNDERBODY
72	RACKS
76	COVERS
76	CARGO BAGS
78	HUNTING
80	COLD-WEATHER GEAR
81	TRV
82	TIGERTRAX
82	SPRAYERS

NEW FOR 2017



ZIPPERLESS RACK BAG pg 76

BRUSHGUARD BUMPERS pg 77

REAR BUMPERS pg 63

SPEEDPLOW ONE-WAY BLADE ATTACHMENT pg 65

SPEEDPLOW LIMIT SWITCH pg 66

SKID PLATE KIT & A-ARM GUARDS
(ALTERRA FULL-SIZE) pg 72

FRONT RACK EXTENSION (ALTERRA MID-SIZE) pg 73

SPEEDLOCK COVER pg 73

CARGO BOX
(ALTERRA FULL-SIZE & ALTERRA TRV) pg 75

ZIPPERLESS RACK BAGS
(ALTERRA FULL-SIZE & ALTERRA TRV) pg 77

FENDER BAG (ALTERRA FULL-SIZE) pg 78

GUN HOLSTER (ALTERRA FULL-SIZE) pg 79

TRV BOX ATTACHMENT (ALTERRA TRV) pg 81

EVERYTHING YOU NEED TO WORK HARD AND PLAY HARDER



ATV SPEEDPLOW STEEL PLOW BLADE pg 65
SPEEDPLOW SNOW DEFLECTORS pg 66
SPEEDPLOW UNIVERSAL EDGE MARKERS pg 66



SPEEDRACK BACKREST pg 74



MOLDED RACK TRAY pg 79



TIGERTRAX pg 82

ATV

REAR BUMPER pg 62

ZIPPERLESS RACK BAG pg 77

PROTECTIVE VESTS pg 106

CARBON CAT PRO HELMET pg 111
ADULT GOGGLES pg 106

AIRCAT HAND GUARDS pg 61

3-IN. RACK EXTENSION pg 73

3,000-LB. PROVANTAGE WINCH KIT pg 69

FRONT BRUSHGUARD BUMPER pg 62

WINDGUARD 2 WINDSHIELD pg 60

CENTER BAG — FRONT pg 77



ALTERRA MID-SIZE

WINDGUARD 2 WINDSHIELD TALL (2436-156) pg 60

DELUXE REAR BUMPER (2436-507) pg 63

FRONT BRUSHGUARD BUMPER (2436-506) pg 62

ALTERRA MID-SIZE GEARED-UP PACKAGE

BULKY ITEM - ASK FOR LEAD TIME

NOT MOUNTABLE ON HOMOLOGATED UNITS

2436-541 '17 ALTERRA 400 & 450; '16 ALTERRA 400 & 450



TIRE CHAINS
(0436-026) pg 80



2,500-LB.
PROVANTAGE
WINCH KIT WITH
SYNTHETIC ROPE
(2436-101) pg 70



WINDGUARD 2
WINDSHIELD — TALL
(2436-156) pg 60

DELUXE HANDLEBAR/
THUMB WARMERS
(1436-271) pg 80



ALTERRA MID-SIZE WINTER PACKAGE

BULKY ITEM - ASK FOR LEAD TIME

NOT MOUNTABLE ON HOMOLOGATED UNITS

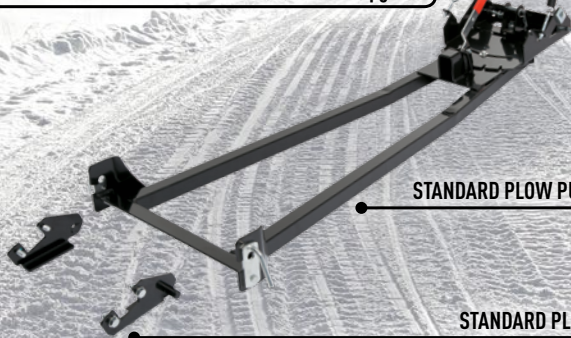
2436-542 '17 ALTERRA 400 & 450; '16 ALTERRA 400 & 450

50-IN. POLYETHYLENE PLOW BLADE (0436-228) pg 72



STANDARD PLOW PUSH FRAME KIT (0436-636) pg 72

STANDARD PLOW MOUNT KIT (1436-191) pg 72



ALTERRA FULL-SIZE

AIRCAT HAND GUARDS (1436-375) pg 61

6-IN. RACK EXTENSION (2436-120) pg 73

RACK BAG (2436-176) pg 76

DELUXE REAR BUMPER (2436-504) pg 62

3-IN. RACK EXTENSION (2436-119) pg 73

4 SPEEDLOCKS (2436-501) pg 73

FRONT BRUSHGUARD BUMPER (2436-503) pg 62

3,000-LB. PROVANTAGE WINCH KIT (2436-527) pg 69

ALTERRA FULL-SIZE DECKED-OUT PACKAGE

BULKY ITEM - ASK FOR LEAD TIME

NOT MOUNTABLE ON HOMOLOGATED UNITS

2436-543 '17 ALTERRA 550-700; '16 ALTERRA 550-700; '15 ALL XR

AIRCAT HAND GUARDS (1436-375) pg 61

4 SPEEDLOCKS (2436-501) pg 73

6-IN. RACK EXTENSION (2436-120) pg 73

3-IN. RACK EXTENSION (2436-119) pg 73

REAR BUMPER (2436-518) pg 62

FRONT BUMPER (2436-192) pg 62

ALTERRA FULL-SIZE GEARED-UP PACKAGE

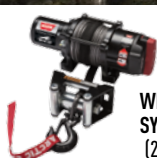
BULKY ITEM - ASK FOR LEAD TIME

NOT MOUNTABLE ON HOMOLOGATED UNITS

2436-226 '17 ALTERRA 550-700; '16 ALTERRA 550-700; '15 ALL XR



TIRE CHAINS
(0436-027) pg 80



3,000-LB.
PROVANTAGE
WINCH KIT WITH
SYNTHETIC ROPE
(2436-528) pg 70



WINDGUARD 2
WINDSHIELD — TALL
(2436-156) pg 60



DELUXE HANDLEBAR/
THUMB WARMERS
(1436-271) pg 80

ALTERRA FULL-SIZE WINTER PACKAGE

BULKY ITEM - ASK FOR LEAD TIME

NOT MOUNTABLE ON HOMOLOGATED UNITS

2436-544 '17 ALTERRA 550-700; '16 ALTERRA 550-700; '15 ALL XR

66-IN. SPEEDPLOW STEEL PLOW BLADE (2436-293) pg 69

SPEEDPLOW PUSH FRAME KIT (2436-272) pg 69

SPEEDPLOW MOUNT KIT (2436-271) pg 69

WINDSHIELDS *

* NOT MOUNTABLE ON HOMOLOGATED ATVS, NOT E-MARKED

WINDPRO™ WINDSHIELD SYSTEM *

- Removable in 10 seconds, no tools necessary
- Dashboard includes: built-in beverage holder, flashlight holder with flashlight, surface for mounting GPS or cellphone, dual mirrors
- Durable, injection-molded HDPE
- Convenient quick-release feature
- Two-piece windshield; windshield can be removed and dashboard can still be used
- Dust-management system
- Accommodates 4-LED Light Kit (1436-412) or Firebar 3 (1436-856)



1436-538 RED
550 - 1000 & TBX (EXCLUDES ALL ALTERRA)



1436-536 BLACK
550 - 1000 & TBX (EXCLUDES ALL ALTERRA)

WINGUARD 2 WINDSHIELD *

- Attach and remove in seconds — no tools required
- Unique dust management system — an Arctic Cat exclusive
- Multiple windshield heights for drivers of all sizes
- Adjustable angle to optimize wind flow
- RAM® mount ready — fits over 200 RAM accessories. Visit www.rammount.com for the full lineup of RAM accessories
- Screen-printed graphics add style and accent vehicle body graphics



2436-178 BLACK MID HEIGHT
*17 ALTERRA 400 - 700 & TRV (EXCLUDES ALTERRA TRV 500); *16 ALTERRA 400, 450 & 550-700; *15 ALL XR



2436-156 BLACK TALL
*17 ALTERRA 400 - 700 & TRV (EXCLUDES ALTERRA TRV 500); *16 ALTERRA 400, 450 & 550-700; *15 ALL XR

WINDGUARD WINDSHIELDS *

- Protects face, torso and hands from wind, weather and debris on the trail
- Attach and remove in seconds – no tools required
- Built-in beverage holder
- Dust-management system
- Features Quick-Attach System



1436-592 CLEAR

'17 500, 1000, TBX, ALTEERRA 400, 450 & TRV (EXCLUDES MUDPRO, XC 450 & ALTEERRA 550-700); '16 ALTEERRA 400 & 450; '96-'16 150-1000, ALL TRV & TBX (EXCLUDES XR, ALTEERRA 550-700, 366, MUDPRO & XC 450)



1436-590 BLACK



1436-591 RED

HAND GUARDS *

* NOT MOUNTABLE ON HOMOLOGATED ATVS.

AIRCAT HAND GUARDS *

- Protect hands from brush and debris with rugged, contoured plastic
- Includes mounting brackets



1436-375 BLACK

'04-'17 350-1000, XR, ALTEERRA, MUDPRO, ALL TRV & TBX

MIRRORS

WINDSHIELD MIRROR KIT (NOT E-MARKED)

- Compact, yet offers excellent rear view



1436-713

FITS WINDGUARD WINDSHIELDS (EXCLUDES WINDGUARD 2)

DUAL MIRROR KIT (NOT E-MARKED)

- Lightweight, easy to install
- Provides excellent dual rearview vision
- Black powder coating for a long-lasting finish
- Rustproof



1436-510

'04-'17 350-1000, XR, ALTEERRA, MUDPRO, TRV & TBX (EXCLUDES XC 450)

HANDLEBAR END MIRROR (NOT E-MARKED)

- Quick bar-end mounting on most ATVs
- Does not interfere with hand movement
- Vibration-free convex safety lens for ultraclear rearview vision
- Sold individually



1436-507

'05-'17 350-1000, XR, ALTEERRA, MUDPRO, TRV & TBX; '03-'04 250 & 300; '96-'02 FULL SIZE

MIRROR (NOT E-MARKED)

- Compact, yet offers excellent rear view
- Requires Mirror-Mounting Bracket (1436-700)



1436-702

'04-'17 350-1000, XR, ALTEERRA, MUDPRO, ALL TRV & TBX

PACKAGES

WINDSHIELDS

HAND GUARDS

MIRRORS

BUMPERS

PLOWS

WINCHES

BODY & FRAME

UNDERBODY

RACKS

COVERS

CARGO BAGS

HUNTING

COLD-WEATHER
GEAR

TRV

TIGERTRAX

SPRAYERS

MIRROR-MOUNTING BRACKET

- Use for mounting Mirror (1436-702)



1436-700

'04-'17 350-1000, XR, ALTEERRA, MUDPRO, ALL TRV & TBX

BUMPERS *

* NOT MOUNTABLE ON HOMOLOGATED ATVS,
USE BUMPERS ONLY OFF-ROAD

BUMPER – FRONT *

- Wide, steel box plate construction and durable, rust-inhibiting black wrinkle paint provide style and protection
- Easy installation
- Plate construction provides easy mounting of accessory lights



2436-192

'17 ALTEERRA 550-700; '16 500-700 ALTEERRA; '15 ALL XR

BRUSHGUARD BUMPERS *

- Protects grill, rack and lights from brush and debris
- Contoured to fit the front of your Arctic Cat ATV
- Durable protection with rust-inhibiting, powder-coated steel
- Withstands abuse with a burly, heavy-duty 1.5-in. center-tube section
- Ideal for use with Arctic Cat winch kits
- See dealer for additional accessory applications



2436-503

'17 ALTEERRA 550-700; '16 550-700 ALTEERRA; '15 ALL XR



2436-247

'17 ALTEERRA TRV



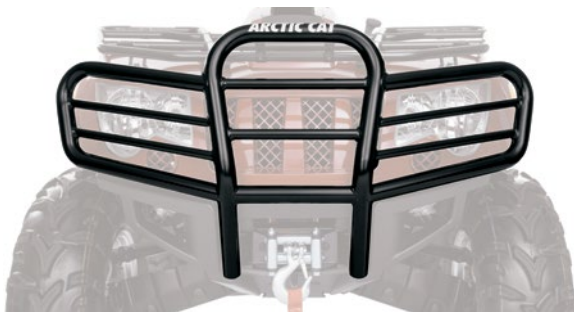
2436-506

'17 ALTEERRA 400 & 450; '16 ALTEERRA 400 & 450



1436-031

'15-'17 1000, TBX & DIESEL (EXCLUDES ALTEIRA TRV); '15-'16 TRV; '10-'14 700-1000, ALL TRV, TBX & DIESEL; '08-'09 500-1000, TRV & TBX



1436-032

'15-'17 500 (EXCLUDES XR, ALTEIRA & TRV); '13-'14 500-550 (EXCLUDES TRV); '10-'12 450-650 (EXCLUDES XC 450); '08 500, 650 & 700



1436-446

'13-'16 400 & 450 (EXCLUDES ALTEIRA); '11-'12 350 & 425

REAR BUMPERS *

- Custom designed for protection of rear frame, muffler, fenders and taillights
- Durable, 1.5-in. dual-tube, powder-coated steel construction
- Four-point mounting to the upper and lower frame for added strength



2436-504

'17 ALTEIRA 550-700; '16 ALTEIRA 550-700; '15 ALL XR



2436-518 BLACK WRINKLE PAINT

'17 ALTEIRA 550-700; '16 ALTEIRA 550-700; '15 ALL XR



2436-248

'17 ALTEIRA TRV



2436-507

'17 ALTEIRA 400 & 450; '16 ALTEIRA 400 & 450

PACKAGES

WINDSHIELDS

HAND GUARDS

MIRRORS

BUMPERS

PLOWS

WINCHES

BODY & FRAME

UNDERBODY

RACKS

COVERS

CARGO BAGS

HUNTING

COLD-WEATHER
GEAR

TRV

TIGERTRAX

SPRAYERS



0436-620
 '10-'15 700 (EXCLUDES XR, ALTERRA, TRV & TBX)



1436-056
 '08-'17 1000 (EXCLUDES TRV)



0436-794
 '06-'16 ALL TRV (EXCLUDES ALTERRA TRV)



1436-190
 '13-'15 400 & 450 (EXCLUDES XC 450 & ALTERRA); '08-'12 350, 366 & 425



0436-757
 '15-'17 500 (EXCLUDES XR, ALTERRA & TRV); '13-'14 500-550 (EXCLUDES MUDPRO & TRV); '10-'12 450-650 (EXCLUDES XC 450, MUDPRO & TRV)

PLOWS *

* BULKY ITEMS ARE NOT ON STOCK - PLEASE ASK FOR LEAD TIME

ATV SPEEDPLOW SYSTEM *

- Turn your Arctic Cat machine into a snow-moving powerhouse with the all-new No-Touch SPEEDPLOW system. You and your machine can move snow faster and easier than ever before. Designed especially for the Arctic Cat chassis, the SPEEDPLOW can be attached, removed and adjusted in seconds from the comfort of the driver's seat. When the snow gets heavy, the SPEEDPLOW gets going — with accessories including snow deflectors, drift cutters, edge markers and curb finders. In just minutes, you can clear sidewalks, plow driveways and free your space from winter's snowy grip. The SPEEDPLOW system requires installation of a Plow Mount Kit, Push Frame, Blade and Winch for use of the complete system.

No-Touch
SPEEDPLOW™

ATV SPEEDPLOW MOUNT KIT *

- Attachment frames have been designed specifically for either the XR or Alterra™ chassis, for easy no-touch installation and removal of the plow. Convenient release handle is mounted near the handlebars — for easy access to remove your plow without leaving the seat of your ATV. Plastic shoe allows for convenient height adjustability of the mount and allows for easier maneuverability of the plow system when on the ground. Self-alignment plates guide the attachment frame during installation. Low-profile integrated design maintains ground clearance when plow is removed.



2436-271
 '17 ALTERRA 550-700 (EXCLUDES ALTERRA 400, 450 & TRV); '16 500-700 ALTERRA; '15 ALL XR

ATV SPEEDPLOW PUSH FRAME KIT *

- This all-new system allows you to install the plow in seconds and remove it without ever leaving the comfort of the driver's seat. Lever action automatically releases the winch hook from the push frame, providing no-touch removal — just release and drive away. Kit features an integrated mid-mounting position that lifts high and installs faster than a front mount while maintaining the performance and stability of an underbody mount. Convenient five-position angle adjustment with the foot pedal design allows you to adjust the angle of your blade without bending over. Shear pin protection helps protect the plow system from damage when hitting a solid object. Powder-coated steel square-tube design provides optimal strength and durability. Rubber shock absorbers offer protection from over-angling and soften the impact during a shear pin break.

No-Touch
SPEEDPlow™



2436-272

*17 ALTERRA 550-700 (EXCLUDES ALTERRA 400, 450 & TRV); *16 ALTERRA 550-700; *15 ALL XR

ATV SPEEDPLOW STEEL PLOW BLADE – 17-IN. HEIGHT *

- Optimized moldboard curve creates increased snow-roll performance and allows for more efficient snow movement
- Compatible with a variety of accessories for added ease of plowing
- Accessories include ready-to-install snow deflectors, drift cutters, edge markers, curb finders and easy-to-remove wearbars
- Stamped plow face adds increased rigidity to the face of the plow
- Two widths to choose from



2436-292 53-IN. BLADE

USE WITH ATV SPEEDPLOW PUSH FRAME KITS



2436-293 66-IN. BLADE

USE WITH ATV SPEEDPLOW PUSH FRAME KITS

ATV SPEEDPLOW POLYETHYLENE PLOW BLADE – 17-IN. HEIGHT *

- Optimized moldboard curve creates increased snow-roll performance and allows for more efficient snow movement
- Compatible with a variety of accessories for added ease of plowing
- Accessories include ready-to-install snow deflectors, drift cutters, edge markers, curb finders and easy-to-remove wearbars
- Featuring a premium lightweight polyethylene blade face that offers long-lasting durability and sheds away snow



2436-294 53-IN. BLADE

USE WITH ATV SPEEDPLOW PUSH FRAME KITS



2436-295 66-IN. BLADE

USE WITH ATV SPEEDPLOW PUSH FRAME KITS

SPEEDPLOW ONE-WAY BLADE ATTACHMENT *

- Converts SPEEDPlow blade into a one-way tapered blade
- Stamped one-piece steel blade attachment rolls snow further than standard SPEEDPlow blade
- Steel frame with durable, glossy black powder-coated finish
- Left-side drift cutter keeps snow contained and moves the snow to the right
- Works with 17-in. tall SPEEDPlow blades
- Available October 2016



2436-296 66-IN. COUNTY BLADE

USE WITH 17-IN. HIGH ATV SPEEDPLOW BLADES

PACKAGES

WINDSHIELDS

HAND GUARDS

MIRRORS

BUMPERS

PLOWS

WINCHES

BODY & FRAME

UNDERBODY

RACKS

COVERS

CARGO BAGS

HUNTING

COLD-WEATHER
GEAR

TRV

TIGERTRAX

SPRAYERS

SPEEDPLOW DRIFT CUTTERS – FOR 17-IN. HEIGHT BLADE *

- Precision fit for SPEEDPLOW blades to keep snow in the plow and aid in controlling snow and cutting cleaner passes
- Does not work with curb guards
- Sold in pairs

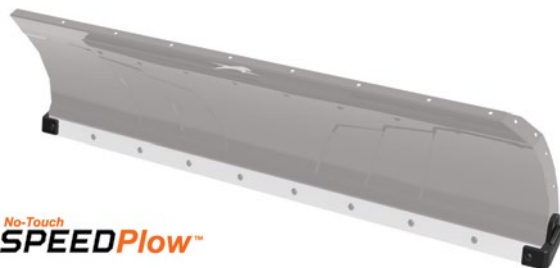


No-Touch
SPEEDPLOW™

2436-276
USE WITH 17-IN. HIGH ATV SPEEDPLOW BLADES

SPEEDPLOW UNIVERSAL BLADE CURB FINDERS *

- Powder-coated, heavy-duty 1/4-in. stamped steel plate protects the plow from damage caused by contact with curbs
- Easy to install on any SPEEDPLOW blade
- Does not work with drift cutters
- Sold in pairs



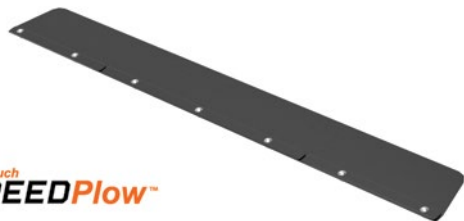
No-Touch
SPEEDPLOW™

2436-275
FITS ALL SPEEDPLOW BLADES

\$56.95 | \$1.13/mo.**

SPEEDPLOW SNOW DEFLECTORS *

- Large rubber barrier increases forward movement of snow and prevents snow from rolling over the top of the blade
- Steel support braces add strength and support to the rubber barrier
- May be custom cut to length



No-Touch
SPEEDPLOW™

2436-308 53-IN. BLADE
USE WITH 53-IN. SPEEDPLOW BLADES

2436-309 66-IN. BLADE
USE WITH 66-IN. SPEEDPLOW BLADES

SPEEDPLOW UNIVERSAL EDGE MARKERS

- One-piece, zinc-plated forged-steel base offers added strength and longevity, and mounts to predetermined mounting location in blade
- Increased visibility with the high-visibility PVC marker, allowing for precision handling of your plow system
- Sold in pairs



2436-277
FITS ALL SPEEDPLOW BLADES

SPEEDPLOW UNIVERSAL TRACK EXTENSION

- Extends push frame to accommodate added height when tracks are installed
- Directly bolts onto ATV and ROV SPEEDPLOW push frames
- No drilling required



2436-311
FITS ALL SPEEDPLOW SYSTEMS

SPEEDPLOW LIMIT SWITCH

- Magnetic sensor prevents winch overdraw and offers increased battery life compared with a non-equipped unit
- Easy-to-install stamped steel mounting bracket
- Adjustable blade height settings
- Maintains the SPEEDPLOW quick-detach feature
- Available October 2016



2436-536
USE WITH ATV SPEEDPLOW; *17 ALTERRA 550 - 700 (EXCLUDES ALTERRA 400, 450 & TRV); *16 ALTERRA 550-700; *15 ALL XR

60-IN. TWO-WAY STEEL TAPERED PLOW BLADE *

- Optimal right- or left-angled plow position performance from a two-way tapered blade
- Tough, high-strength steel construction with 3-in. serviceable wearbar and adjustable skid plates
- Wide 60-in. blades with 16-in. center height and standard snow deflector
- Throws snow farther with blade ends tapering out to 22 in. for increased snow handling
- Requires Plow Push Frame and Mount Kit
- Edge Markers sold separately
- 60-in. blades are not recommended for 450 models and below (excludes SPEEDPlow products)



1436-398 60-IN. BLADE - BLACK

ONE-WAY TAPERED PLOW BLADE *

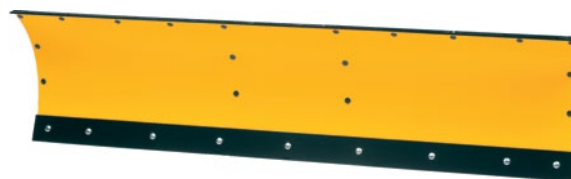
- Unique 16-in. to 26-in. tapered design launches snow up and away
- Deflector flap prevents snow from getting over the blade top
- End plate comes standard for increased snow handling
- Requires Plow Push Frame and Mount Kit
- 60-in. blades are not recommended for 450 models and below (excludes SPEEDPlow products)



0436-360 60-IN. BLADE - YELLOW

POLYETHYLENE PLOW BLADES

- Tough, slippery, lightweight construction from high-density polyethylene over a steel frame
- Available in 50-in.- and 60-in.-wide options with a 16-in. overall height
- Adjustable skid plates
- Requires Plow Push Frame and Mount Kit
- Snow Deflectors, End Plates and Edge Markers sold separately
- 60-in. blades are not recommended for 450 models and below (excludes SPEEDPlow products)



0436-228 50-IN. BLADE - YELLOW

0436-296 60-IN. BLADE - YELLOW

SNOW DEFLECTORS



0436-231 1. SNOW DEFLECTOR

USE WITH 50-IN. STRAIGHT BLADES (EXCLUDES SPEEDPLOW PRODUCTS)

0436-299

USE WITH 60-IN. STRAIGHT BLADES (EXCLUDES SPEEDPLOW PRODUCTS)

0436-232 2. END PLATES

USE WITH 50-IN. & 60-IN. STRAIGHT BLADES (EXCLUDES SPEEDPLOW PRODUCTS)

0541-018 3. EDGE MARKERS

USE WITH ALL NON-SPEEDPLOW BLADES

STANDARD PLOW MOUNT KIT

- Frame mounting for added strength
- Durable heavy-duty steel construction
- The Standard Plow Mount Kit features low-profile mounting to prevent catching on obstacles when plow is not attached
- 2436-170 Mount Kit does not work with TigerTrax installed



2436-170

'17 ALTERRA 550-700 (EXCLUDES ALTERRA 400, 450 & TRV); '16 ALTERRA 550-700; '15 ALL XR

0436-635

'17 550 - 1000, TBX & TRV; '15-'16 550 - 1000, TBX & TRV (EXCLUDES ALTERRA & XR); '13-'14 550-1000, TBX & TRV; '10-'12 550-1000, TBX & TRV (EXCLUDES XC 450)

AC010-012 (1436-191)

350, 400 2X4 & 4X4, 425, 450 (EXCL. XC 450,)

STANDARD PLOW PUSH FRAME KIT

- Strong, heavy-duty steel construction with rust-resistant powder coating
- Five-position blade adjustments with four cutting-edge angle options make adjusting plow angle and cutting-edge angle easier
- Quick-connect system for easy installation and detachment
- Requires Standard Plow Mount Kit and Plow Blade (sold separately)

0436-636

FITS STANDARD PLOW MOUNT (2436-170, 0436-635 & 1436-191)

PACKAGES

WINDSHIELDS

HAND GUARDS

MIRRORS

BUMPERS

PLOWS

WINCHES

BODY & FRAME

UNDERBODY

RACKS

COVERS

CARGO BAGS

HUNTING

COLD-WEATHER
GEAR

TRV

TIGERTRAX

SPRAYERS

QUICK-ATTACH PLOW MOUNT KIT *

- Durable, powder-coated steel construction
- Mounts to frame and front bumper for added strength
- Easy-access, low-profile mounting area



2436-090

'17 1000 & TBX (EXCLUDES ALTERRA TRV); '15-'16 1000, TBX, ALL TRV & MUDPRO (EXCLUDES XR & ALTERRA); '10-'14 700-1000, TBX, ALL TRV & MUDPRO

2436-091

'15-'17 500 (EXCLUDES XR & ALTERRA); '13-'14 500-550 (EXCLUDES TBX & TRV); '10-'12 450-650 (EXCLUDES XC 450, 650 MUDPRO, TBX & TRV)

QUICK-ATTACH PLOW PUSH FRAME KIT

- Heavy-duty steel construction with quick-attach, easy-access features and five-position blade adjustments
- Attaches/detaches in less than 10 seconds
- Requires Quick-Attach Plow Mount Kit and Plow Blade (sold separately)

2436-092

FITS QUICK-ATTACH PLOW MOUNT (2436-090 & 2436-091)

TIGERTRAX PLOW EXTENSION KIT

- Provides required blade clearance when TigerTrax Kit is installed



1436-392

FITS STANDARD PLOW PUSH FRAME KIT (0436-636); EXCLUDES MOUNT KIT (2436-170)

1436-601

FITS QUICK-ATTACH PLOW PUSH FRAME KIT (2436-092)

PLOW KIT DELUXE - STANDARD FRAME

- Kit includes standard frame and mounting, yellow blade (127cm or 152cm depending on kit number), end plates, edge markers and deflector (127cm or 152cm depending on kit number). powder-coated steel construction
- powder-coated steel construction



AC010-002 STANDARD KIT 152CM

ALL ATV 500 - 1000 (EXCL. ALTERRA TRV, PROWLER & WILDCAT)

AC010-013 STANDARD KIT 127CM

350, 400 2X4 & 4X4, 425, 450 (EXCL. XC 450)

AC010-140 STANDARD KIT 127CM

XC 450 (WINCH AND WINCH MOUNTING NEEDS TO BE ORDERED SEPERATELY)

PLOW KIT DELUXE - QUICK ATTACH

- Durable, powder-coated steel construction
- Kit includes quick attach frame and mounting, yellow blade (127cm or 152cm depending on kit number), end plates, edge markers and deflector (127cm or 152cm depending on kit number).



AC010-077 STANDARD KIT 152CM

500-1000 (EXCL. ALTERRA FIS & TRV; PROWLER & WILDCAT)

WINCHES

Our winches are designed to help you make the most of your machine. In fact, we pair our winches and machines to create the perfect match for the performance, durability and reliability you need. All Prowler and HDX winches share these common features:

- Arctic Cat/WARN designed and engineered
- Custom-fit wire harnesses and connections
- All-metal gear end housing and mechanical brake
- Convenient patented handlebar-mounted rocker switch
- Remote-ready wiring harness for optional remote upgrade kits

3,000-LB. PROVANTAGE WINCH KIT

- Includes 50 ft. of durable wire cable
- Powerful permanent magnet motor with 3,000 lbs. of pulling capacity
- Convenient patented handlebar-mounted rocker switch
- Plow roller fairlead with larger diameter bottom roller for reduced rope stress



2436-527

'17 ALTEERRA 550 - 700 & ALTEERRA TRV; '16 ALTEERRA 550-700; '15 ALL XR

2436-135

'13-'17 500-1000 & TRV (EXCLUDES XR, ALTEERRA, ALTEERRA TRV, DIESEL & TBX); '10-'12 450-1000 & TRV (EXCLUDES XC 450, 700 DIESEL & TBX)

2436-097

'07-'17 TBX & DIESEL (EXCLUDES XR & ALTEERRA)

3,000-LB. PROVANTAGE WINCH KIT WITH SYNTHETIC ROPE

- Includes 50 ft. of market-leading 3/16-in. Spydura synthetic rope
- Powerful permanent magnet motor with 3,000 lbs. of pulling capacity
- All-metal gear end housing and mechanical brake
- Plow roller fairlead with larger diameter bottom roller for reduced rope stress



2436-528

'17 ALTEERRA 550 - 700 & ALTEERRA TRV; '16 ALTEERRA 550-700; '15 ALL XR

2436-136

'13-'17 500-1000 & TRV (EXCLUDES XR, ALTEERRA, ALTEERRA TRV, DIESEL & TBX); '10-'12 450-1000 & TRV (EXCLUDES XC 450, 700 DIESEL & TBX)

2436-098

'07-'17 TBX & DIESEL (EXCLUDES XR & ALTEERRA)

2,500-LB. PROVANTAGE WINCH KIT

- Includes 50 ft. of durable wire cable
- Powerful permanent magnet motor with 2,500 lbs. of pulling capacity
- Plow roller fairlead with larger diameter bottom roller for reduced rope stress



2436-100

'17 ALTEERRA 400-450; '16 ALTEERRA 400-450; '13-'15 400 & 450 (EXCLUDES XR); '08-'12 350, 366 & 425

PACKAGES

WINDSHIELDS

HAND GUARDS

MIRRORS

BUMPERS

PLOWS

WINCHES

BODY & FRAME

UNDERBODY

RACKS

COVERS

CARGO BAGS

HUNTING

COLD-WEATHER GEAR

TRV

TIGERTRAX

SPRAYERS

2,500-LB. PROVANTAGE WINCH KIT WITH SYNTHETIC ROPE

- Includes 50 ft. of market-leading 3/16-in. Spydura synthetic rope
- Powerful permanent magnet motor with 2,500 lbs. of pulling capacity
- All-metal gear end housing and mechanical brake
- Plow roller fairlead with larger diameter bottom roller for reduced rope stress



2436-101

'17 ALTERRA 400-450; '16 ALTERRA 400-450; '13-'15 400 & 450 (EXCLUDES XR); '08-'12 350, 366 & 425

2,500-LB. UNIVERSAL WINCH KIT

Designed to carrier winch for XC 450; Durable, heavy-duty stell construction; Carrier needed to install snowplow kit AC010-140 on XC 450



1436-187
UNIVERSAL

WINCH CARRIER XC 450

- Designed to carrier winch for XC 450;
- Durable, heavy-duty stell construction;
- Carrier needed to install snowplow kit AC010-140 on XC 450



AC008-813
XC 450

WIRELESS REMOTE UPGRADE KIT – ALL VEHICLES

- Works with all Arctic Cat/WARN ProVantage Winch Kits
- Easy plug-and-play installation
- 50-ft. operation radius
- Automatic system shut-off



2436-110

ALL ARCTIC CAT/WARN PROVANTAGE WINCH KITS

CORDED REMOTE UPGRADE KIT – ALL VEHICLES

- Works with all Arctic Cat/WARN ProVantage Winch Kits
- Easy plug-and-play installation
- Includes remote control with 10 ft. of cord, storage bag, socket and wiring



2436-114

ALL ARCTIC CAT/WARN PROVANTAGE WINCH KITS

STANDARD ROLLER FAIRLEAD

- For use with all Arctic Cat ATVs, Wildcats, and 2014 and earlier Prowler models



0441-403

ALL ATVS; '14-'16 WILDCAT TRAIL; '15-'16 WILDCAT SPORT; '14 & OLDER PROWLERS; '11-'15 HDX

PLOW ROLLER FAIRLEAD

- Plow roller fairlead with larger diameter bottom roller for reduced rope stress



2441-931

ALL ATVS; '14-'16 WILDCAT TRAIL; '15-'16 WILDCAT SPORT; '14 & OLDER PROWLERS; '11-'15 HDX

HAWSE FAIRLEAD

- Double-coated Hawse Fairlead reduces rope wear and improves corrosion resistance



2441-932

ALL ATVS; '14-'16 WILDCAT TRAIL; '15-'16 WILDCAT SPORT; '14 & OLDER PROWLERS; '11-'15 HDX

WINCH ACCESSORIES KIT

- Doubles the power of your winch with the handy pulley block
- Two clevis shackles provide secure rigging
- Includes two sturdy 7,000-lb. tow straps
- Packs conveniently into the rugged Cordura nylon case



1436-600

UNIVERSAL

ATV SYNTHETIC WINCH ROPE

- Rope does not burr like steel cable
- Increased strength over steel cable
- Better fatigue resistance than steel cable



0436-962

USE WITH ALUMINUM DRUM ARCTIC CAT/WARN 2,500-LB. & 3,000-LB. WINCHES

BODY & FRAME

FENDER EXTENSIONS

- Adds coverage in wet, muddy, off-trail conditions
- Two coverage options available upon installation: 2.5 in. or 5 in.
- Helps prevent snow, slush, mud and water from hitting driver/passenger when tracks are installed
- Durable, sandblasted black finish, HMWPE construction
- Adds bold style and custom appearance
- Ideal when tracks are installed



1436-351 FRONT

'17 1000, TBX (EXCLUDES ALTERRA TRV); '15-'16 1000, MUDPRO, ALL TRV & TBX (EXCLUDES XR & ALTERRA); '10-'14 700-1000, MUDPRO, ALL TRV & TBX; '05-'09 500-1000 (EXCEPT '05 TRV)

1436-352 REAR

'17 1000, TBX (EXCLUDES ALTERRA TRV); '15-'16 1000, MUDPRO, ALL TRV & TBX (EXCLUDES XR & ALTERRA); '10-'14 700-1000, MUDPRO, ALL TRV & TBX; '05-'09 500-1000 (EXCEPT '05 TRV)

RECOIL KIT

- Everything needed to add complete backup recoil starting option to electric-start engines
- Essential for backcountry riders
- Includes recoil assembly and hardware
- NOTE: Included side panel is not applicable for some uses. Side panel is not included in the 0837-008 kit.



1436-002

'15-'17 TBX (EXCLUDES XR & ALTERRA); '10-'14 550-700 H1 FIS & TBX (EXCLUDES TRV)

1436-007

'07-'16 650 & 700 H1 TRV (EXCLUDES XR & ALTERRA)

1436-008

'13-'15 400 (EXCLUDES XR & ALTERRA); '08-'12 350 & 366

PACKAGES

WINDSHIELDS

HAND GUARDS

MIRRORS

BUMPERS

PLOWS

WINCHES

BODY & FRAME

UNDERBODY

RACKS

COVERS

CARGO BAGS

HUNTING

COLD-WEATHER
GEAR

TRV

TIGERTRAX

SPRAYERS

UNDERBODY

SKID PLATE KIT & A-ARM GUARDS

- Easy to install and contoured specifically for Arctic Cat ATVs
- Offers full-coverage protection for front and rear drive components
- Made of highly durable 8-gauge 5052 aluminum
- Aluminum provides greater protection against damage and corrosion
- Alterra versions available September 2016



1. 2436-510 SKID PLATE KIT

'17 ALTERRA 550-700 (EXCLUDES 500, ALTERRA 400, 450 & TRV); '16 ALTERRA 550-700; '15 ALL XR

1. 1436-616 SKID PLATE KIT

'13-'17 500-700 (EXCLUDES ALL TRV, TBX, XR & ALTERRA); '10-'12 450-700 (EXCLUDES XC 450, ALL TRV & TBX)

1. 1436-658 SKID PLATE KIT

'07-'17 TBX; '06-'16 ALL TRV (EXCLUDES XR, ALTERRA & ALTERRA TRV)

2. 2436-508 A-ARM GUARDS – FRONT

'17 ALTERRA 550-700 (EXCLUDES 500, ALTERRA 400, 450 & TRV); '16 ALTERRA 550-700; '15 ALL XR

2. 1436-617 A-ARM GUARDS – FRONT

'15-'17 1000 (EXCLUDES XR & ALTERRA); '13-'14 500-1000; '10-'12 450-1000 (EXCLUDES XC 450)

3. 2436-509 A-ARM GUARDS – REAR

'17 ALTERRA 550-700 (EXCLUDES 500, ALTERRA 400, 450 & TRV); '16 ALTERRA 550-700; '15 ALL XR

3. 1436-964 A-ARM GUARDS – REAR

'15-'17 1000 (EXCLUDES XR & ALTERRA); '13-'14 500-1000; '10-'12 450-1000 (EXCLUDES XC 450)

RACKS

RACK EXTENSION

- Maximize rack capacity with a 3-in. or 6-in. steel rack extension
- Featuring rubber bumpers to help protect cargo
- Includes manual attachment system
- Upgradable to the accessory SpeedLock™ attachment system



2436-119 3 IN.

'17 ALTERRA 550-700 & TRV; '16 ALTERRA (EXCLUDES ALTERRA 400, 450 & ALL TRV); '15 ALL XR



2436-120 6 IN.

'17 ALTERRA 550-700 & TRV; '16 ALTERRA (EXCLUDES ALTERRA 400, 450 & ALL TRV); '15 ALL XR

ATV DELUXE RACK EXTENSIONS

- Maximizes rack capacity by adding 5 in. of height in front
- Prevents scratches, rattling and rusting with durable molded-composite posts



1436-395 FRONT

'17 500, 1000 & TBX (EXCLUDES ALTEIRA 400, 500, 700 & TRV); '15-'16 500, 1000, ALL TRV & TBX (EXCLUDES XR & ALTEIRA); '13-'14 500-1000, TRV & TBX; '08-'12 450-1000, TRV & TBX



1436-396 REAR

'15-'17 500 & 1000 (EXCLUDES XR, ALTEIRA, TRV & TBX); '13-'14 500-1000 (EXCLUDES TRV & TBX); '08-'12 450-1000 (EXCLUDES TRV & TBX)

FRONT RACK EXTENSION

- Extends the edges of the rack to keep items contained
- Sturdy 3/4 in. steel tubing provides a rigid structure for securing gear and tie-downs
- Tough, long-lasting powdercoat wrinkle finish
- Easy installation



2436-537

'17 ALTEIRA 400 & 500; '16 ALTEIRA 400 & 450

RACK RAIL

- Fits front or rear rack for additional attachment point
- Rail helps hold oddly shaped items
- Cast aluminum for added strength



2436-118

'17 ALTEIRA 550-700 & TRV (EXCLUDES ALTEIRA 400 & 500); '16 ALTEIRA (EXCLUDES ALTEIRA 400 & 450); '15 ALL XR

SPEEDLOCK

- Drop-in system quickly attaches with easy-to-use thumb locks
- Durable cast-aluminum components with one-click unlocking for fast removal



2436-501

'17 ALTEIRA 550-700 & TRV (EXCLUDES ALTEIRA 400 & 500); '16 ALTEIRA (EXCLUDES ALTEIRA 400 & 450); '15 ALL XR

SPEEDLOCK COVER

- Constructed of supple Duro 60 silica rubber
- Retains mechanical mobility of SpeedLock in severe cold weather conditions



2436-540

SPEEDLOCK (2436-501, 2436-121)

PACKAGES

WINDSHIELDS

HAND GUARDS

MIRRORS

BUMPERS

PLOWS

WINCHES

BODY & FRAME

UNDERBODY

RACKS

COVERS

CARGO BAGS

HUNTING

COLD-WEATHER GEAR

TRV

TIGERTRAX

SPRAYERS

SPEEDRACK® II MANUAL ATTACHMENT SYSTEM

- Replacement hardware for SpeedRack II manually attached accessories



2441-951 SLOTTED WASHER KIT

'17 ALTERRA 550-700 & TRV (EXCLUDES ALTERRA 400 & 500); '16 ALTERRA (EXCLUDES ALTERRA 400 & 450); '15 ALL XR



2436-211 MANUAL ATTACHMENT KIT

'17 ALTERRA 550-700 & TRV (EXCLUDES ALTERRA 400 & 500); '16 ALTERRA (EXCLUDES ALTERRA 400 & 450); '15 ALL XR

TOOL HOLDERS

- Adjustable rubber-lined hooks offer scratch-free tool anchoring
- Secure Velcro strapping allows for versatility
- Universal mount for both front and rear tube-style racks
- Sold in pairs



0436-297

UNIVERSAL (WORKS ON XR & ALTERRA) (EXCLUDES '17 ALTERRA 400 & 500; '16 ALTERRA 400 & 450)

PIN KIT

- Five pins to secure any SpeedRack accessory
- '05-'17 SpeedRack models are not supplied with pins



0436-759

5-PIN KIT, '05-'17 SPEEDRACK MODELS ARE NOT SUPPLIED WITH PINS (EXCLUDES XR & ALTERRA)

SPEEDSERT INSERT

- Converts vertical SpeedRack pockets to M6x1.0
- Molded inserts available for custom mounting of additional items
- Contoured to fit vertical SpeedRack pockets
- Use with M6x1.0 fasteners (not included)
- Sold individually



1441-993

'05-'17 SPEEDRACK (EXCLUDES XR & ALTERRA)

SPEEDRACK RACK BASKET

- Heavy-duty 0.75-in. steel square tubing perimeter for durability
- Open-mesh metal bottom won't collect dirt and is perfect for hauling tools and gear
- Snag-free round-corner plates
- Works on front or rear SpeedRack
- SpeedRack pins included



1436-123

'05-'17 SPEEDRACK (FRONT OR REAR — EXCLUDES XR & ALTERRA)

SPEEDRACK BACKREST

- Offers excellent, fully padded lumbar support
- Adjustable mounting positions for custom comfort
- SpeedLock attachment accessories included



2436-143

'17 ALTERRA 550-700 (EXCLUDES ALTERRA 400, 450 & TRV); '16 ALTERRA 550-700 (EXCLUDES ALTERRA 400, 450 & TRV); '15 ALL XR

SPEEDRACK BACKREST

- Offers excellent, fully padded lumbar support
- Adjustable mounting positions for custom comfort
- SpeedRack pins included



1436-050

'05-'17 SPEEDRACK (EXCLUDES XR & ALTERRA)

CARGO BOX

- SpeedRack-integrated flush design installs over front or rear rack
- Retains multiple top tie-down options
- Durable polyethylene molded base with incorporated hinged lid
- Lid folds forward away from the vehicle
- Both boxes feature removable lids
- Front Cargo Box features injection-molded rubber straps for secure lid fastening
- Rear Cargo Box features a locking latch
- Requires two additional SpeedLocks (2436-501) per cargo box, sold separately
- Available September 2016



2436-538 FRONT

(REQUIRES 2 SPEEDLOCKS 2436-501); '17 ALTERRA 550-700, ALTERRA TRV (FRONT ONLY); '16 ALTERRA 550-700 (EXCLUDES ALTERRA 400 & 450); ALL '15 XR

2436-144 REAR

(REQUIRES 2 SPEEDLOCKS 2436-501); '17 ALTERRA 550-700 (REAR ONLY) (EXCLUDES ALTERRA 400, 450 & TRV); '16 ALTERRA 550-700 (REAR ONLY) (EXCLUDES ALTERRA 400 & 450); '15 ALL XR

CARGO BOX

- Weather-resistant protection for all your gear
- Versatile front or rear hinges make for easy-access options
- Top can be removed, turning the bottom into a tray
- Tough, molded construction
- Optional Seal Kit (0436-497)
- 33 in. L x 18 in. W x 9 in. H



0436-454

(REQUIRES QR MOUNT 1436-287); '15-'17 500 & 1000 (EXCLUDES XR, ALTERRA, TRV & TBX); '13-'14 500-1000 (EXCLUDES TRV & TBX); '08-'12 450-1000 (EXCLUDES TRV & TBX)

CARGO BOX SEAL KIT



0436-497

FITS CARGO BOX (0436-454)

CARGO BOX QUICK-RELEASE MOUNT KIT



1436-287

'15-'17 500 & 1000 (EXCLUDES XR, ALTERRA, TRV & TBX); '13-'14 500-1000 (EXCLUDES TRV & TBX); '08-'12 450-1000 (EXCLUDES TRV & TBX)

MOLDED RACK TRAY

- Lightweight, quick-install front tray
- Provides generous cargo space for bulky items, including chainsaws
- Can be used with Arctic Cat windshields
- Includes template for creating custom dividers
- Uses four included Speedsert Inserts (1441-993)



1436-906

'05-'17 SPEEDRACK (EXCLUDES XR & ALTERRA)

PACKAGES

WINDSHIELDS

HAND GUARDS

MIRRORS

BUMPERS

PLOWS

WINCHES

BODY & FRAME

UNDERBODY

RACKS

COVERS

CARGO BAGS

HUNTING

COLD-WEATHER
GEAR

TRV

TIGERTRAX

SPRAYERS

COVERS

TRAILERABLE COVER

- Protective, water-resistant, urethane-coated, 600-denier polyester
- Secure, heavy-duty straps at front, center and rear
- Fast, easy-to-use locking buckles
- Fits with front and rear bumpers installed



2436-189

'17 ALTERRA 550-700 WITH WINDSHIELD (EXCLUDES ALTERRA 400, 450 & TRV); '16 ALTERRA WITH WINDSHIELD (EXCLUDES ALTERRA 400 & 450); '15 XR WITH WINDSHIELD

2436-500

'17 ALTERRA 550-700 (EXCLUDES ALTERRA 400, 450 & TRV); '16 ALTERRA 550-700 (EXCLUDES ALTERRA 400, 450 & TRV); '15 ALL XR

2436-188

'15 ALL XR

1436-091

'15-'17 500 & 1000 (EXCLUDES XR, ALTERRA, MUDPRO & TRV); '13-'14 500-1000 (EXCLUDES MUDPRO, TRV & TBX); '05-'12 400-1000 (EXCLUDES MUDPRO, TRV & TBX)

1436-371

(WITH WINDSHIELD); '15-'17 500 & 1000 (EXCLUDES XR, ALTERRA, MUDPRO & TRV); '13-'14 500-1000 (EXCLUDES MUDPRO, TRV & TBX); '05-'12 400-1000 (EXCLUDES MUDPRO, TRV & TBX)

2436-529

'09-'17 TRV (INCLUDES ALTERRA TRV) (EXCLUDES LIMITED & CRUISER)

1436-265

'08-'15 TRV LIMITED & CRUISER

1436-092

'02-'17 TBX; '02-'08 TRV & DIESEL

1436-512

10-'17 MUDPRO 1000

1436-568

'09-'17 650-700 MUDPRO

STORAGE COVER

- Wards off sun, moisture and dust with urethane-coated, 150-denier polyester
- Snug, custom fit from elastic stretch cords
- Not for trailering



1436-087

'17 500, ALTERRA 550-700 (EXCLUDES ALTERRA 400, 450 & TRV); '16 ALTERRA; '13-'16 500-1000; '15 ALL XR; '05-'12 400-1000 (EXCLUDES ALL MUDPRO, TRV & TBX)

1436-088

'17 ALTERRA 400 & 500; '16 ALTERRA 400 & 450; '13-'16 300-450; '06-'12 250-425

1436-248

'09-'17 TRV (EXCLUDES LIMITED & CRUISER)

1436-263

'08-'15 TRV LIMITED & CRUISER

1436-089

'02-'17 TBX; '02-'08 TRV & DIESEL

CARGO BAGS

CENTER BAG – FRONT

- Semi-rigid bag integrated with side-stiffening components for anti-sag construction
- Sleek compression-molded lid adds style to your machine
- Mudguard zippers keep the contents clean and free of outside elements
- 6.5-in. height accommodates a variety of on-the-go items



2436-177 FRONT

'17 ALTERRA 550-700 & TRV (EXCLUDES ALTERRA 400 & 450); '16 ALTERRA (EXCLUDES ALTERRA 400 & 450); '15 XR

CENTER BAG – REAR

- Semi-rigid bag integrated with side-stiffening components for anti-sag construction
- Sleek compression-molded lid adds style to your machine
- Mudguard zippers keep the contents clean and free of outside elements
- 11-in. height is large enough for medium-to-large items, like helmets and other gear



2436-185 REAR

'17 ALTERRA 550-700 & TRV* (*PLEASE NOTE TRV 2ND PASSENGER SEAT MUST BE REMOVED) (EXCLUDES ALTERRA 400 & 450); '16 ALTERRA (EXCLUDES ALTERRA 400 & 450); '15 XR

SIDE BAGS

- Semi-rigid bag integrated with side-stiffening components for anti-sag construction
- Sleek compression-molded lid adds style to your machine
- Mudguard zippers keep the contents clean and free of outside elements
- Works with center bags (2436-177, 2436-185) or as stand-alone



2436-184

'17 ALTERRA 550-700 & TRV* (*PLEASE NOTE TRV 2ND PASSENGER SEAT MUST BE REMOVED) (EXCLUDES ALTERRA 400 & 500); '16 ALTERRA (EXCLUDES ALTERRA 400 & 450); '15 XR

RACK BAG

- Durable, ballistic nylon with reinforced bottom
- Water-resistant zippers
- Features three large openings with two removable dividers
- Easy Velcro attachment



2436-176

'17 ALTERRA 550-700 & TRV (EXCLUDES ALTERRA 400 & 500); '16 ALTERRA (EXCLUDES ALTERRA 400 & 450); '15 XR

RACK BAGS

- Durable ballistic nylon with reinforced bottom
- Added support from the no-sag, closed-cell-foam structure
- Water-resistant zippers and convenient carrying handle
- Rear bag features top stretch cord to secure items, plus mesh top-opening pockets for easy access to added storage



1436-083 FRONT

'17 500, 1000 & TBX (EXCLUDES ALTERRA 400, 450, 700 & TRV); '15-'16 500, 1000, ALL TRV & TBX (EXCLUDES XR, ALTERRA & MUDPRO); '13-'14 500-1000, ALL TRV & TBX (EXCLUDES MUDPRO); '05-'12 450-1000, TRV & TBX (EXCLUDES '05 TRV, MUDPRO & XC 450); '06-'08 400

ZIPPERLESS RACK BAGS

- Cam-lock attachment
- Durable HDPE wall stiffeners
- Dual side access
- No zipper to attract mud or dirt
- Available September 2016



2436-531

'17 ALTERRA 550-700 & TRV (EXCLUDES ALTERRA 400 & 450); '16 ALTERRA (EXCLUDES ALTERRA 400 & 450); '15 XR

PACKAGES

WINDSHIELDS

HAND GUARDS

MIRRORS

BUMPER

PLOW

WINCH

BODY & FRAME

UNDERBODY

RACKS

COVERS

CARGO BAGS

HUNTING

COLD-WEATHER
GEAR

TRV

TIGERTRAX

SPRAYERS



ZIPPERLESS RACK BAGS

- Aluminum inner frame and compression-molded lid
- Stretch cords on top provide added cargo capacity
- Convenient carrying handle
- No zipper to attract mud or dirt



1436-511 FRONT

'17 500, 1000 & TBX (EXCLUDES ALTERRA 400, 500, 700 & TRV); '15-'16 500, 1000, ALL TRV & TBX (EXCLUDES XR, ALTERRA & MUDPRO); '13-'14 500-1000, ALL TRV & TBX (EXCLUDES MUDPRO); '05-'12 450-1000, ALL TRV & TBX (EXCLUDES '05 TRV, MUDPRO & XC 450); '06-'08 400

1436-577 REAR

'15-'17 500, 1000 & MUDPRO (EXCLUDES XR, ALTERRA, TRV & TBX); '13-'14 500-1000 & MUDPRO (EXCLUDES TRV & TBX); '05-'12 450-1000 & MUDPRO (EXCLUDES TRV & TBX)

FENDER BAG

- Compression-molded body with hinged magnetic lid
- Magnetic lid closure provides secure storage without straps
- Snap-in insert for added organization of small items
- Rack-attachment hook installs and detaches in seconds
- Available October 2016



2436-515

'17 ALTERRA 550-700 (EXCLUDES ALTERRA 400, 450 & TRV); '16 ALTERRA 550-700 (EXCLUDES ALTERRA 400 & 450); '15 ALL XR

FENDER BAG

- Clips quickly to rear fender
- Easy-access, top-opening pocket
- Dual beverage holders



1436-085

'17 500 & 1000 (EXCLUDES ALTERRA 400, 500, 700, TRV & TBX); '00-'16 FULL SIZE (EXCLUDES XR, ALTERRA & TBX)

HUNTING *

Know your local and state laws for gun transport

RACK/GUN MOUNT

- Vertical mount attachment for front or rear rack
- Soft rubber fins grip and cushion cargo
- SpeedRack pins included



SPEEDRACK

0436-828

ATVS WITH SPEEDRACK (EXCLUDES PLASTIC RACK XR & ALTERRA MODELS)

DUAL GUN/UTILITY MOUNT

- Adjustable dual-utility holders
- Securely holds cargo
- Held in place by four SpeedRack pins (included)
- Radius reducers for smaller tools



SPEEDRACK

1436-179

ATVS WITH SPEEDRACK (EXCLUDES PLASTIC RACK XR & ALTERRA MODELS)

GUN HOLSTER

- Lightweight, durable HDPE plastic quick-draw holder
- Injection-molded lower mount
- Works with most soft-sided cases
- Easy installation with SpeedBuckle attachment accessory

NEW



2436-533

'17 ALTERRA 550-700 (EXCLUDES ALTERRA 400, 450 & TRV); '16 ALTERRA 550-700 (EXCLUDES ALTERRA 400 & 450); '15 ALL XR

GUN SCABBARD KIT

- Kit includes Deluxe Gun Scabbard (0436-445)
- Gun Scabbard Mount (0436-705) can be purchased separately



1436-656

'08-'17 SPEEDRACK MODELS (EXCLUDES XR, ALTERRA, TBX & TRV); TRV ACCESSORY RACK (1436-397) (EXCLUDES '17 TRV) ACCOMMODATES 0436-445 & 1436-384 SCABBARDS

- Kit includes Clamshell Gun Scabbard (1436-384) and mount (2436-321)



2436-532 SCABBARD & MOUNT

'17 ALTERRA 550-700 (EXCLUDES ALTERRA 400, 450 & TRV); '16 ALTERRA 550-700 (EXCLUDES ALTERRA 400 & 450); '15 ALL XR

GUN SCABBARD MOUNT

- Adjustable for both right- or left-side mounting
- Bolts to rear rack with included hardware
- Accommodates Clamshell Gun Scabbard (1436-384) and Deluxe Gun Scabbard (0436-445), sold separately



0436-705

'08-'17 SPEEDRACK MODELS (EXCLUDES XR, ALTERRA, TBX & TRV); TRV ACCESSORY RACK (1436-397) (EXCLUDES '17 TRV) ACCOMMODATES 0436-445 & 1436-384 SCABBARDS



2436-321

'17 ALTERRA 550-700 (EXCLUDES ALTERRA 400, 450 & TRV); '16 ALTERRA 550-700 (EXCLUDES ALTERRA 400 & 450); '15 ALL XR; WORKS WITH GUN SCABBARD (1436-384) ONLY

CLAMSHELL GUN SCABBARD & CASE

- Removable internal gun case for additional transport options
- Tough, high-density polyurethane outer shell
- Carrying handle fits both left- and right-handed guns
- Accommodates guns up to 51 in. total length, guns with pistol grips and guns with scopes up to 60 mm



1436-384

UNIVERSAL – SCABBARD & CASE ONLY

PACKAGES

WINDSHIELDS

HAND GUARDS

MIRRORS

BUMPER

PLOW

WINCH

BODY & FRAME

UNDERBODY

RACKS

COVERS

CARGO BAGS

HUNTING

COLD-WEATHER
GEAR

TRV

TIGERTRAX

SPRAYERS

COLD-WEATHER GEAR

ATV TIRE CHAINS

- Gives maximum traction on snow and ice
- Made from hardened steel with a grippy V-bar design
- Easy-attach, secure, solid fit
- Two sizes available
- Sold in pairs
- For use on rear tires only



0436-026 SIZE B
24-IN. & 25-IN. TIRES (REAR)

0436-027 SIZE C
25-IN. & 26-IN. TIRES (REAR)

REAR HAND WARMERS – TRV

- Includes everything needed to upgrade '06-'15 TRV models to the "Cruiser-style" rear handlebar heaters for added passenger comfort
- Convenient control switch



1436-272
'06-'16 ALL TRV – PASSENGER (EXCLUDES ALTERRA TRV)

STANDARD HANDLEBAR/THUMB WARMERS

- Offers all-day warmth to hands and thumbs
- Easy-to-install kit with three-position (high/low/off) toggle switch
- Secure molded connectors and replacement grips
- Requires Grip-It Glue (0441-510)



0436-352
'96-'17 FULL-SIZE MODELS

DELUXE HANDLEBAR/THUMB WARMERS

- All the features of the Standard Handlebar/Thumb Warmers plus a pod-mounted, three-position rocker switch and easy-install wiring
- Requires Grip-It Glue (0441-510)



'13-'17 450-1000, ALL XR, ALL ALTERRA, ALL TRV & TBX (EXCLUDES XC 450); '06-'12 450-1000, TBX & TRV (EXCLUDES XC 450); '06-'08 400 (EXCLUDES 400 VP)

GRIP-IT GLUE

- Specially formulated for applying grips to recreational vehicles
- Bonds up to 12 sets of grips



0441-510 1 OZ.
REQUIRED FOR HANDLEBAR GRIP INSTALLATION

ENGINE BLOCK HEATER

- Makes cold-weather starting smoother
- Prewarms liquid-cooled engines with 375 watts of power
- Incorporated thermal switch prevents overheating and is UL®- and CSA-approved



1436-432
'13-'17 550-700 LIQUID-COOLED; '96-'12 500-700 LIQUID-COOLED (EXCLUDES 650 V2); '07-'15 DIESEL

HANDLEBAR MUFFS

- Water- and wind-resistant nylon outer
- Easy-attach Velcro straps with an elastic grip strap
- Not mountable with mirrors.



1436-562
'96-'17 FULL SIZE

TRV

TRV SADDLEBAGS

- Durable, UV-stable vinyl bag won't break down in sunlight
- Lightweight with carbon-fiber pattern
- Lends ample storage, even with two riders



1436-262

'06-'16 TRV (EXCLUDES LIMITED, CRUISER & ALTERRA TRV)

TRV EXTENDED REAR RACK

- Adds rear storage/carrying capacity to TRV models without a rear rack



1436-230

'15 TRV 500; '14 TRV 400; '13 TRV 400 & 500 CORE; '06-'08 TRV; (EXCLUDES ALTERRA TRV)

TRV BOX ATTACHMENT

- Tilt-assisted lift with 200-lb. capacity
- Durable, impact-resistant polyethylene tilt box
- Sturdy steel attachment frame
- Multiple tie-down options
- Flat-top design
- Available late September 2016



2436-520

'17 ALTERRA TRV (EXCLUDES PAST MODEL TRV)

TRV BOX ATTACHMENT

- Adds a pickup-style box to TRV or diesel models by using a few quick-attach pins
- Easy-loading flip tailgate
- Side rails help prevent load from falling out
- NOTE: '09-'16 models require removal of rear rack cover for installation



0436-827

'06-'16 ALL TRV & DIESEL

TRV REAR RACK KIT

- Transforms your TRV into a versatile work machine
- Allows for the addition of top-mounted SpeedRack accessories
- 39 in. x 22 in.



1436-397

'06-'16 ALL TRV (REAR)

DIESEL/TRV SEAT KIT

- Converts your diesel model to a Two Rider Vehicle (TRV) with a couple of pins



1436-028

'06-'15 DIESEL

ATV

PACKAGES

WINDSHIELDS

HAND GUARDS

MIRRORS

BUMPERS

PLOWS

WINCHES

BODY & FRAME

UNDERBODY

RACKS

COVERS

CARGO BAGS

HUNTING

COLD-WEATHER
GEAR

TRV

TIGERTRAX

SPRAYERS

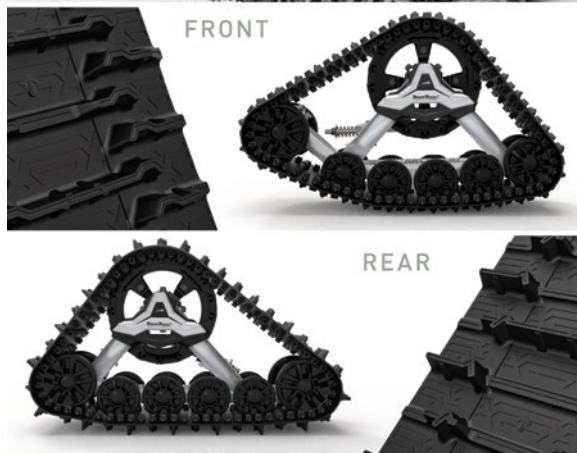
TIGERTRAX

ATV TIGERTRAX 2

- If you're looking for the next level in performance, the Arctic Cat team has delivered! Building on the tried-and-true original TigerTrax system, we have brought you the next evolution in performance all-season tracks. Custom fit and optimized for your Arctic Cat, the TigerTrax 2 will take you farther and allow you to climb higher. It's the most terrain-capable, all-season ATV track system available today. Improved flotation, increased ground clearance, optimized frame geometry, aggressive track design and significant increase in ground traction will give you the edge in deep snow, sand, swamps and the nastiest terrain. Simply stated, when there is terrain to be conquered and when you simply just need to get there, TigerTrax 2 will take you there. NOTE: Requires Track Kit, Mount Kit and Clutch Kit, sold separately. Clutch Kit not required for XR, Alterra and TRV 1000.

ALL-SEASON ATV TRACK KIT

TIGERTRAX²



1436-881

'17 ALTERRA 550-1000 (INCLUDES TRV); '16 ALTERRA 550-700; '15 550-700 XR, TBX & 550-1000 TRV; '08-'16 1000 (EXCLUDES MUDPRO); '07-'14 550-700 (EXCLUDES MUDPRO & DIESEL)

MOUNTING BRACKETS



2436-530

'16 550-700 ALTERRA; '15 550-700 XR

2436-539

'17 ALTERRA TRV (EXCLUDES ALTERRA TRV 500)

2436-562

'17 ALTERRA 550-700 (EXCLUDES ALTERRA TRV)

1436-915

'08-'16 1000, TBX & 550-1000 TRV (EXCLUDES XR & MUDPRO); '07-'14 550-700, TBX & ALL TRV (EXCLUDES MUDPRO & DIESEL)

4-SEASON CLUTCH KIT



1436-614

'08-'17 PROWLER 700; '11-'17 700 HDX; '07-'16 550-700 FIS; '07-'17 TRV (INCLUDES ALTERRA TRV) & TBX (EXCLUDES XR, ALTERRA, MUDPRO & DIESEL)

1436-333

'09-'17 PROWLER 1000; '16-'17 1000 FIS; '06-'14 1000 FIS (EXCLUDING MUDPRO) & 1000 TRV

HEAVY-DUTY SEALED BATTERY

- Holds voltage longer than normal batteries
- Increased starting power from lead-calcium technology
- Requires only periodic charging
- 350 cold-cranking amps
- Leak-free, spill-proof design
- 8.25 in. L x 3.5 in. W x 6.5 in. H



1436-252

UNIVERSAL (EXCLUDES XR, ALTERRA & TRV); FITS MOWERS

SPRAYERS *

* BULKY ITEMS ARE NOT ON STOCK - PLEASE ASK FOR LEAD TIME

SPEEDRACK SPRAYER KIT

- Kit includes SpeedRack Rack-Mounted Sprayer (1436-605) and 120-in. Folding Boom (1436-606)



1436-680

1. SPEEDRACK RACK-MOUNTED SPRAYER

- Reliable 1.8-GPM SHURflo® pump with liquid-filled pressure gauge for accuracy. 18-gallon, low-profile contoured tank for a custom fit. Hand sprayer and 25-ft. hose included
- Built-in manifold system allows quick addition of the 120-in. Folding Boom
- Mounts on rear rack only
- 120-in. Folding Boom sold separately
- Spacer Kit (0436-854) recommended for '13-'16 500-550 Rear SpeedRack models
- Requires Tank Mounting Bracket (2436-291) for use with '15 XR and '16-'17 ALTERRA 550-700



1436-605

'08-'17 450-1000 REAR SPEEDRACK; '17 ALTERRA 550-700 & TRV (TRV REAR SEAT MUST BE REMOVED) (EXCLUDES ALTERRA 400 & 500); '16 ALTERRA 550-700 (EXCLUDES ALTERRA 400 & 450); '15 ALL XR

2. 120-IN. FOLDING BOOM

- Versatile, multiposition spraying ability
- Accurate and adjustable 120-in.-wide spray for complete coverage
- Turn on or off any combination of wand, left, center and right boom nozzle
- Spring-loaded folding booms spray when folded down, angled or in upright position
- Mounts in 2-in. rear receiver
- Sprayer sold separately

1436-606

2-IN. RECEIVER MOUNT FOR MODEL APPLICATIONS USED WITH SPEEDRACK SPRAYER (1436-605)

SPRAYER TANK BRACKET

- SpeedRack II-compatible for ease of installation
- Powder-coated steel construction for added durability and corrosion resistance
- Levels tank for optimum flow into sprayer
- Required for Alterra and XR models (excludes Alterra 400 and 450)



2436-291

WORKS WITH BOTH 1436-605 & 1436-607 SPRAYER KITS

ECONO SPRAYER

- Large 20-gallon capacity
- Spot sprayer with 0.9-GPM pump and built-in switch
- 15-ft. hose with lightweight wand for extended reach
- Universal fit requires two Ratchet Tie-Downs (7639-182 or 7639-183)



1436-607

'17 500, 1000, ALTERRA 550-700, TRV & TBX (EXCLUDES ALTERRA 400 & 500); '13-'16 500-1000; '15 500-700 XR; '16 500-700 ALTERRA (EXCLUDES ALTERRA 400 & 450), MUDPRO, TBX & TRV WITH OPTIONAL RACK (REAR MOUNT); '06-'16 450-1000, MUDPRO, TBX & TRV WITH OPTIONAL RACK (REAR MOUNT)

PACKAGES

WINDSHIELDS

HAND GUARDS

MIRRORS

BUMPER

PLOW

WINCH

BODY & FRAME

UNDERBODY

RACK

COVER

CARGO BAG

HUNTING

COLD-WEATHER
GEAR

TRV

TIGERTRAX

SPRAYER

CONTENTS

- 86 LIGHTING
- 89 STEREO
- 90 UNIVERSAL FITMENT
- 91 WHEEL & TIRE PACKAGES
- 91 WHEELS
- 93 TIRES
- 94 ACCESSORIES
- 96 BATTERY CHARGERS
- 98 OIL & CARE

UPGRADE TO AWESOME



FIREBAR 18 pg 90
ALUMINUM LIGHT SUPPORT pg 92



4-LED LIGHT KIT (1436-412) pg 92



LED ROCK LIGHT KITS pg 91



BLACK MAGIC WHEEL pg 95
MAXXIS BIGHORN 2.0 TIRE pg 98

UNIVERSAL

SPARE TIRE CARRIER pg 33
TRAIL PRO TIRE pg 91
12-IN. TURBO 10 ALUMINUM WHEEL pg 91

ROTOPAX FUEL CAN
& MOUNTING KIT pg 33

FIREBAR 36 pg 86

MX TEAM ARCTIC ZR HELMET pg 105

GOGGLES pg 106



LIGHTING *

* ITEMS ARE NOT E-MARKED. ONLY AVAILABLE ON REQUEST

FIREBAR LED LIGHT BARS *

- All Firebars use powerful 5-watt LEDs
- Combination spot and flood lenses provide superior distance and peripheral coverage
- Electronic thermal management
- 6061 aluminum bezel and housing
- IP-68 rating for superior performance in extreme conditions
- Custom Arctic Cat Wiring Harness with sealed connectors and backlit switch
- Flat-surface mounting hardware included
- Engineered by VisionX for quality and performance



FIREBAR 3 *

- 3 LEDs (1 spot, 2 flood)
- 4.5-in. housing length
- 1,479 lumen output



1436-856

UNIVERSAL FITMENT ON ALL WILDCAT, PROWLER, HDX & ATV MODELS

FIREBAR 9 *

- 9 LEDs (7 spot, 2 flood)
- 12-in. housing length
- 4,437 lumen output



1436-857

UNIVERSAL FITMENT ON ALL WILDCAT, PROWLER, HDX & ATV MODELS; '12 WILDCAT REQUIRES AN ACCESSORY EXTENSION HARNESS (1436-643)

FIREBAR 18 *

- 18 LEDs (14 spot, 4 flood)
- 23.5-in. housing length
- 8,874 lumen output



1436-858

UNIVERSAL FITMENT ON ALL WILDCAT, PROWLER, HDX & ATV MODELS; '12 WILDCAT REQUIRES AN ACCESSORY EXTENSION HARNESS (1436-643)

FIREBAR 27 *

- 27 LEDs (21 spot, 6 flood)
- 35-in. housing length
- 13,311 lumen output



1436-859

UNIVERSAL FITMENT ON ALL WILDCAT, PROWLER, HDX & ATV MODELS; '12 WILDCAT REQUIRES AN ACCESSORY EXTENSION HARNESS (1436-643)

FIREBAR 36 *

- 36 LEDs (28 spot, 8 flood)
- 20.5-in. housing length
- 17,748 lumen output



1436-860

UNIVERSAL FITMENT ON ALL WILDCAT, PROWLER, HDX & ATV MODELS; '12 WILDCAT REQUIRES AN ACCESSORY EXTENSION HARNESS (1436-643)

FIREBAR 54 *

- 54 LEDs (42 spot, 12 flood)
- 30-in. housing length
- 26,622 lumen output
- Not recommended for Prowler or HDX models



1436-861

UNIVERSAL FITMENT ON ALL WILDCAT & ATV MODELS; *12 WILDCAT REQUIRES AN ACCESSORY EXTENSION HARNESS (1436-643)

FIREBAR SOLO LED LIGHT *

- Single 10-watt LED
- 860 lumen output
- Aluminum bezel and housing
- IP-68 rating for extreme performance in all conditions
- Custom Arctic Cat Wiring Harness and switch included for easy installation
- Mounting hardware included
- 10° lens pattern is ideal for spot and directional lighting
- 40° lens pattern is ideal for work, backup and peripheral lighting



1436-866 10° LED SPOT

UNIVERSAL FITMENT ON ALL WILDCAT, PROWLER, HDX & ATV MODELS

1436-883 40° LED FLOOD

UNIVERSAL FITMENT ON ALL WILDCAT, PROWLER, HDX & ATV MODELS

4-POD LED ROCK LIGHT KITS *

- Four individual pods included in kit; controller accommodates up to eight single pods
- Rugged weatherproof housing for performance in all conditions
- Choose from various lighting patterns (on, scan, flashing, strobe or music)
- Wireless remote also controls all lighting patterns
- Long wire leads
- Versatile mounting kit included



1436-862 WHITE

UNIVERSAL FITMENT ON ALL WILDCAT, PROWLER, HDX & ATV MODELS



1436-864 GREEN

UNIVERSAL FITMENT ON ALL WILDCAT, PROWLER, HDX & ATV MODELS

ADDITIONAL LED ROCK LIGHTS *

- Add up to four additional pods to an LED Rock Light Kit (1436-862 or 1436-864)
- Colored lights are interchangeable



1436-863 WHITE

UNIVERSAL FITMENT ON ALL WILDCAT, PROWLER, HDX & ATV MODELS

1436-865 GREEN

UNIVERSAL FITMENT ON ALL WILDCAT, PROWLER, HDX & ATV MODELS

UNIVERSAL

LIGHTING

STEREO

UNIVERSAL
FITMENT

WHEEL &
TIRE PACKAGES

WHEELS

TIRES

ACCESSORIES

BATTERY
CHARGERS

OIL & CARE

4-LED LIGHT KIT *

- Four 3-watt LED bulbs for exceptional illumination
- Fully sealed, black powder-coated cast aluminum housing with clear high-impact lens
- Includes black 0.75-in. tube clamps and mounting bracket
- Fits TRV Limited, Cruiser and WindPro Windshields
- Fast Clamps (1436-619) may be used to mount to bumpers and canopy



1436-412

UNIVERSAL FITMENT ON ALL WILDCAT, PROWLER, HDX & ATV MODELS; ALSO FITS WINDPRO, CRUISER & STANDARD WINDSHIELDS

BRUSHGUARD 4-LED LIGHT MOUNT KIT

- Conveniently mounts on front brushguard of ATV to provide a lower-profile mount
- Ideal for any use, including plowing
- Black powder-coated finish complements the vehicle and other accessories
- Works with 4-LED Light Kit (1436-412), sold separately



1436-413

*10-'17 700-1000 ATVS WITH BRUSHGUARD BUMPER (EXCLUDES XR & ALTERRA)

ALUMINUM LIGHT SUPPORT

- Lightweight aluminum construction
- Installs easily to roof or ROPS tubing
- Fits Arctic Cat Firebar LED light bars up to 23.5 in.; also fits light bars with lateral mounts up to 22 in. long
- Firebar LED light bars require Firebar to Light Support Transition Brackets (1436-908)
- Firebar 18 (1436-858) sold separately
- NOTE: Use Anchor Block for Aluminum Light Support (2441-300) for extra mounting locations



1436-724 ALUMINUM

ALL WILDCAT MODELS



1436-909 BLACK

ALL WILDCAT MODELS

PROWLER ALUMINUM LIGHT SUPPORT

- Lightweight cast and extruded aluminum construction
- Installs easily to roof or ROPS tubing
- Fits Arctic Cat Firebar LED light bars up to 30.25 in.; also fits light bars with lateral mounts up to 28 in. long
- Firebar LED light bars require Firebar to Light Support Transition Brackets (1436-908)
- Firebar 54 not recommended for Prowler models
- Firebar 36 (1436-860) sold separately
- NOTE: Use Anchor Block for Aluminum Light Support (2441-300) for extra mounting locations



1436-699 ALUMINUM (SILVER)

ALL PROWLER & HDX MODELS



2436-182 BLACK

ALL PROWLER & HDX MODELS

PROWLER LIGHT SUPPORT 2-PIECE ROOF MOUNTING KIT

- Allows mounting of the Prowler Aluminum Light Support (1436-699 or 2436-182) to a Prowler 2-Piece Roof (1436-519)

1436-960

ANCHOR BLOCK FOR ALUMINUM LIGHT SUPPORT

- Adds extra mounting locations to your Aluminum Light Support (1436-699 or 2436-182)
- Sold individually



2441-300

FOR USE WITH ALUMINUM LIGHT SUPPORT

FIREBAR TO LIGHT SUPPORT TRANSITION BRACKETS

- Required brackets to transition Firebar mounts to the Aluminum Light Support (1436-699 or 2436-182)
- Fits all Firebar LED light bars
- Sold in pairs



1436-908

FIREBAR TUBE CLAMPS

- Fits all Firebar LED light bars
- Low-profile styling provides secure mounting
- Reducers included for multiple tube fitments
- Mounting hardware included
- Sold individually



1436-869 1 IN. – 1 1/4 IN.

UNIVERSAL FITMENT ON ALL WILDCAT, PROWLER, HDX & ATV MODELS

1436-871 1 1/2 IN. – 1 3/4 IN.

UNIVERSAL FITMENT ON ALL WILDCAT, PROWLER, HDX & ATV MODELS

FAST CLAMP

- Quick-release clamp for universal mounting of lights, GPS brackets, etc. to ROPS tubing
- Attaches to any 1 1/2-in. or 1 3/4-in. tube
- High-strength nylon construction with steel pins
- Sold individually



1436-619

UNIVERSAL FITMENT ON ALL WILDCAT, PROWLER, HDX & ATV MODELS

BLACK 3/4-IN. TUBE CLAMP

- Use to mount Firebar LED lights to 3/4-in. tubes or ATV racks, or as a universal clamp for other accessories
- Urethane-coated for scratch resistance
- Sold individually



1436-914

UNIVERSAL FITMENT ON ALL WILDCAT, PROWLER, HDX & ATV MODELS

STEREO

JENSEN RADIO

- U.S./Euro AM/FM tuner with RBDS
- SiriusXM® satellite radio-ready (SIRIUS satellite subscription and separate SXV200 tuner required)
- Features iPod® and iPhone® control and charging, plus MP3 use via front USB
- Full 7-channel NOAA weather band tuner with "Weather Alert"
- Low-battery alert
- 4-channel, 180-watt power amplifier (4 x 45 watts)



1436-836

UNIVERSAL

UNIVERSAL

LIGHTING

STEREO

UNIVERSAL
FITMENT

WHEEL &
TIRE PACKAGES

WHEELS

TIRES

ACCESSORIES

BATTERY
CHARGERS

OIL & CARE

RADIO ANTENNA

- Rubber gasket allows for a watertight seal
- Angle adjusts up to 90°



1436-106
UNIVERSAL

4-IN. JBL SPEAKERS (PAIR)

- 35-watt RMS handling power
- 105-watt maximum power



1436-666
FITS WILDCAT STEREO-READY HARD TOP (1436-753) FOR TWO OR FOUR SPEAKERS

200-WATT SUBWOOFER

- Slim-designed 8-in. IMPP woofer with built-in amplification and 12-volt DC power
- Black anodized aluminum enclosure with water-resistant housing (IPx5)
- Mate-in-Lock connectors for easy installation
- Adjustable gain and crossover and low level inputs
- Meets ASTM B117 UV, salt fog testing specifications



2436-202
UNIVERSAL (EACH)

UNIVERSAL FITMENT

ACCESSORY PLUG KIT

- Powers 12-volt DC accessories from a cigarette-lighter-style outlet
- 15-amp max.



0436-435
UNIVERSAL FITMENT ON ALL WILDCAT, PROWLER, HDX & ATV MODELS

ACCESSORY EXTENSION HARNESSES

- Used to extend any Style 21 accessory plug
- Allows you to add lights where you want them



1436-834 24-IN.
UNIVERSAL FITMENT ON ALL WILDCAT, PROWLER, HDX & ATV MODELS

1436-643 66-IN.
UNIVERSAL FITMENT ON ALL WILDCAT, PROWLER, HDX & ATV MODELS

ELECTRICAL PLUG

- Add 12-volt DC accessory plug (Style 21) to your vehicle
- Links power to trailered accessories with a 12-volt DC connection
- 12-in. plug-in link
- 15-amp max.



0436-087
UNIVERSAL FITMENT ON ALL WILDCAT, PROWLER, HDX & ATV MODELS

SWITCH

- Non-backlit on/off switch for additional accessories
- Fits into Wildcat, Wildcat Trail, Wildcat Sport and Prowler dash ports



1436-178
UNIVERSAL FITMENT ON ALL WILDCAT, PROWLER, HDX & ATV MODELS

SWITCH MOUNT PANEL KIT

- Includes switch panel and two plugs for installing added accessories
- Accommodates rectangular-style switches



1436-008
UNIVERSAL FITMENT ON ALL WILDCAT, PROWLER, HDX & ATV MODELS

ACCESSORY ADAPTERS

- Conveniently plugs into 12-volt accessory plug (Style 21)
- Powers multiple 12-volt accessories
- 15 amps max.



1639-623 2-OUTLET

UNIVERSAL FITMENT ON ALL WILDCAT, PROWLER, HDX & ATV MODELS

1639-624 3-OUTLET

UNIVERSAL FITMENT ON ALL WILDCAT, PROWLER, HDX & ATV MODELS

WHEEL & TIRE PACKAGES *

* NON HOMOLOGATED TIRES/WHEELS. ONLY AVAILABLE ON REQUEST

BLACK MAGIC® WHEEL & TIRE PACKAGE – COMPLETE SET *

- Increase traction and stability with Trailfinder™ tires mounted on 14-in. Black Magic wheels
- Directionally mounted tires for front and rear
- Aircat center caps
- Lug nuts included



1436-681 SET OF 4

'12-'17 WILDCAT X & WILDCAT 4X; '06-'17 PROWLER; '11-'17 HDX; '07-'17 700-1000 ATV MODELS

393/TRAILFINDER WHEEL & TIRE PACKAGE – COMPLETE SET *

- Increase traction and stability with Trailfinder tires mounted on 14-in. or 15-in. 393 wheels
- Directionally mounted tires for front and rear
- Lug nuts and center cap included



1436-786 14-IN. (SET OF 4)

'12-'17 WILDCAT X; WILDCAT 4X

1436-787 15-IN. (SET OF 4)

'12-'17 WILDCAT MODELS

WHEELS *

* NON HOMOLOGATED TIRES/WHEELS. ONLY AVAILABLE ON REQUEST

14-IN. BLACK MAGIC WHEEL *

- Exclusive Arctic Cat offsets for custom fit and performance
- Corrosion-resistant, rugged, lightweight aluminum construction
- Polished with black inlays for understated shine and finish
- Each wheel X-rayed to ensure quality
- Lug nuts included



1436-479 14X6.5 – FRONT

'12-'17 WILDCAT X & WILDCAT 4X; '06-'17 PROWLER & '11-'17 HDX; '07-'17 700-1000 ATVS – FRONT (14-IN.) REQUIRES 14-IN. TIRES

1436-480 14X8 – REAR

'12-'17 WILDCAT X & WILDCAT 4X; '06-'17 PROWLER & '11-'17 HDX; '07-'17 700-1000 ATVS – REAR (14-IN.) REQUIRES 14-IN. TIRES

12-IN. BLACK MAGIC WHEEL *



2436-194 12X6.0 – FRONT

'14-'17 WILDCAT TRAIL & SPORT MODELS; '13-'17 500-1000, XR, ALTERRA, MUDPRO, TRV & TBX; '02-'12 450-1000 (EXCLUDES XC 450) – FRONT; '13-'15 400 & 450; '08-'12 350, 366 & 425 – FRONT & REAR

2436-195 12X7.5 – REAR

'14-'17 WILDCAT TRAIL & SPORT MODELS; '13-'17 500-1000, XR, ALTERRA, MUDPRO, TRV & TBX; '02-'12 450-1000 (EXCLUDES XC 450) – REAR

LIGHTING

STEREO

UNIVERSAL
FITMENT

WHEEL &
TIRE PACKAGES

WHEELS

TIRES

ACCESSORIES

BATTERY
CHARGERS

OIL & CARE

12-IN. BLACK MAGIC MATTE WHEEL *



2436-196 12X6.0 – FRONT

'14-'17 WILDCAT TRAIL & SPORT MODELS; '13-'17 500-1000, XR, ALTEIRA, MUDPRO, TRV & TBX; '02-'12 450-1000 (EXCLUDES XC 450) – FRONT; '13-'15 400 & 450; '08-'12 350, 366 & 425 – FRONT & REAR

2436-197 12X7.5 – REAR

'14-'17 WILDCAT TRAIL / WILDCAT SPORT; '13-'17 500-1000, XR, ALTEIRA, MUDPRO, TRV & TBX; '02-'12 450-1000 (EXCLUDES XC 450) – REAR

393 WILDCAT WHEEL *

- 393 aluminum wheels widen vehicle 3–4 in.; know your local width/trail laws
- Center cap and lug nuts included
- Items 1436-490 and 1436-491 require 15-in. tires



1436-488 14X7 – FRONT

'12-'17 WILDCAT MODELS

1436-489 14X8 – REAR

'12-'17 WILDCAT MODELS

1436-490 15X7 – FRONT

'12-'17 WILDCAT MODELS

1436-491 15X8 – REAR

'12-'17 WILDCAT MODELS

15-IN. MIDNIGHT ICE WHEEL *

- Lightweight, corrosion-resistant aluminum
- Features a black finish with chrome torx accents and Arctic Cat center cap for maximum durability and visual impact
- Individually X-rayed for quality assurance
- Lug nuts not included
- Requires 15-in. tires



1436-918 15X6.5 – FRONT

'12-'17 WILDCAT MODELS

1436-919 15X8 – REAR

'12-'17 WILDCAT MODELS

14-IN. ITP T7 BEADLOCK WHEEL *

- Race-inspired for the true offroad enthusiast
- Aluminum wheels with outer beadlocking ring that holds tire bead to inner rim
- Matte black finish
- Lug nuts included



2436-198 14X6.5 – FRONT (BLACK)

'12-'17 WILDCAT MODELS

2436-199 14X8 – REAR (BLACK)

'12-'17 WILDCAT MODELS

12-IN. TURBO 10 ALUMINUM WHEEL *

- Exclusive Arctic Cat offsets for custom fit and performance
- Corrosion-resistant, rugged, lightweight aluminum construction
- Polished with black inlays for understated shine and finish
- Matte black finish
- Each wheel X-rayed to ensure quality
- Lug nuts included



2436-200 12X6.0 – FRONT

'14-'17 WILDCAT TRAIL & SPORT MODELS; '13-'17 500-1000, XR, ALTERRA, MUDPRO, TRV & TBX; '02-'12 450-1000 (EXCLUDES XC 450) – FRONT; '13-'15 400 & 450; '08-'12 350, 366 & 425 – FRONT & REAR

2436-201 12X7.5 – REAR

'14-'17 WILDCAT TRAIL & SPORT MODELS; '13-'17 500-1000, XR, ALTERRA, MUDPRO, TRV & TBX; '02-'12 450-1000 (EXCLUDES XC 450) – FRONT; '13-'15 400 & 450; '08-'12 350, 366 & 425 – FRONT & REAR

LUG NUTS

- M10 X 1.25-in. thread size and tapered base



2441-177 CHROME

LENGTH 1 1/2-IN. UNIVERSAL

- M10 X 1.25-in. thread size and tapered base



0423-556 CHROME

LENGTH 1 3/16-IN. UNIVERSAL

- M10 X 1.25-in. thread size and tapered base



0423-618 CHROME

LENGTH 1 1/16-IN. UNIVERSAL

- M10 X 1.25-in. thread size and tapered base



1423-260 MATTE BLACK

LENGTH 1 1/16-IN. UNIVERSAL

TIRES *

* NON HOMOLOGATED TIRES/WHEELS. ONLY AVAILABLE ON REQUEST

TRAIL PRO TIRE *

- Front tread pattern provides precise straight-line tracking and crisp steering response
- Unique, nondirectional rear tread pattern for optimized traction in a variety of conditions
- Durable 4-ply-rated shell provides lightweight puncture resistance and long tread life



2402-111 25X8XR12 – FRONT

'14-'17 WILDCAT TRAIL & SPORT; '13-'17 500-1000, XR, ALTERRA, MUDPRO, TRV & TBX; '02-'12 450-1000 (EXCLUDES XC 450) – FRONT; '13-'15 400 & 450; '08-'12 350, 366 & 425 – FRONT & REAR

2402-112 25X10XR12 – REAR

'14-'17 WILDCAT TRAIL & SPORT; '13-'17 500-1000, XR, ALTERRA, MUDPRO, TRV & TBX; '02-'12 450-1000 (EXCLUDES XC 450) – REAR

2402-223 26X9XR12 – FRONT

'14-'17 WILDCAT TRAIL & SPORT; '13-'17 500-1000, XR, ALTERRA, MUDPRO, TRV & TBX; '02-'12 450-1000 (EXCLUDES XC 450) – FRONT; '13-'15 400 & 450; '08-'12 350, 366 & 425 – FRONT & REAR

2402-224 26X11XR12 – REAR

'14-'17 WILDCAT TRAIL & SPORT; '13-'17 500-1000, XR, ALTERRA, MUDPRO, TRV & TBX; '02-'12 450-1000 (EXCLUDES XC 450) – REAR

BLACKWATER EVOLUTION™ TIRE *

- Innovative new nondirectional design for awesome traction
- 8-ply-rated radial construction for smooth riding and superb handling
- All-new "Tough Tread" rubber compound offers exceptional wear and abrasion resistance



2402-153 27X9XR14 – FRONT

'12-'17 WILDCAT MODELS

2402-154 27X11XR14 – REAR

'12-'17 WILDCAT MODELS

LIGHTING

STEREO

UNIVERSAL
FITMENT

WHEEL &
TIRE PACKAGES

WHEELS

TIRES

ACCESSORIES

BATTERY
CHARGERS

OIL & CARE

MAXXIS® BIGHORN 2.0 TIRE *

- Slimmer, lightweight radial design with increased shock absorption for a smooth ride
- Nondirectional radial pattern for optimal cornering and performance
- 26-in. tires are 6-ply and 27-in. tires are 4-ply



1402-935 26X9XR12 – FRONT

*15-'17 WILDCAT SPORT; 700-1000 ATV MODELS (EXCLUDES WILDCAT TRAIL)

1402-936 26X11XR12 – REAR

*15-'17 WILDCAT SPORT; 700-1000 ATV MODELS (EXCLUDES WILDCAT TRAIL)

1402-937 27X9XR14 – FRONT

*12-'17 WILDCAT X & 4X; PROWLER, HDX & ATV MODELS WITH 14-IN. WHEELS (EXCLUDES WILDCAT TRAIL)

1402-938 27X11XR14 – REAR

*12-'17 WILDCAT X & 4X; PROWLER, HDX & ATV MODELS WITH 14-IN. WHEELS (EXCLUDES WILDCAT TRAIL)

TRAILFINDER TIRE *

- Designed with flatter tread area to have more ground contact
- Radial tires are lightweight 6-ply construction



1436-751 26X10XR15 – FRONT

*12-'17 WILDCAT MODELS; (UNIVERSAL FITMENT WITH 15-IN. WHEELS)

1436-763 26X12XR15 – REAR

*12-'17 WILDCAT MODELS; (UNIVERSAL FITMENT WITH 15-IN. WHEELS)

1436-750 26X10XR14 – FRONT

UNIVERSAL FITMENT WITH 14-IN. WHEELS

1436-762 26X12XR14 – REAR

UNIVERSAL FITMENT WITH 14-IN. WHEELS

14-IN. EXTENDED-WEAR TIRE

- 26-in. x 9-in. R-14-in. Kenda® tire
- Specific radial design for ROV/ATV offroad applications
- Unique, extended-wear tread pattern for longevity
- Approved E Mark for European standards
- Choice of wheel sold separately



1402-633

*12-'17 WILDCAT MODELS; PROWLER, HDX & ATV MODELS WITH 14-IN. WHEELS (EXCLUDES WILDCAT TRAIL)

ACCESSORIES

RATCHET TIE-DOWNS

- Spring-loaded retainer clips prevent S-hooks from falling off
- Comfortable ratchet-handle grip
- Large grab handle for easy length adjustment
- 1.125 in. x 102 in., 1,200-lb. rating
- Sold in pairs



7639-183

DELUXE TIE-DOWNS

- Protects against scratching with integrated soft end loop
- Heavy-duty nylon straps with dual S-hook retainer clips
- 1.125 in. x 78 in., 1,200-lb. rating; sold in pairs



7639-182

STANDARD TIE-DOWNS

- Secures ATV to trailer with high-quality, durable, 69-in. nylon straps
- 1,000-lb. rating; sold in pairs



7639-181

COMBINATED PIN/BALL HITCH

Features rugged, rust-resistant, high-gloss, powder-coated finish. Hitch with 50mm ball and pin, require 4506-814 slide-in for installation (sold separately), for offroad use only.



AC008-150

HOMOLOGATED TOWING DEVICE

Features rugged, rust-resistant, high-gloss, powder-coated finish. Homologated hitch with 50mm ball and bracket for wiring, includes mounting material.



AC008-207 PROWLER

AC008-064 350 - 1000 FIS & TRV (EXCL. XR & ALTERRA, WILDCAT, DVX)

6-FT. WHIP FLAG

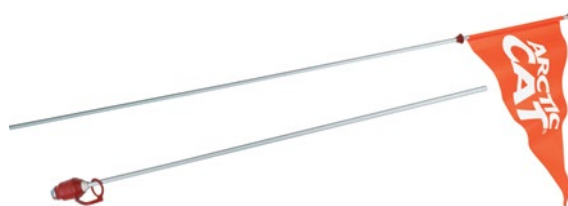
- 6-ft. flag is designed specifically for Side by Side vehicles
- Pop-off design includes tether cord to secure base
- 6-ft. flexible, one-piece shaft with flag alerts nearby riders
- Quick, single-bolt attachment



1436-875

8-FT. WHIP FLAG

- Pop-off design includes tether cord to secure base
- 8-ft., flexible, two-piece shaft with flag alerts nearby riders
- Quick, single-bolt attachment



0436-014

TOW STRAP WITH CLEVIS

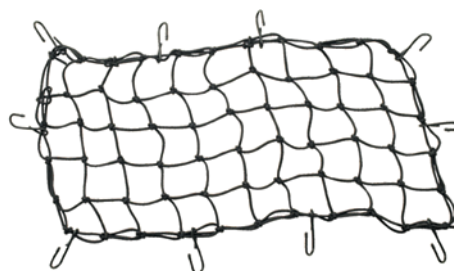
- 10,000-lb. tensile strength for durability
- Heavy-duty, 20-ft. tow strap with included storage bag
- Looped at ends with easy-attach, rust-resistant, zinc-plated shackles



0436-448

CARGO NET

- Versatile 15-in. x 30-in. net with coated steel hooks
- Secures cargo or other items to rack



0436-449

WATER BOTTLE/EXTINGUISHER HOLDER

- Neoprene holder holds your "Halon Style" extinguisher or water bottle in place with two Velcro straps
- Straps are lined with a rubber grip that prevents sliding, regardless of the terrain you encounter
- Neoprene casing cinches shut to keep your contents contained
- Fits securely on ROPS



1436-579

FITS ALL WILDCAT, PROWLER & HDX MODELS

LIGHTING

STEREO

UNIVERSAL
FITMENT

WHEEL &
TIRE PACKAGES

WHEELS

TIRES

ACCESSORIES

BATTERY
CHARGERS

OIL & CARE

GRAB HANDLES

- Convenient multiuse grab handles for ROPS
- Features nonslip grip connection
- Sold in pairs



1436-578
FITS ALL WILDCAT, PROWLER & HDX MODELS

UNIVERSAL PERSONAL DEVICE HOLDER

- Two-way radio holder also works great for cellphones, GPS systems, MP3 players and other personal electronic devices
- Fits and adjusts anywhere along ROPS
- Equipped with nonslip grip connection



1436-581
FITS ALL WILDCAT, PROWLER & HDX MODELS

BATTERY CHARGERS

CTEK BATTERY CHARGER & MAINTAINER

Features three modes: low-current mode for smaller 12V batteries used in ATVs and RVs. Higher-current mode for automotive or marine applications. Winter mode aimed at charging and maintenance in cold weather. Fully automatic for charging and maintenance. Takes its own readings and begins to charge. Once finished charging, it will switch to a maintenance phase. Features a patented method for reconditioning sulfated batteries. Spark-free, making connection safer and easier. Extends battery life. 12V, 3.3A., EU plug



AC003-399

ADDITIONAL BATTERY LEADS

- Comfort indicator leads feature a 3-LED battery condition indicator



5639-421 ALLIGATOR CLIPS



5639-484 STYLE 21 ADAPTER



5639-397 COMFORT INDICATOR – STYLE 21



5639-420 RING TERMINALS



5639-422 OUTLET



5639-485 COMFORT INDICATOR – RING TERMINALS



7639-191 COMFORT INDICATOR – DASH MOUNT (128-IN. LEADS)

SECOND BATTERY BOX KIT

- Runs in parallel with main battery to double your cranking amps
- Gives you two batteries to run multiple accessories
- Works with Heavy-Duty Sealed Battery (1436-691)



1436-651

'15-'17 500, 1000 & MUDPRO (EXCLUDES XR, ALTEERRA, TRV & MUDPRO 1000);
'13-'14 500-1000 & MUDPRO (EXCEPT MUDPRO 1000, TRV & TBX); '05-'12 450-1000 &
MUDPRO (EXCEPT XC 450, MUDPRO 1000, TRV & TBX)

1436-842

'11-'17 HDX (EXCLUDES 2015 HDX 500)

1436-810

'13-'17 WILDCAT 4

HEAVY-DUTY SEALED BATTERY

- Increased starting power from lead-calcium technology
- Leak-free, spillproof design
- 21-amp-hour-rated
- 350 cold-cranking amps
- 8.25 in. L x 3.5 in. W x 6.5 in. H



1436-252

UNIVERSAL (EXCLUDES XR, ALTEERRA & TRV); FITS MOWERS

HEAVY-DUTY SEALED BATTERY

- SLA factory activated, maintenance free and sealed battery. Ready to use; no acid handling, no dangerous goods
- 18 AH capacity / 270 cold-cranking-amps / 175 x 87x 155mm



AC003-421

500 - 1000 ALTEERRA / TRV
(IMAGE FOR ILLUSTRATION PURPOSE ONLY)

HEAVY-DUTY SEALED BATTERY

- Increased starting power from lead-calcium technology
- Leak-free, spillproof design
- 30-amp-hour-rated
- 385 cold-cranking amps
- 6.5 in. L x 5.17 in. W x 6.9 in. H
- Fits Second Battery Box (1436-651, 1436-810 and 1436-842)

1436-691

UNIVERSAL (EXCLUDES XR, ALTEERRA & TRV); FITS SECOND BATTERY BOX (1436-651)

UNIVERSAL

LIGHTING

STEREO

UNIVERSAL
FITMENT

WHEEL &
TIRE PACKAGES

WHEELS

TIRES

ACCESSORIES

BATTERY
CHARGERS

OIL & CARE

OIL & CARE

ACX 0W-40 SYNTHETIC OIL

- All-weather protection
- Advanced multigrade formula
- Improved cold-weather starting
- Superior rust and corrosion protection even during periods of nonuse
- Offers maximum engine performance along with unique shear-stable additive formula that protects against engine wear, carbon buildup and sludge formation
- 0W-40 is wet clutch certified for use in Arctic Cat wet-clutch engines
- Automotive engine oils DO NOT meet the requirements for use in Arctic Cat ATVs equipped with a wet clutch



1436-434 QUART

1436-435 GALLON

1436-436 16 GALLON

1436-437 55 GALLON

ACX 15W-50 SYNTHETIC OIL

- Arctic Cat's Full Synthetic 15W-50 is a heavier-viscosity formula of the original, proven Synthetic ACX 4-Cycle Oil. Formulated specifically for hot-weather use in Wildcat, Prowler and ATVs, it provides ultimate hot-temperature engine protection and prevents thermal breakdown in severe conditions. Can also be used in professional applications such as racing, construction, farm and ranch where the machine faces heavier loads and greater engine stress. NOTE: Not recommended for use in ambient temperatures below 32°F — heavier viscosity will make starting more difficult in extreme cold. Original Synthetic ACX (0W-40) engine oil recommended for all-season use.



1436-932 QUART

1436-933 GALLON

ACX 0W-40 SYNTHETIC OIL CHANGE KIT

- Everything you need to maintain your oil system: two quarts of ACX 0W-40 4-cycle oil, oil filter and disposable funnel



1436-438 TWO QUART

'12-'16 PROWLER XTZ; '11-'16 HDX; '09-'16 PROWLER XT & XTX; '12-'16 1000 H2; '09-'16 550 H1, 650 H1 & 700 H1; '17 MUDPRO 700 & 1000; '17 ALTEIRA 700; '17 TBX 700; '17 1000 XT

1436-439 TWO QUART

'04-'06 650 V-TWIN

ACX 0W-40 SYNTHETIC OIL CHANGE KIT

- The kit you need to properly service your ATV/ROV: one gallon of ACX 0W-40 4-cycle oil, oil filter and disposable funnel



1436-441 GALLON

'98-'05 250-300

1436-440 GALLON

'17 ALTEIRA TRV 550 & 700; '17 HDX 700; '12-'17 WILDCAT, WILDCAT X & WILDCAT 4X; '15-'17 WILDCAT TRAIL & SPORT; '09-'11 PROWLER XTZ; '06-'08 PROWLER XT & XTX; '17 PROWLER XT; '08-'11 1000 H2; '17 1000 H2; '06-'08 700 EFI; '05-'08 650 H1 & 700 H1; '96-'17 350-500

ACX 15W-50 SYNTHETIC OIL CHANGE KIT

- Everything you need to maintain your oil system: one gallon of ACX 15W-50 4-cycle oil, oil filter and disposable funnel



1436-934 GALLON

'12-'17 WILDCAT MODELS; '15-'17 WILDCAT TRAIL & SPORT; '09-'11 PROWLER XTZ; '06-'08 PROWLER, XT & XTX; '08-'11 1000 H2; '06-'08 700 EFI; '05-'08 650 H1 & 700 H1; '96-'16 350-500

4-CYCLE ENGINE OIL

- 4-cycle oil for use with wet-clutch systems
- Reduces component wear and maximizes transmission protection



0436-880 10W-40 QUART
0436-879 10W-40 GALLON
2639-103 10W-40 16 GALLON
0436-241 10W-40 55 GALLON

ATV 2-CYCLE INJECTION OIL

- Formulated for Arctic Cat ATV 2-cycle, air-cooled engines
- Exceeds industry standards
- Superior protection of engine parts



0436-884 QUART

80W-90 GEAR LUBE

- Extreme-pressure, temperature-stable lubricant for tough conditions
- Use in both front and rear differentials



0436-901 QUART
ALL MODELS (EXCLUDES XTX REAR DIFFERENTIAL)

80W-90 FRICTION-MODIFIED GEAR LUBE

- Designed for optimum engagement in limited-slip differentials
- High viscosity index
- Combats wear, oxidation, rust and corrosion



1436-159 9.3 OZ.
XTX (REAR DIFFERENTIAL)

SYNTHETIC TRANSAXLE FLUID

- Arctic Cat Synthetic Transaxle Fluid is a full-synthetic lubricant designed to provide complete lubrication and protection for Arctic Cat Wildcat transaxles
- Lighter-viscosity formula is more fluid at cold temperatures and remains stable at high temperatures
- Protects against wear, oxidation and corrosion
- Long-life formula resists shearing



2436-050 41 OZ.

HIGH-PERFORMANCE GREASE

- Provides superior stability at high temperatures
- Protects against rust and corrosion in severe operating environments



0436-905 14-OZ. TUBE

FOAM AIR FILTER OIL

- Convenient aerosol spray
- Maximizes airflow levels through the filter
- Protects engine from dirt and water particles



2436-341 12 OZ.

FOAM AIR FILTER CLEANER

- Cleans and preserves Arctic Cat ATV/ROV filtration systems
- Quick drying



0436-892 12 OZ.

LIGHTING

STEREO

UNIVERSAL
FITMENT

WHEEL &
TIRE PACKAGES

WHEELS

TIRES

ACCESSORIES

BATTERY
CHARGERS

OIL & CARE

DOT 4 BRAKE FLUID

- Premium fluid designed with corrosion and oxidation inhibitors
- Optimizes brake performance if moisture is introduced into the brake system



5639-848 12 OZ.

FUEL STABILIZER

- Slows oxidation to prevent gum and varnish buildup
- Helps engine start easily after long periods of storage



0436-907 8 OZ.

ARCTIC CAT ANTIFREEZE – 60/40 EXTENDED LIFE

- Protects against freezing to -62°F
- Extended Life has 2.5-year service life



6639-916 GALLON

ENGINE STORAGE PRESERVER

- 2-cycle formula protects internal engine parts during periods of nonuse
- Aids in corrosion prevention



0436-888 12 OZ.

FUEL INJECTOR & CARBURETOR CLEANER

- Removes deposits from carburetors, fuel injectors, intake manifolds, intake valves and parts



0436-904 12 OZ.

CHAIN LUBRICANT

- Minimizes dirt buildup



2436-323 12 OZ.

FUEL DE-ICER

- Prevents system failure at the coldest of temps
- Safe on internal parts
- Water-absorbing isopropyl blend



0436-906 12 OZ.

INSTANT DETAILER

- Polishes and protects
- Showroom-quality shine
- Resists finger markings
- Greaseless finish



5639-849 16 OZ.

SPRAY & RINSE CLEANER

- Scrub-free cleanser eliminates grease, dirt and bugs



5639-872 24 OZ.

5639-789 GALLON

OIL FILTERS

- Premium replacement oil filters
- Exclusively designed for Arctic Cat ATVs/ROVs



3201-451

'04-'06 650 V2

0812-034

'96-'17 366-1000 (EXCLUDES DIESEL, DVX & 650 V2)

3436-005

'98-'05 250 & 300

3470-008

'04-'08 400 DVX

3206-194

'07-'15 700 DIESEL

GRIP-IT GLUE

- Specially formulated for applying grips to recreational vehicles
- Bonds up to 12 sets of grips



0441-510 1 OZ.

LIGHTING

STEREO

UNIVERSAL
FITMENT

WHEEL &
TIRE PACKAGES

WHEELS

TIRES

ACCESSORIES

BATTERY
CHARGERS

OIL & CARE

CONTENTS

104	PROCAT RIDING GEAR
105	HELMETS
106	GOGGLES
106	PROTECTIVE GEAR
107	LEATHER JACKETS
107	GEAR BAGS
109	CAPS
110	COLLECTIBLES

THE SOUL OF A CONQUEROR.
THE STYLE OF ONE COOL CAT.



RIDEGEAR & SPORTSWEAR

WINDGUARD 2 WINDSHIELD pg 70

FREESTYLE VEST pg 106

CARBON CAT PRO HELMET pg 105
ADULT GOGGLES pg 106

3-IN. RACK EXTENSION pg 73

3,000-LB. PROVANTAGE WINCH KIT pg 69

FRONT BRUSHGUARD BUMPER pg 62 CENTER BAG — FRONT pg 76

CROSSOVER VEST pg 107

6-IN. RACK EXTENSION pg 73



PRO CAT RIDING GEAR

PROCAT ADVENTURE-JACKET AND PANTS

This all year around, state of the art Arctic Cat riders outfit offers an active Air-Vent System along with an integrated breathable-waterproof climate membrane. To point out: outer-shell with numerous pockets; special impregnation; strong – non scraping; hardly any water-intake; tear resistant; reinforced seams; EU certified protectors for passive protection. Numerous possibilities to adjust the fit, as well as a leisure pattern/shape/cut is standard for this "ProCat Riding Gear".

MATERIAL

OUTER-SHELL: 500D Polyamide and polyester fabric (100% Polyester),
LINER - Permanent Mesh, 100% Polyester

PROTECTION

CE Approved shoulder, elbow and knee protectors, EVA foam back protector, reflectors on back of jacket and rear of pants.

COMFORT

Arms, hips, waist and legs to be size-adjusted

JACKET: Removable fleece jacket (100% Polyester), removeable membrane-vest.

PANT: Removable 3-Layer-Liner Pant

Tight fit - consider to order one size larger



PROCAT ADVENTURE JACKET

The 3-in-1 concept offers the exceptionally high benefit of this ProCat Gear. The integrated, removable fleece jacket as well as the quilted vest with the same features, together add up to this 3-in-1 concept. Reflectors; connecting zipper to Adventure-Pants; Soft, skin-protection collar; adjustable arms & waist; air ventilation shoulder & back green colour; 2 side pockets, 2 chest pockets, 1 pocket on back.

Tight fit - consider to order one size larger



AC001-283 S; AC001-284 M; AC001-285 L;
AC001-286 XL; AC001-287 2XL; AC001-288 3XL

PROCAT ADVENTURE PANTS

Easy get in/out provided by zippers at pants-ends. Zipper connection to Adventure-Jacket and additionally compatible with Team Cat and Wildcat leather jackets. Arctic Cat reflectors on both leg-ends; removable thermo-liner-pants; non-sliding-coated bottom; stretch inlays on knees; air ventilation; 2 side pockets; additional pockets for hip protectors prepared.

Tight fit - consider to order one size larger



AC001-404 S; AC001-405 M; AC001-406 L;
AC001-407 XL; AC001-408 2XL; AC001-409 3XL

PRO CAT LEATHER GLOVE

20 The elastic material and the pre-formed palm guarantee comfort and perfect fitting. Additional strengthened leather in exposed areas. TPU knuckle and finger protection - added safety. Luftex "Vent in/out" air textured yarns. Adjustable Neoprene cuffs.



AC001-266 S; AC001-267 M; AC001-268 L;
AC001-269 XL; AC001-270 2XL

HELMETS *

* HELMET COMES WITH HELMET-BAG - SEE NEXT PAGE

TEAM CAT REPLICA - MX HELMET *

2 sizes external shell full Carbon fiber high rigidity; Anatomical structure with the exclusive "N.B.F.F." system (Neck Brace Front Fit); Removable and washable inner lining, highly breathable fabrics and hygienically treated; Removable cheek pads with the "J.I.E.R." (JUST 1 Emergency Remove); Inside chin guard with air vents; Protective internal polystyrene foam shell with air channels; Multiple air vents with anti-intrusion aluminum nets; Multiple top and rear air extractors; Adjustable peak with air vents; Double-D retention system; Weight from 1050 gr +/- 50 gr; Homologated ECE 22/05.



AC001-329 S
AC001-330 M
AC001-331 L
AC001-332 XL
AC001-333 2XL

CARBON CAT PRO - MX HELMET *

2 sizes external shell full Carbon fiber high rigidity; Anatomical structure with the exclusive N.B.F.F." system (Neck Brace Front Fit); Removable and washable inner lining, highly breathable fabrics and hygienically treated; Removable cheek pads with the "J.I.E.R." (JUST 1 Emergency Remove); Inside chin guard with air vents; Protective internal polystyrene foam shell with air channels; Multiple air vents with anti-intrusion aluminum nets; Multiple top and rear air extractors; Adjustable peak with air vents; Double-D retention system; Weight from 1050 gr +/- 50 gr; Homologated ECE 22/05.



AC001-323 S
AC001-324 M
AC001-325 L
AC001-326 XL
AC001-327 2XL

PRO CAT - BLUETOOTH HELMET *

On-Road helmet with a less pronounced chin-guard, but still characterized by an aerodynamic line, equipped with integrated Bluetooth communication system BLiNCTM G2; sizes external shell, removable and washable inner lining, highly breathable materials and hygienically treated; Multiple rear air extractors; thermoplastic resin shell, Micro-metric lock; UV laquer finishing; removable Cheek Pads; wide-angle adjustable peak. Weight from 1600 gr +/- 50 gr; Homologated ECE 22/05.

Bluetooth BLiNCTM G2 Features:

- Lithium battery with charger
- 150 hours of standby
- Stereo Speaker Integrated
- Pairing in few seconds to cellphone, MP3 and GPS system
- one single button to answer, reject or re-dial a call
- Intercom between rider and passenger



AC001-317 S
AC001-318 M
AC001-319 L
AC001-320 XL

PROCAT RIDING
GEAR

HELMETS

GOOGLES

PROTECTION

LEATHER
JACKETS

GEAR BAGS

CAPS

COLLECTIBLES



CROSS CAT - MX HELMET *

Removable and washable inner lining, UV coating, highly breathable fabrics and hygienically treated; Multiple top and rear air extractors; Adjustable peak with air vents; Micrometric retention system; Weight from 1260 gr +/- 50 gr; Homologated ECE 22/05



BLACK

AC001-335 S; AC001-336 M; AC001-337 L;
AC001-338 XL; AC001-339 2XL

WHITE

AC001-341 S; AC001-342 M; AC001-343 L;
AC001-344 XL; AC001-345 2XL

* HELMET BACK BAG

Comes with all Arctic Cat Helmet



PRO CAT - BLUETOOTH VISOR

Replacement visors for Pro Cat Helmet. Use the heated visor for cold winter days.



AC001-570 HEATED VISOR; TRANSPARENT

AC001-585 TRANSPARENT

AC001-586 LIGHT SMOKE

GOGGLES

ADULT

- Lends maximum eye protection from impact-resistant GE Lexan® lenses
- V-nose, foam surround and silicone-treated strap provide a snug yet comfortable fit



5258-040

4978-220 REPLACEMENT LENS - CLEAR

YOUTH



5252-489

PROTECTION

FREESTYLE VEST

- Lightweight vest with front zipper access
- Non-vented for excellent mid-layer insulating performance
- Closed-cell foam and UHMW plastic laminate armor provide all-around coverage
- Not recommended for racing



5262-92* | -951 XS | -950 2XS

XS-XL

2XL-3XL

2XS

CROSSOVER VEST

- The lightest TekVest® available
- Heavily vented for maximum cooling
- Rear panel designed to increase airflow when wearing a backpack
- Not recommended for racing



5262-91* | -910 XS

XS-XL

2XL-3XL

LEATHER JACKET

LEATHER JACKET “VINTAGE CAT”

In style, comfortable and soft cow-leather jacket with retro/vintage Design. Great to wear with jeans as a sporty or business look. High quality Arctic Cat embossments; Arctic Cat buttons; Adjustable waist and arms; Arctic Cat buttons; Two outer pockets with zippers; one big liner-pocket with zipper, one mobile-phone liner-pocket; Tight fit - consider to order one size larger



AC001-493 M

AC001-494 L

AC001-495 XL

AC001-496 2XL

LEATHER JACKET “TEAM CAT”

Innovative, sportive ATV rider jacket made of durable cow leather - great action freedom. Solid cow leather with integrated, removeable CE-approved protectors to guarantee a combination of security and wearing-comfort. The built-in AirVent system offers a perfect feeling on hot summer days. Sportive, dynamic styling combined. This jacket is produced in high workmanship to last. Adjustable waist and arms. 2 outer pockets with zippers, one big liner-pocket with zipper, one mobile-phone liner-pocket; Tight fit - consider to order one size larger



AC001-468 S

AC001-469 M

AC001-470 L

AC001-471 XL

AC001-472 2XL

AC001-473 3XL

GEAR BAGS

ARCTIC CAT LARGE ROLLER

- Large center storage area for all your gear
- EVA molded goggle/personal items pocket
- Rolls smoothly and quietly on polyurethane wheels
- ABS molded tub withstands abuse and protects gear from the elements
- Two-stage telescoping pull handle
- 6,550 cu. in., 8.5 lbs., 30 in. x 17 in. x 16.5 in.



5262-901

PROCAT RIDING
GEAR

HELMETS

GOOGLES

PROTECTION

LEATHER
JACKETS

GEAR BAGS

CAPS

COLLECTIBLES

ARCTIC CAT SMALL ROLLER

- Interior zippered pocket
- Clothing compression straps
- Transparent load divider
- 2-in. expansion gusset
- Polyethylene molded tub
- Carry-on legal
- 3,000 cu. in. (expanded), 6.4 lbs., 21 in. x 14 in. x 9 in. (11 in.)



5262-902

ARCTIC CAT DUFFLE

- High-tensile strength/lightweight endurance fabrics
- Large main compartment with zippered side pockets
- Front-zippered pocket and water bottle pocket
- Ventilated mesh shoe compartment
- Adjustable pack-style shoulder straps with integrated carry handle
- 2,875 cu. in., 2.8 lbs., 25 in. x 11 in. x 11 in.



5262-903

TRIBUNE BACKPACK

- Large main compartment
- Padded interior laptop compartment fits most 17-in. laptops
- Padded tablet sleeve
- Zippered, fleece-lined top valuables pocket
- Dual side water bottle holders
- Adjustable shoulder straps with sternum strap
- 2,450 cu. in., 2 lbs., 19.5 in. x 13.5 in. x 9 in.



5262-904

GAMBIT BACKPACK

- Large main front compartment
- Open front compartment with padded tablet sleeve
- Zippered, crush-proof valuables pocket
- Multiple zippered pockets for gadgets and belongings
- Ergonomic padded straps with zippered pocket and adjustable sternum strap
- Ultra-padded mesh back with Air Flow System
- Laptop sleeve: 15.5 in. x 11 in. x 1 in. fits most 17-in. laptops
- 2,000 cu. in., 3.5 lbs., 19.5 in. x 15 in. x 10.5 in.



5262-905

ATS HELMET BAG

- Molded EVA/PE protective shells
- Adjustable padding thickness accommodates multiple helmet types
- Compressed foam holds helmets still within the case
- Adjustable goggle or visor storage holds up to four pairs of goggles
- 2.5 lbs., 16.75 in. x 11.25 in. x 13.5 in.



5262-906

TOOL PACK

- Keep your tools or spares organized and packed away
- Front flip-down tool organizer pouch
- Adjustable waist strap
- 1.4 lbs., 4 in. H x 26 in. W x 6 in. D



5242-905

HYDRATION PACK

- Stay hydrated with this light, comfortable pack
- Large main compartment with a separate hydration pocket
- Adjustable padded shoulder strap with sternum strap
- Includes 2-liter reservoir system
- 1 lb., 8 in. H x 9 in. W x 18 in. D



6639-446

CAPS

AIRCAT CAP

- Arctic Cat embroidery
- Snapback



AC001-595 BLACK

WILDCAT RACING LIME

- 100% polyester
- Moisture-wicking performance fabric
- Arctic Cat embroidery
- Laser-cut detailing on brim
- Structured
- Fitted



5268-319

S/M

5268-320

L/XL

ARCTIC CAT FLAT BRIM SNAPBACK

- 65% cotton, 35% polyester
- Arctic Cat sonic weld logo
- Mesh back
- Snapback



5273-066

PROCAT RIDING
GEAR

HELMETS

GOOGLES

PROTECTION

LEATHER
JACKETS

GEAR BAGS

CAPS

COLLECTIBLES



AIRCAT CAMO

- 100% cotton
- Contrast piping, embroidery on crown/brim
- Structured fit
- Velcro



5273-047 LIME

AIRCAT GRAY PERFORMANCE

- 97% polyester, 3% elastane
- Sonic weld rubber logo appliqué
- Fitted, structured fit



5273-054

S/M

5273-055

L/XL

COLLECTIBLES

AIRCAT CAT MUG

- 100% ceramic
- Matte finish outside, glossy inside



5273-024 BLACK

5273-025 LIME

ARCTIC CAT TUMBLER

- 100% stainless steel lined



5273-027 LIME

5273-028 BLACK

ARCTIC CAT WATER BOTTLE

- 100% plastic
- Two-top bottle: Unscrew at top for small-mouth opening or at middle for wide-mouth opening



5273-029 LIME

5273-030 ORANGE

5273-031 GLACIER

TEAM ARCTIC BOTTLE CAP KEYCHAIN

- 100% metal



5273-032

TEAM ARCTIC LANYARD



AC009-183 LIME

AC009-185 BLACK

TEAM ARCTIC WRISTBAND



AC009-188 Black
AC009-187 Lime

ARCTIC CAT PIN EMBLEM

• 16x17MM



AC009-161

TEAM ARCTIC USB STICK

• 4 GB



AC009-165

TEAM ARCTIC FOLDER

- 100% felt with Arctic Cat print
- DIN A4



AC009-399

ARCTIC CAT MOUSEPAD



AC009-180

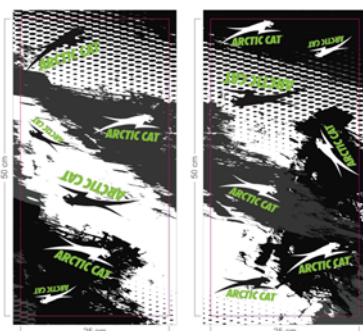
ARCTIC CAT I-PAD & DOCUMENT BAG

- Neoprene
- 22x26,5x2cm



AC009-163

ARCTIC CAT BANDANA



AC001-108

ARCTIC CAT BLACK

- 100% plastic polycarbonate lens
- UVA/UVB



5273-001

PROCAT RIDING
GEAR

HELMETS

GOOGLES

PROTECTION

LEATHER
JACKETS

GEAR BAGS

CAPS

COLLECTIBLES

Call or visit your
local Arctic Cat dealer
for more information.

For a dealer near you,
visit arcticcat.eu.

YOUR ARCTIC CAT DEALER:



ARCTIC CAT GmbH - Industriestraße 43 - A-5600 St. Johann/Pg. - Austria
ARCTIC CAT Deutschland GmbH - Münchener Straße 67 - 83395 Freilassing - Germany
ARCTIC CAT UK Ltd - Industriestraße 43 - A-5600 St. Johann/Pg. - Austria
ARCTIC CAT France SARL - 1434 Rue Aristide Bergès - ZI Centr'Alp - 38430 Moirans - France
ARCTIC CAT Italia SRLU - Via Galileo Galilei 2/A - 39100 Bolzano (BZ) - Italy


ARCTIC CAT
www.arcticcat.eu



AC009-397